

Plastic model kit containing 344 parts.

Wing span: 648mm Length: 443mm

1/48
SCALE



01F007

Avro Lancaster Grand Slam

History of the Avro Lancaster



From failure to success. The four-engine Avro type 683 Lancaster was developed from the disappointing twin-engine Manchester, which suffered from engine fires caused by its unreliable Rolls Royce Vulture engine-installation.

However, the basic Manchester airframe was of sound design. A logical solution was to increase the wingspan and replace the two Vultures with four Merlin engines. The engine-installation originally developed by Rolls-Royce for the Beaufighter II, was quickly adapted and fitted in graceful underslung nacelles. The prototype BT308 made its first flight on January 9th, 1941 and it soon proved to be an excellent aircraft with good handling and high load capability. Initially designated Manchester III, it was soon renamed Lancaster. The general outline of the Lancaster remained the same throughout production, apart from the MK II which used Bristol Hercules radial engines, in case a shortage of the Merlin should arise. The Mk I and III were similar, differing only in the type of

Merlin engine fitted. In the case of the Mk III, the Packard built Merlin 28 was utilised. The Lancaster began to equip bomber squadrons in early 1942, where it quickly became the backbone of RAF Bomber Command.

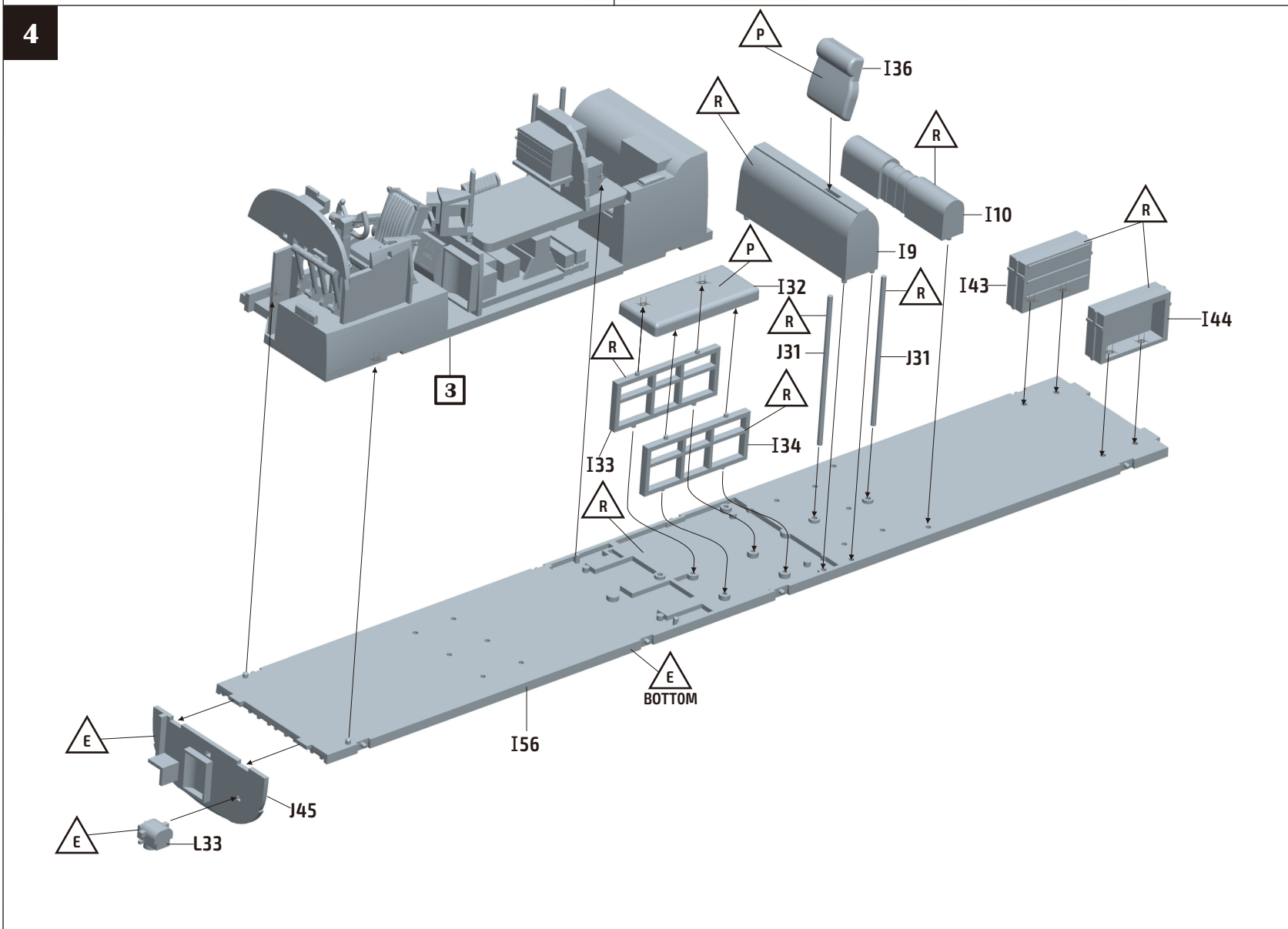
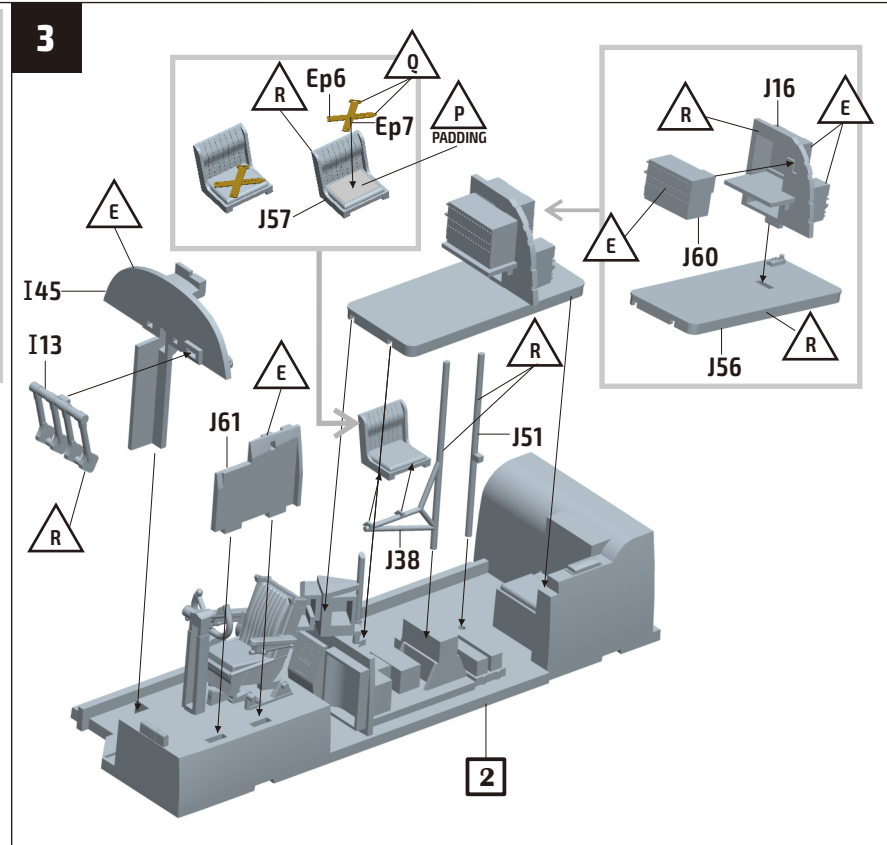
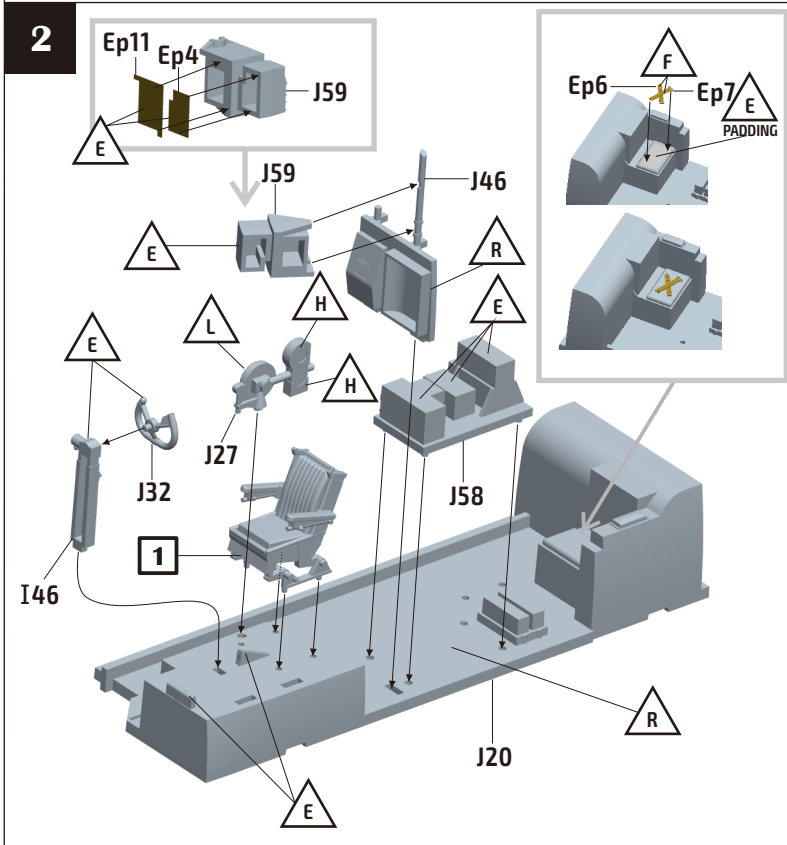
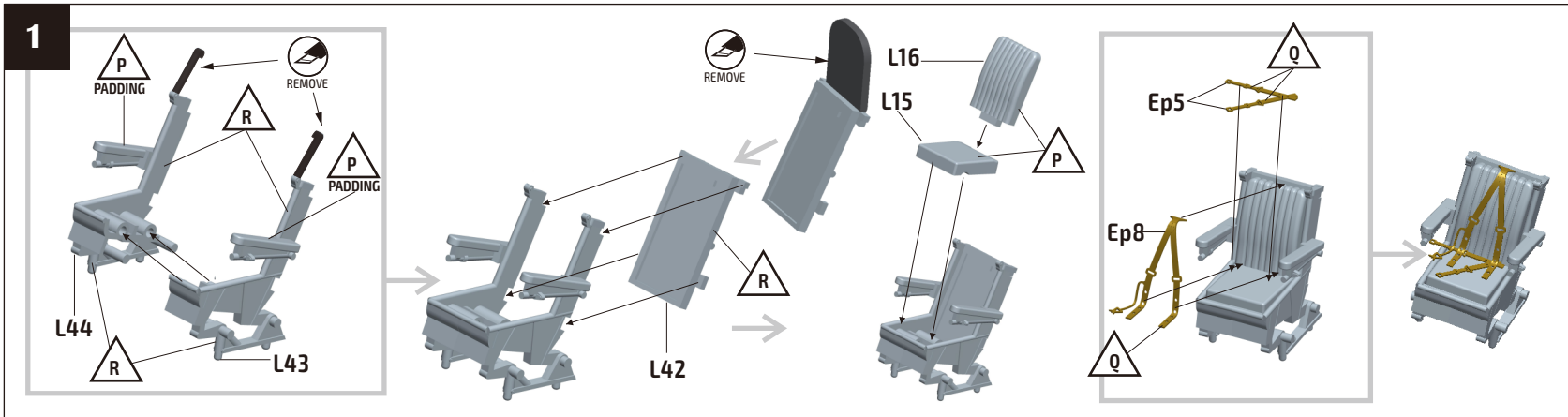
The type was used in many famous raids, such as on the M.A.N. factory in Augsburg, the spectacular Dambusters Raid on the Ruhr Valley dams, and sinking the "Tirpitz" to name but a few. It became famous for its use in high accuracy bombing operations by 617 squadron. Its 33-foot-long bomb bay enabled it to carry high loads as well as the spinning "Upkeep" mine used to break the Ruhr dams. Specially adapted aircraft could carry the massive 12.000 lb "Tallboy" and 22.000 lb "Grand Slam" earthquake bombs.

At the end of the war it was also used for food dropping sorties for the starving Dutch population and transporting the many prisoners of war back home from Germany. Postwar Lancasters were used for testing jet engines and in-flight refueling system. As a bomber it was gradually replaced, but it found a useful role in Coastal Command until the last one was withdrawn in October 1956. The RCAF and French l'Aéronavale, however, continued to use the Lancaster until the mid-sixties. A total of 7,377 Lancasters were built in the UK and Canada.

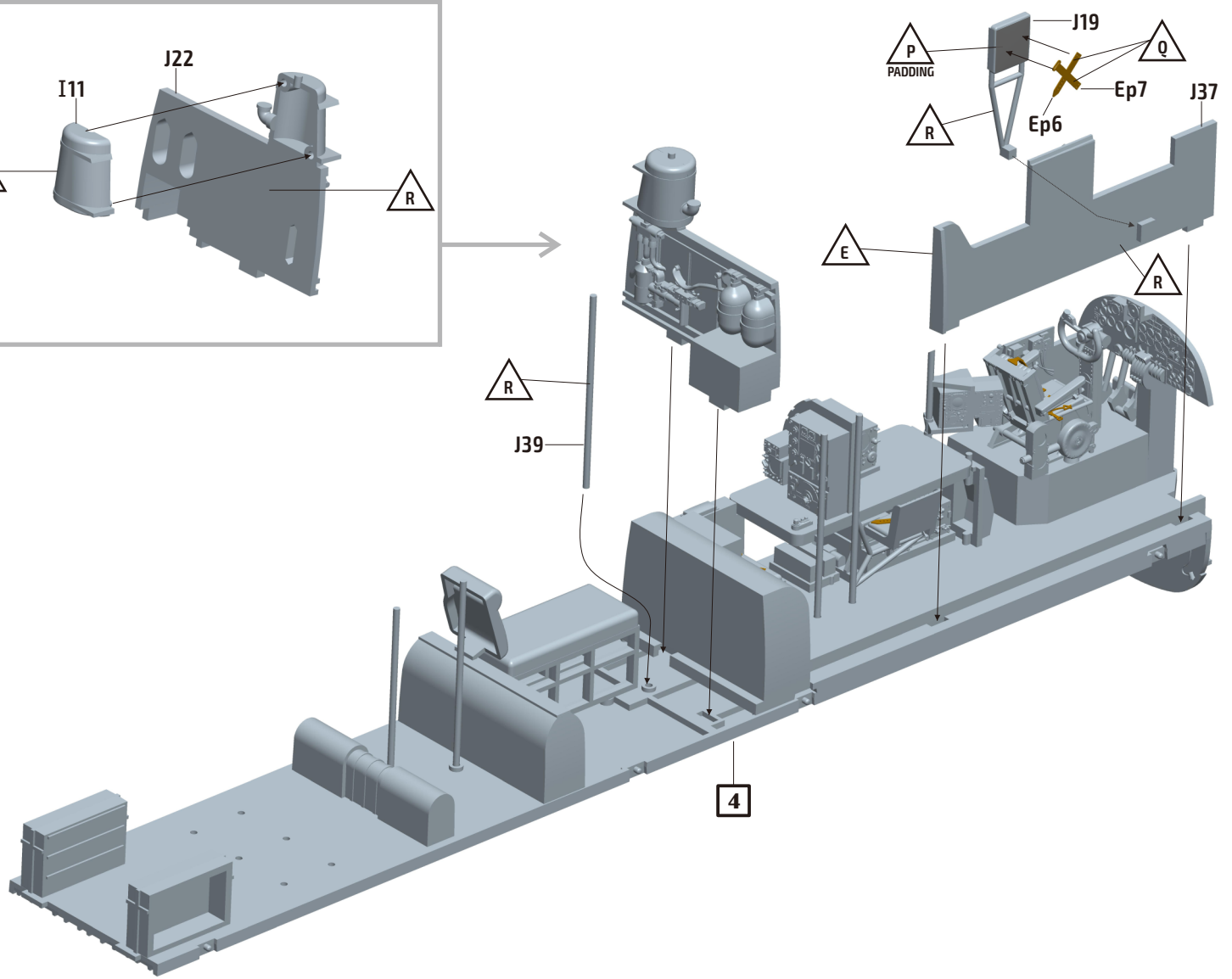
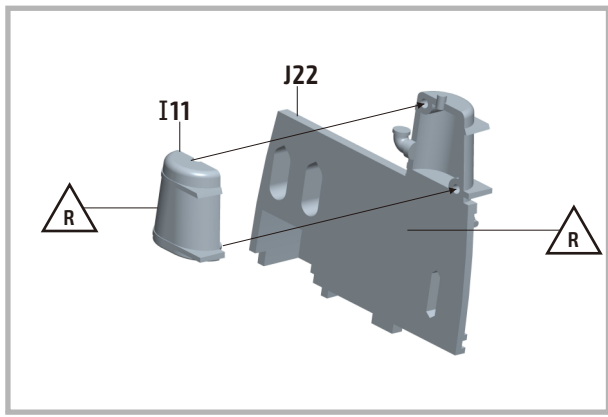
-  BE CAREFUL
-  REMOVE
-  GLUE TOGETHER
-  PLEASE WAIT FOR A FEW MINUTES UNTIL DRY
-  MAKE 2 PIECES
-  DRILL HOLE
-  DO NOT GLUE
-  INSTANT GLUE FOR METAL
-  BEND
-  FILL HOLE
-  SEQUENCE OF WORK
-  OPTIONAL
-  USED COLOUR
-  APPLY DECAL
-  MARKING OPTION

CAUTION
 When using both glue and paint, do not use these near an open flame, due to the flammable properties of these items.
 The symbols provided, such as 'X', refer to the basic colours of parts, although a more comprehensive list is supplied for your use for Tamiya, Mr Hobby and AK-Interactive codes.
 When removing parts from sprues, take extreme care. Consider correct tools such as Xuron Sprue Cutters
 Please check the symbology on the left and familiarise yourself before building this model kit.

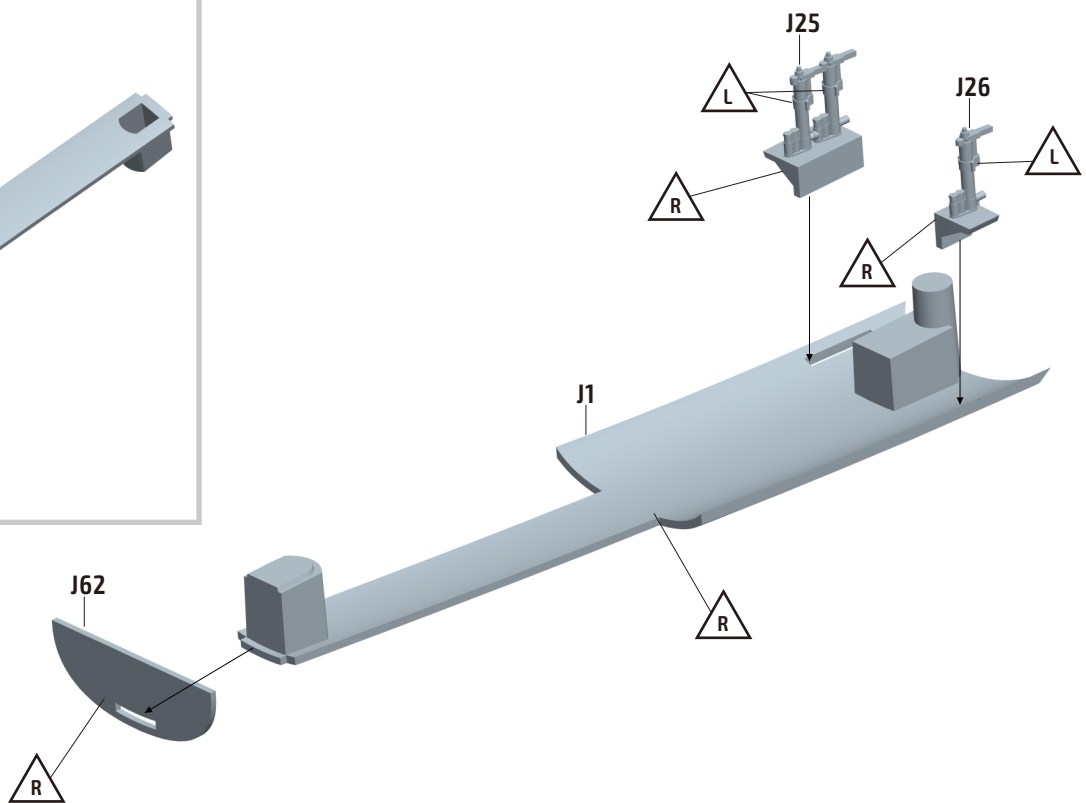
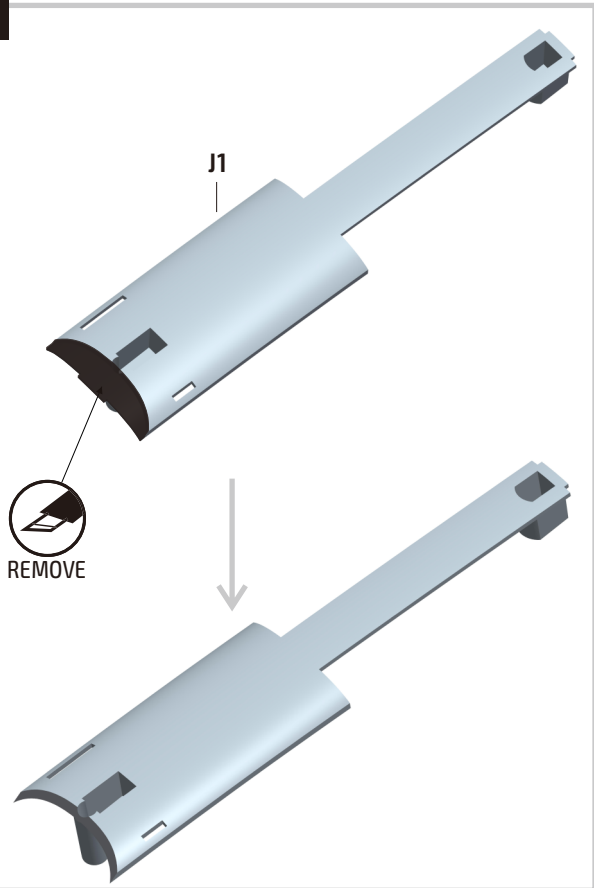
In cooperation with: 
www.ak-interactive.com



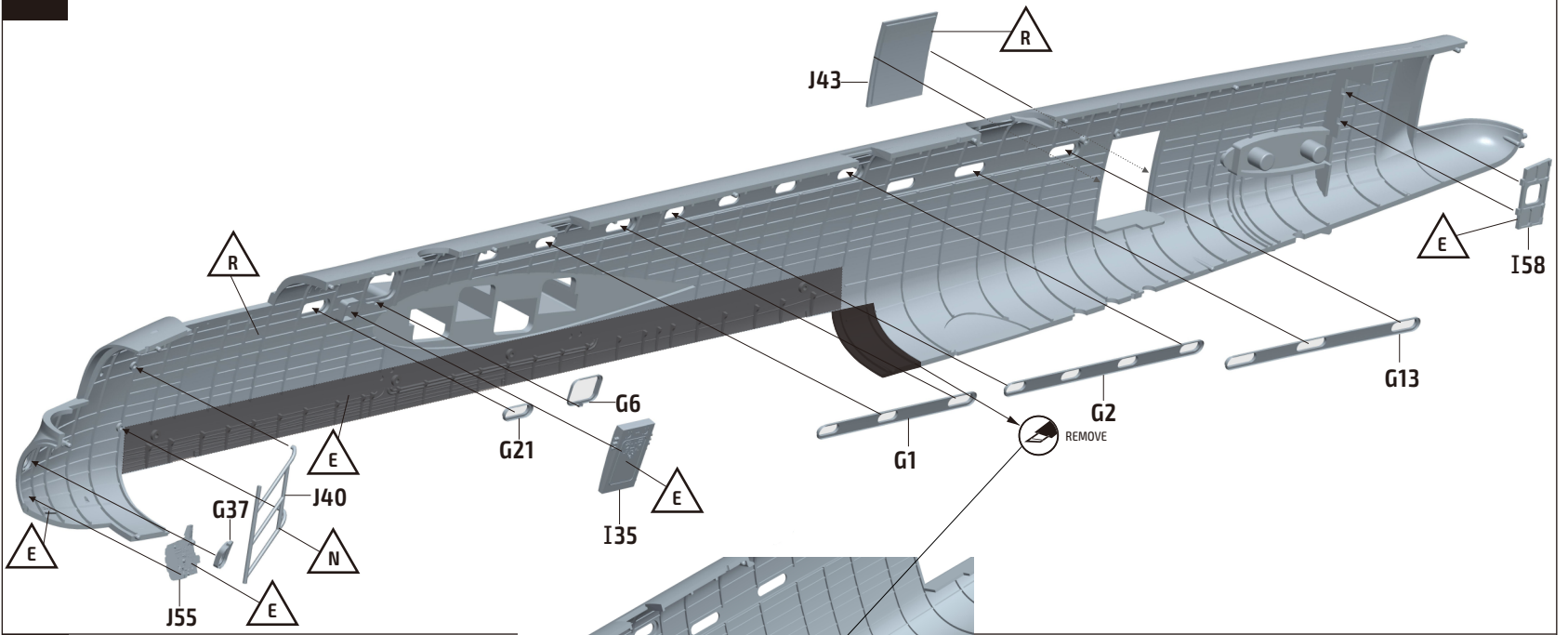
5



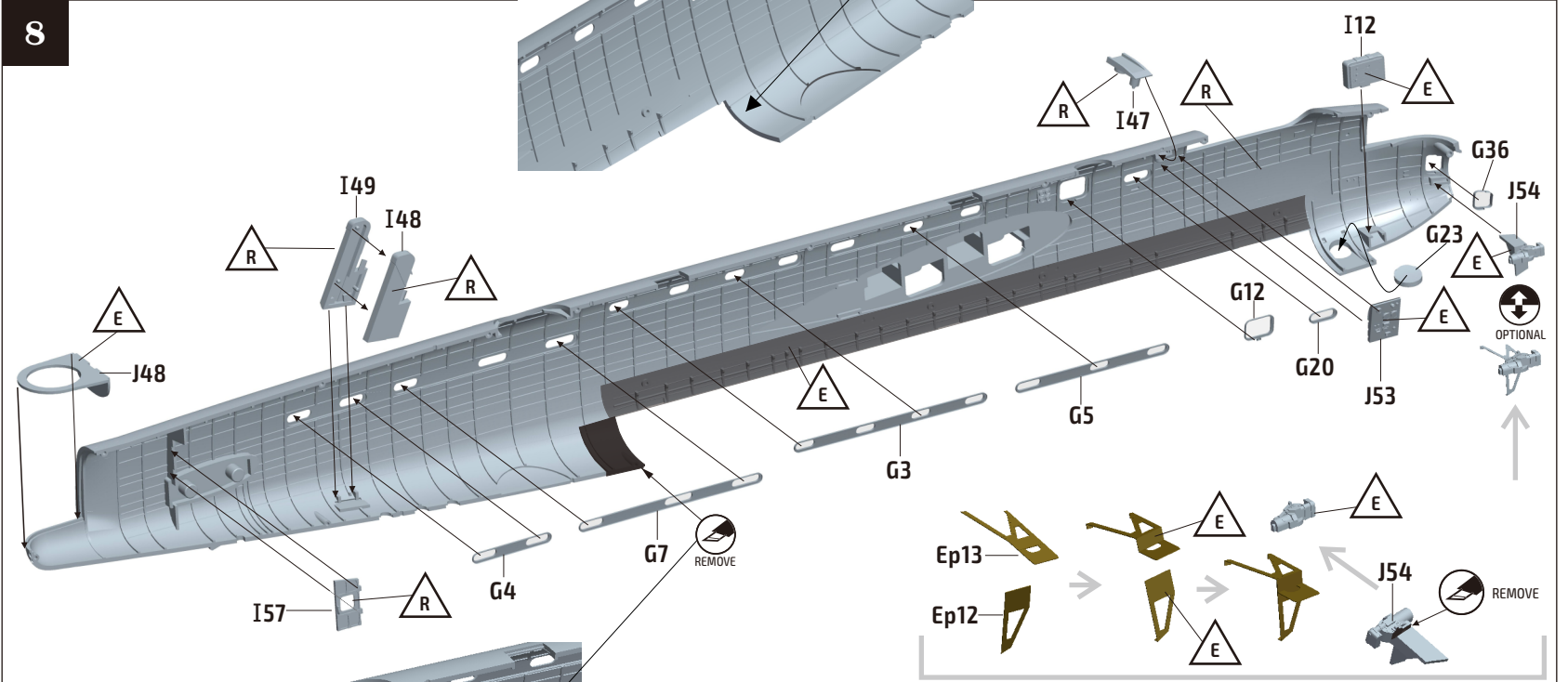
6



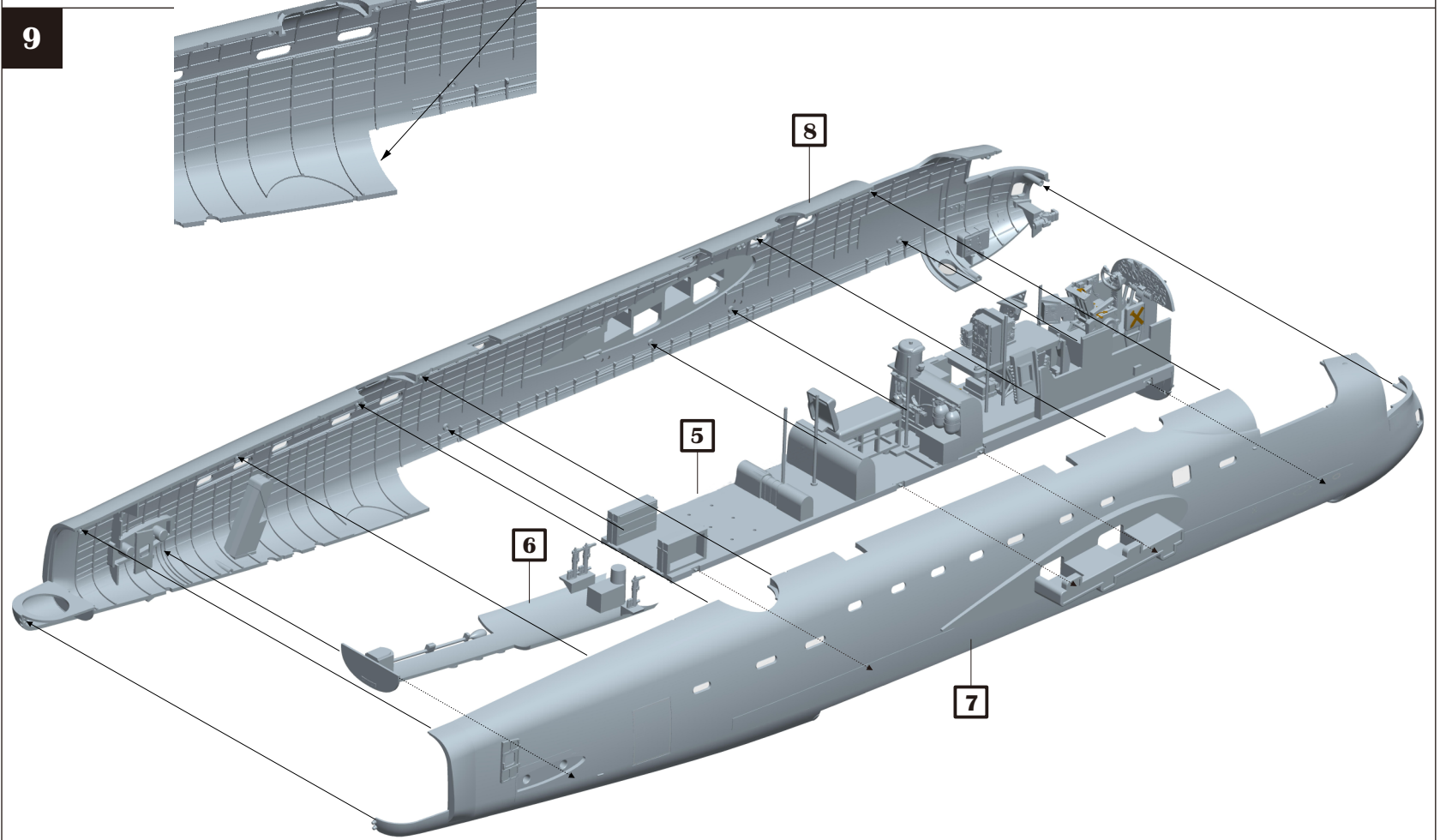
7



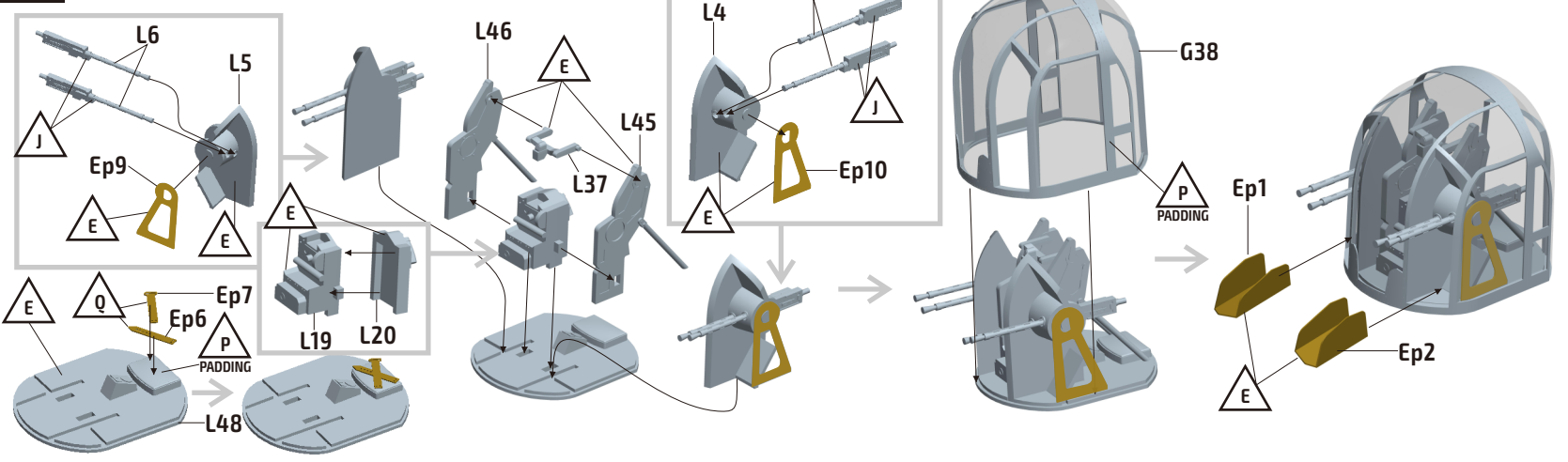
8



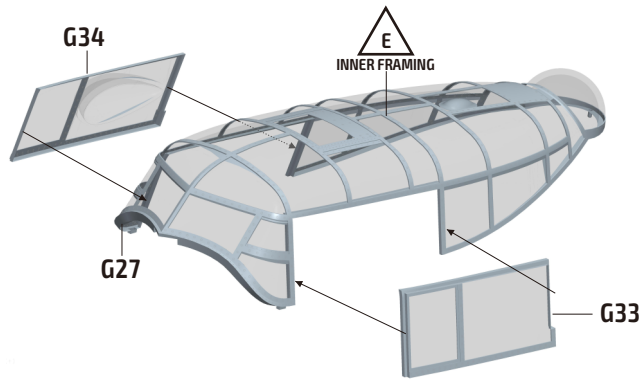
9



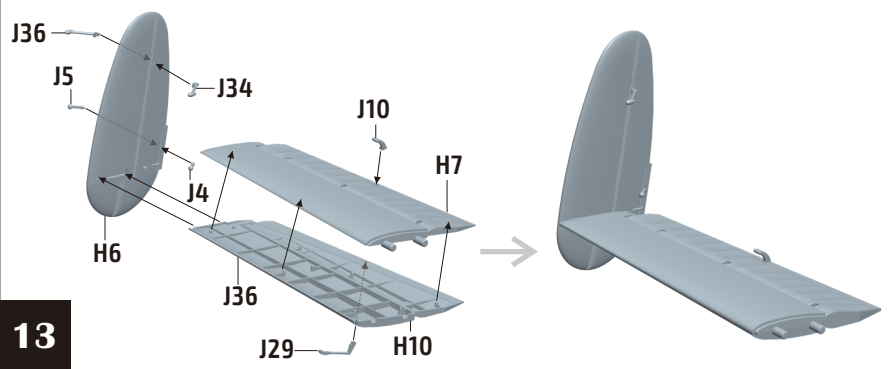
10



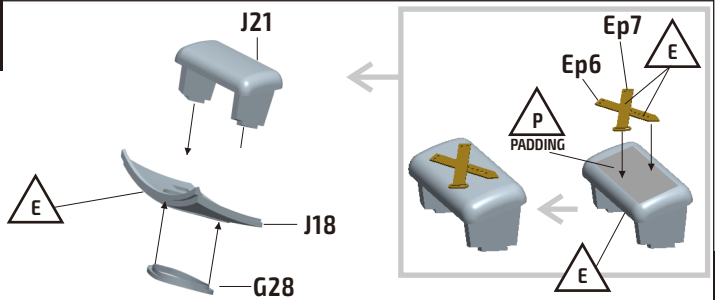
11



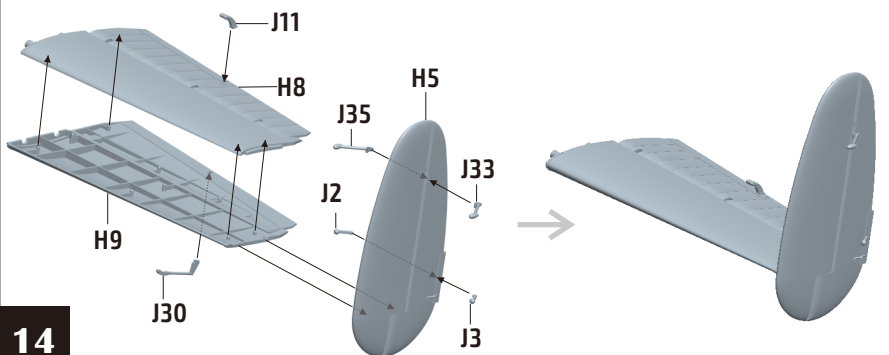
13



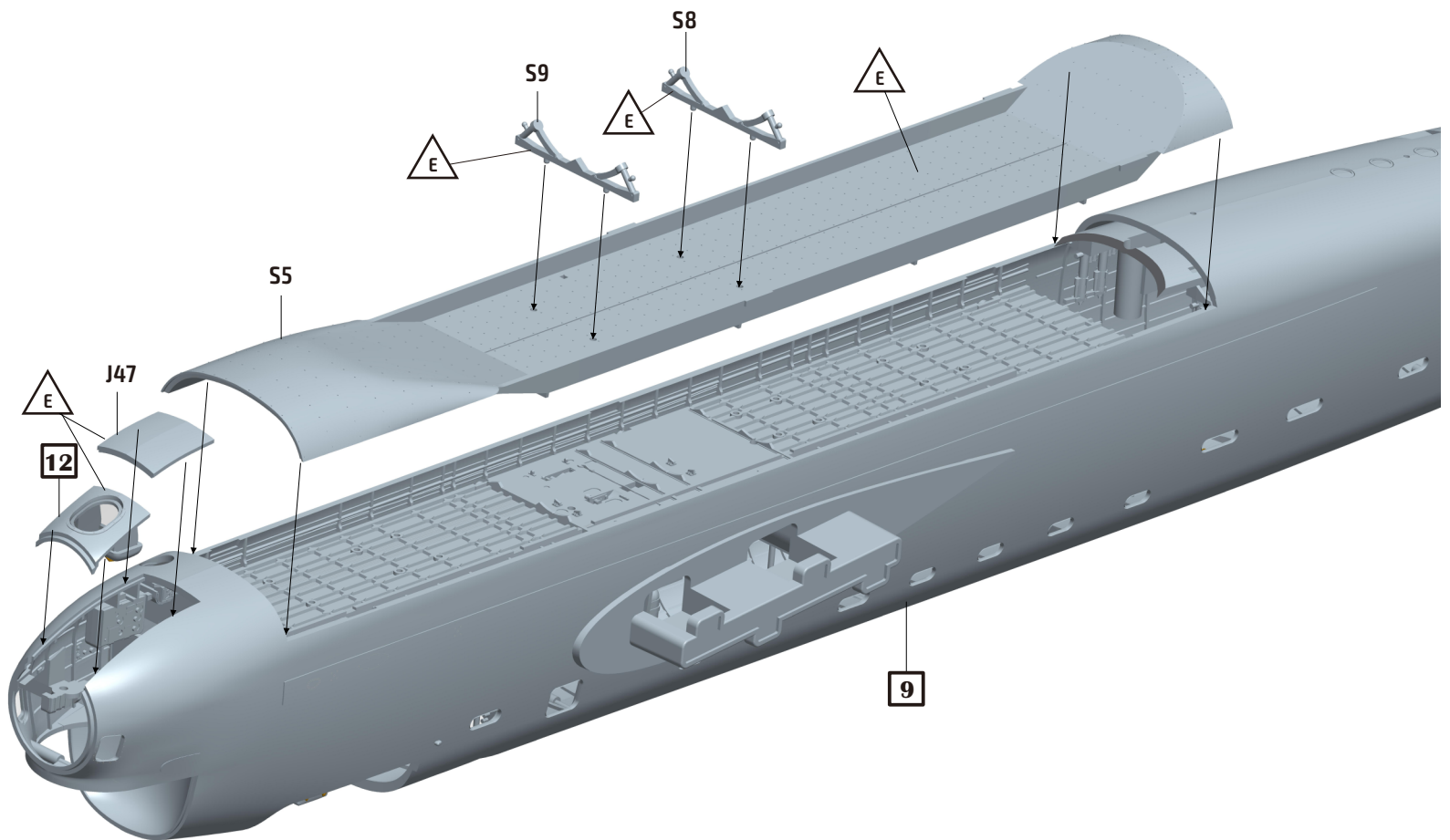
12



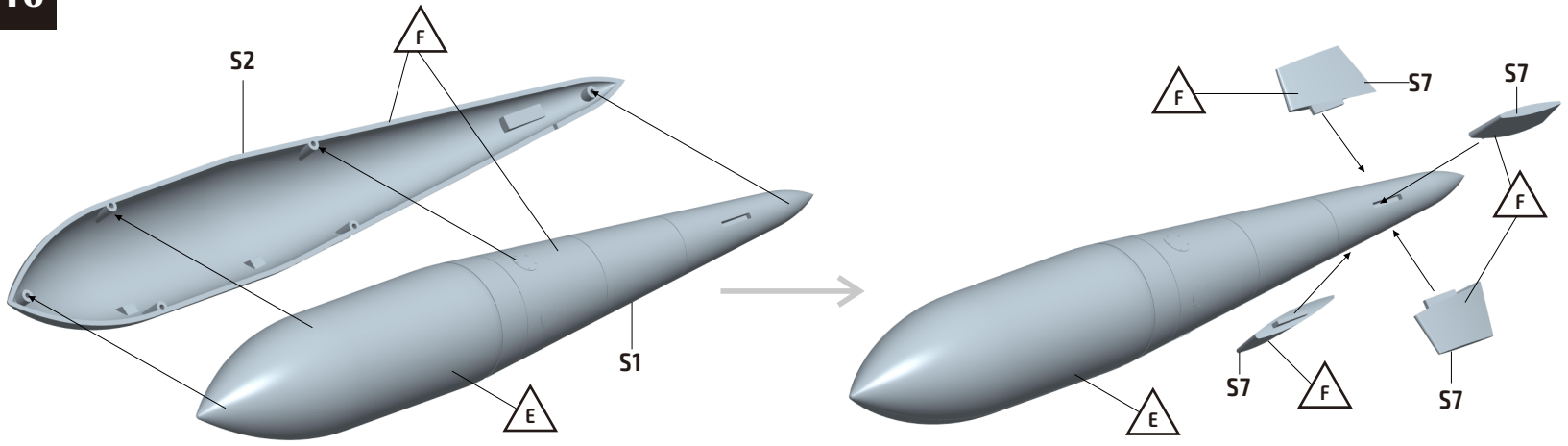
14



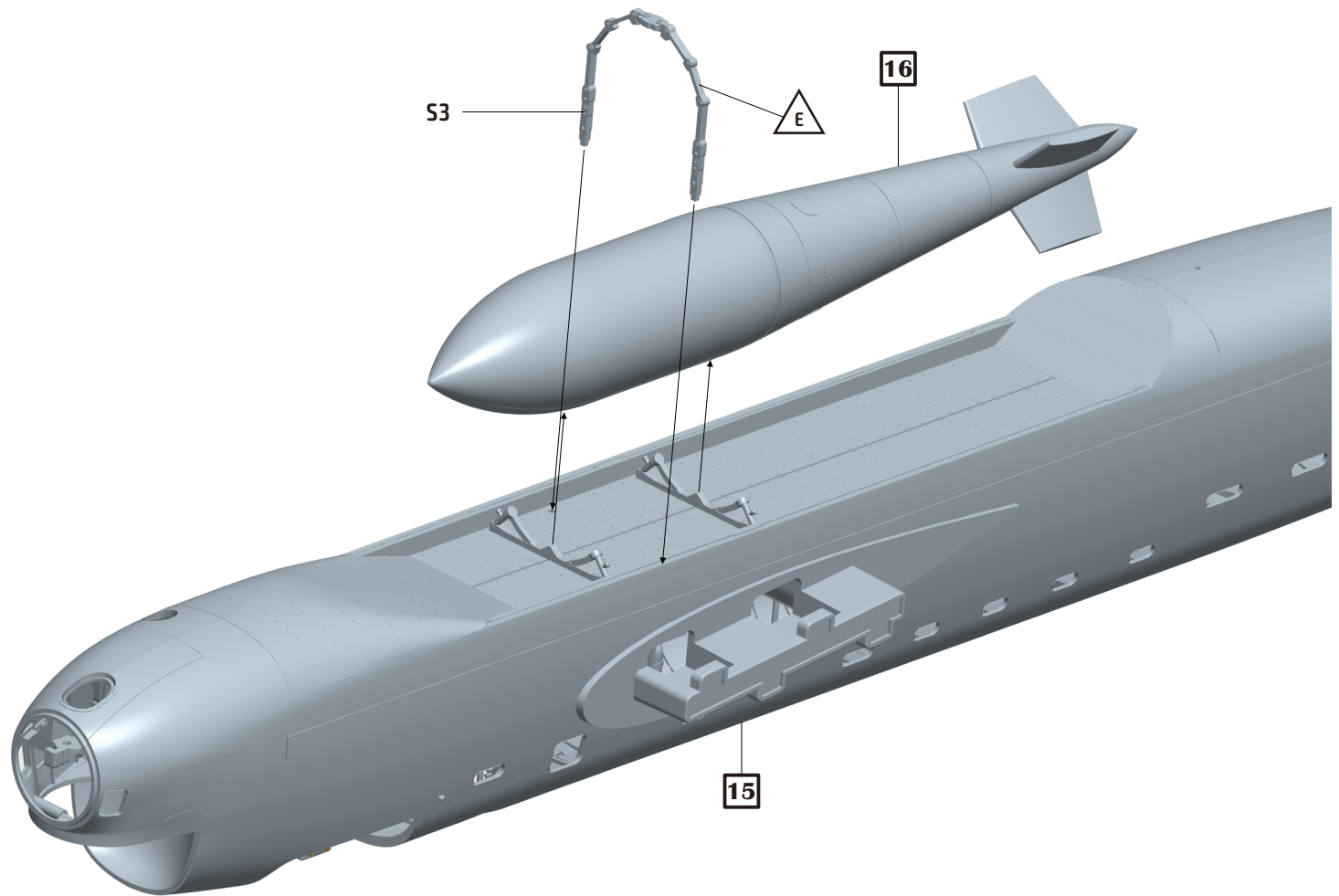
15



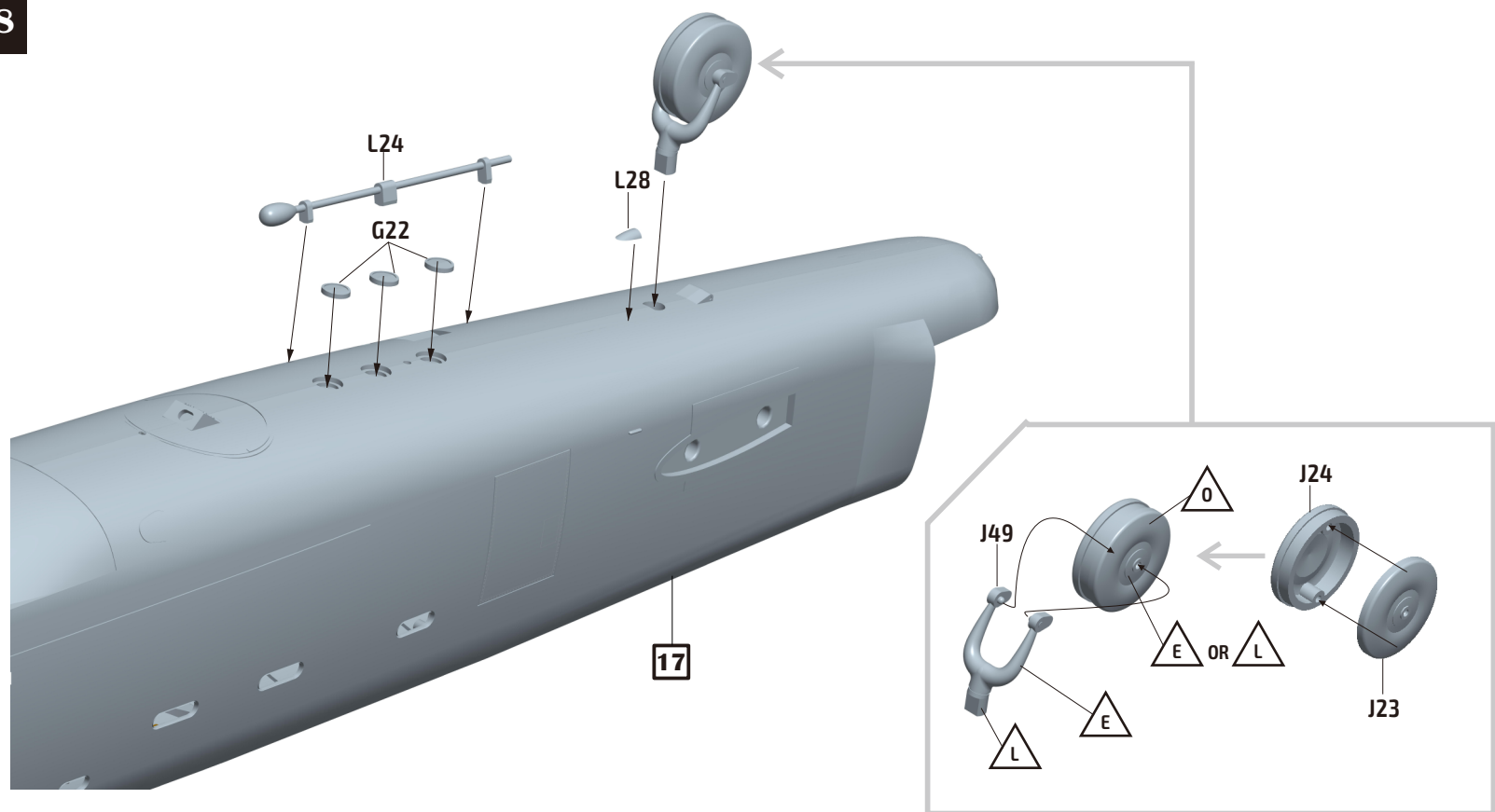
16



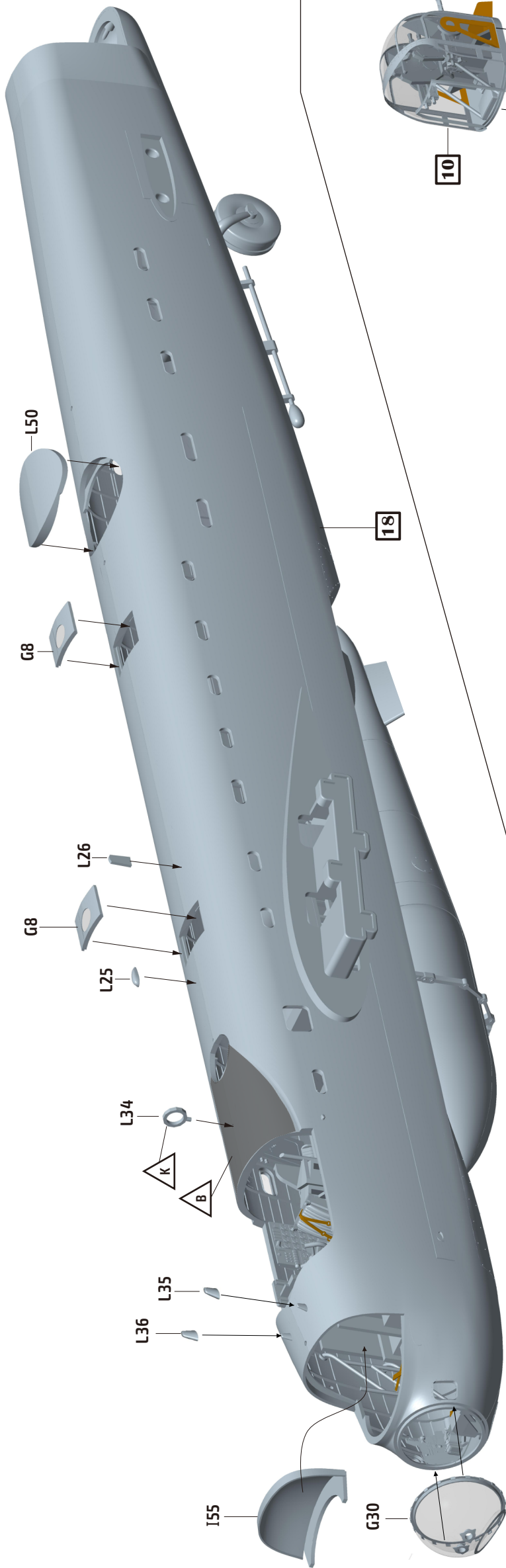
17



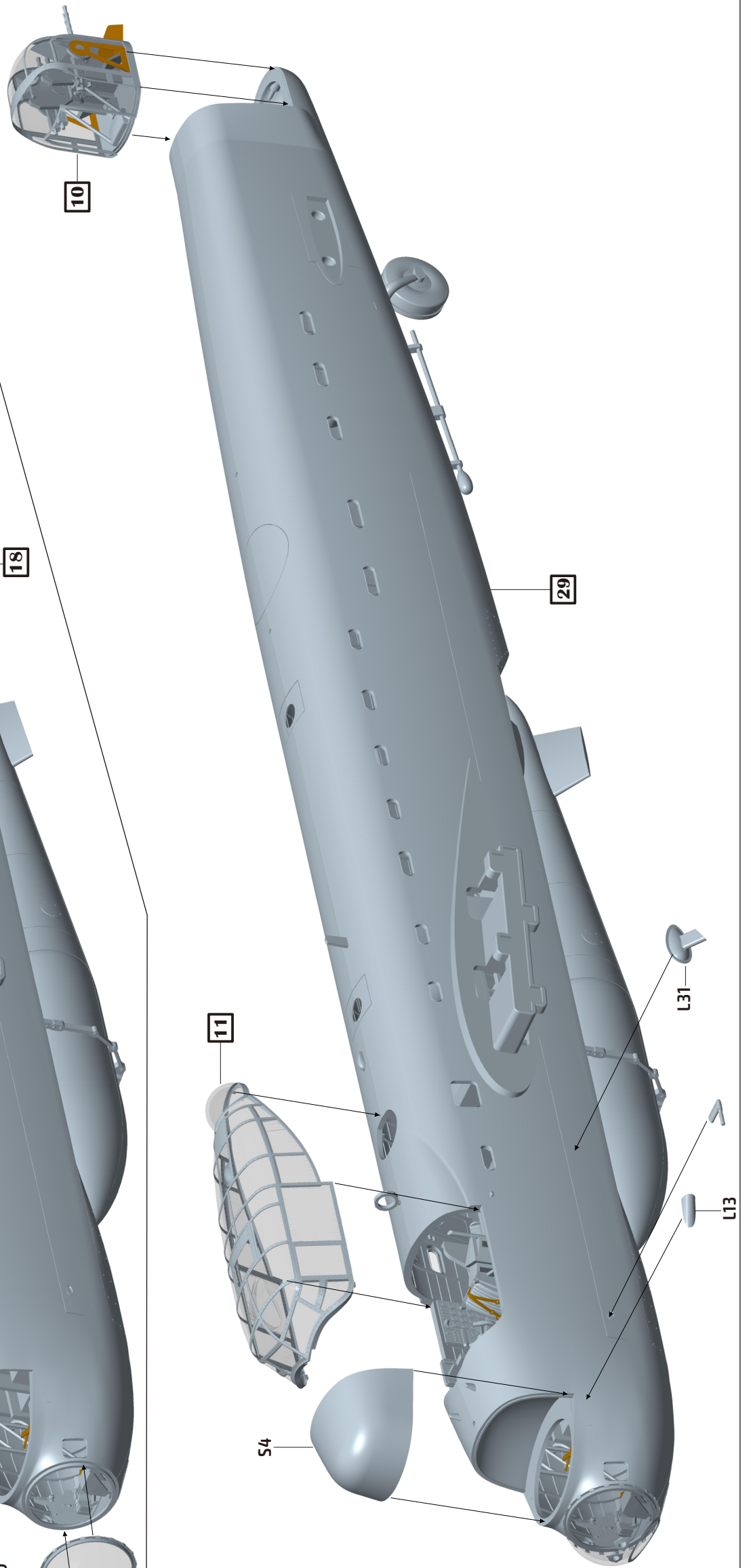
18

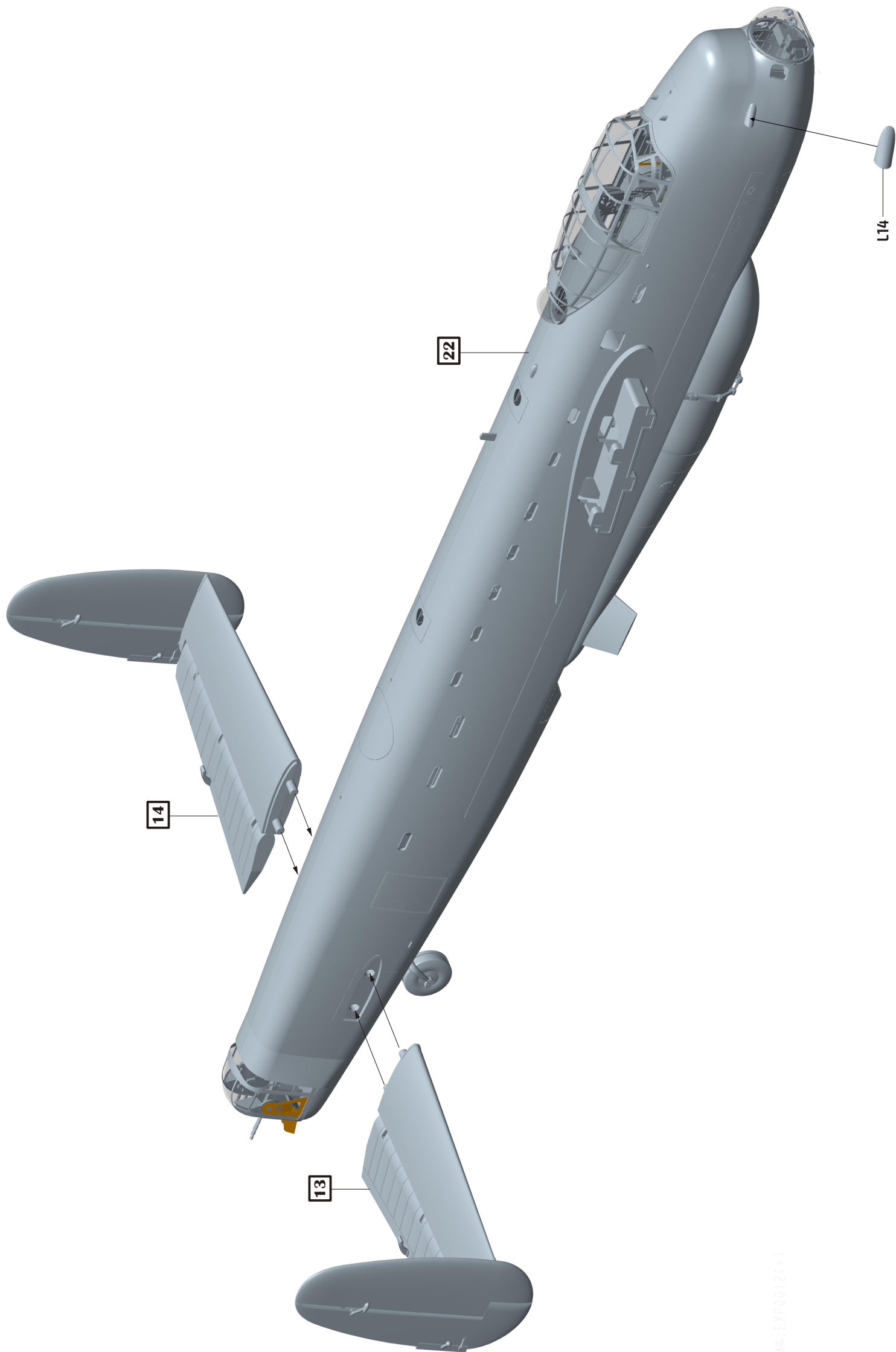


19



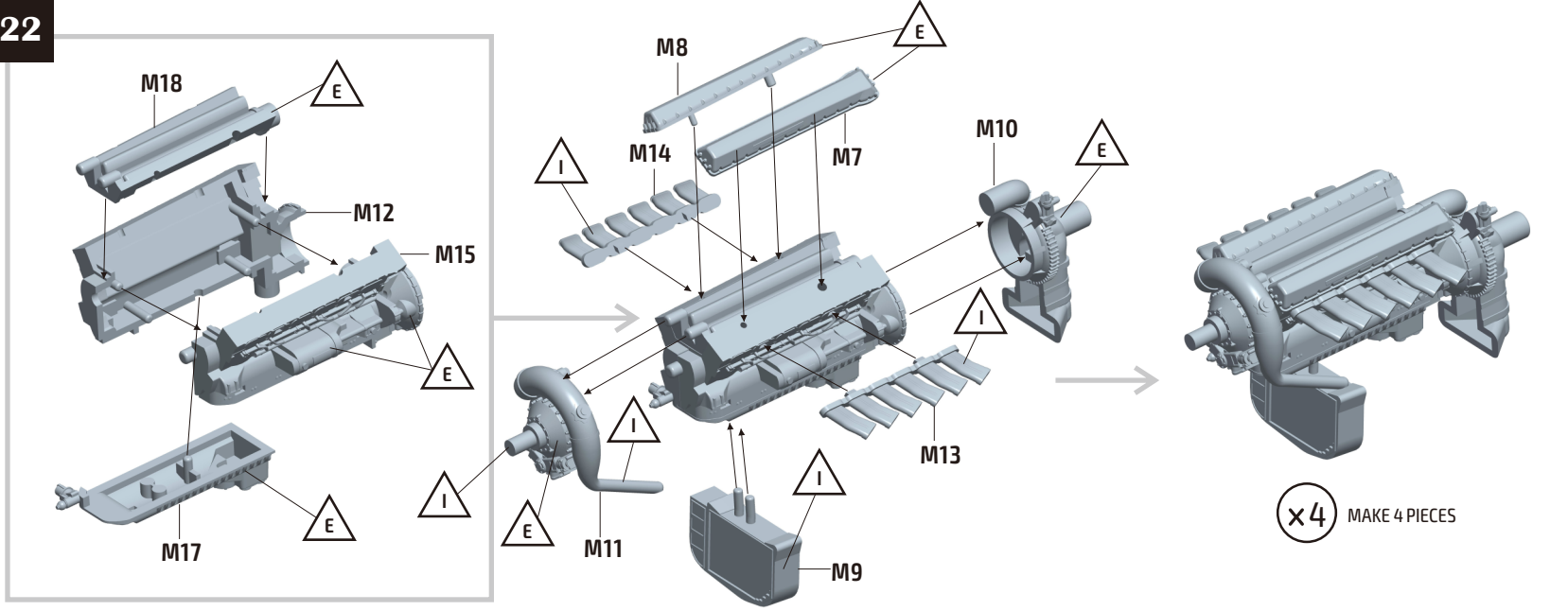
20



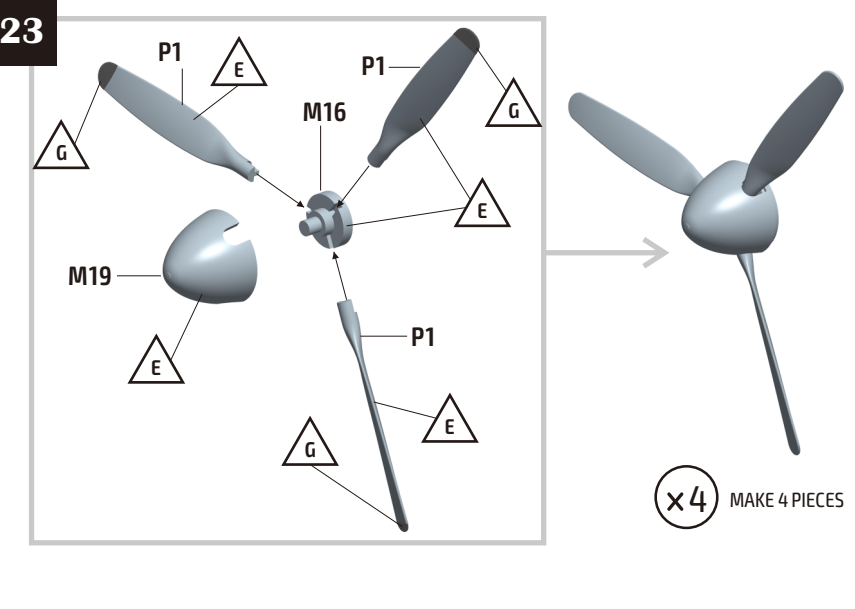


##EXP0012(+)

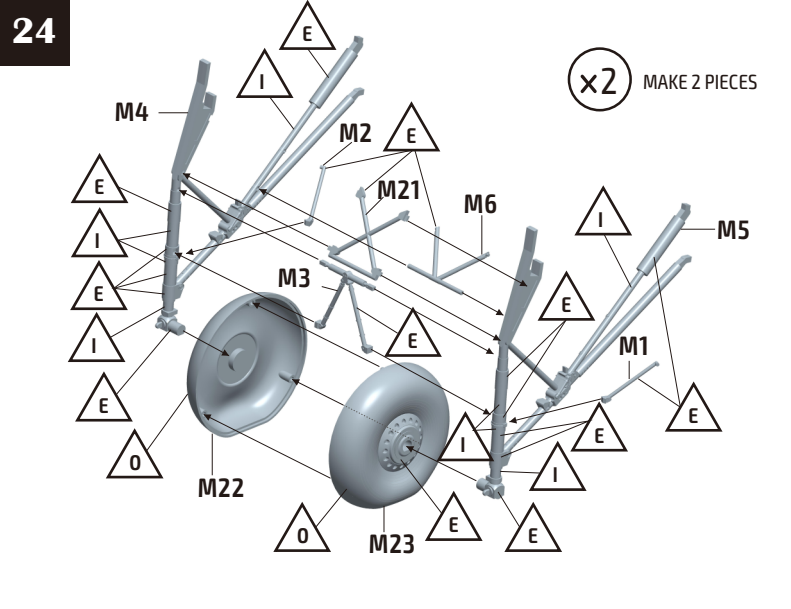
22



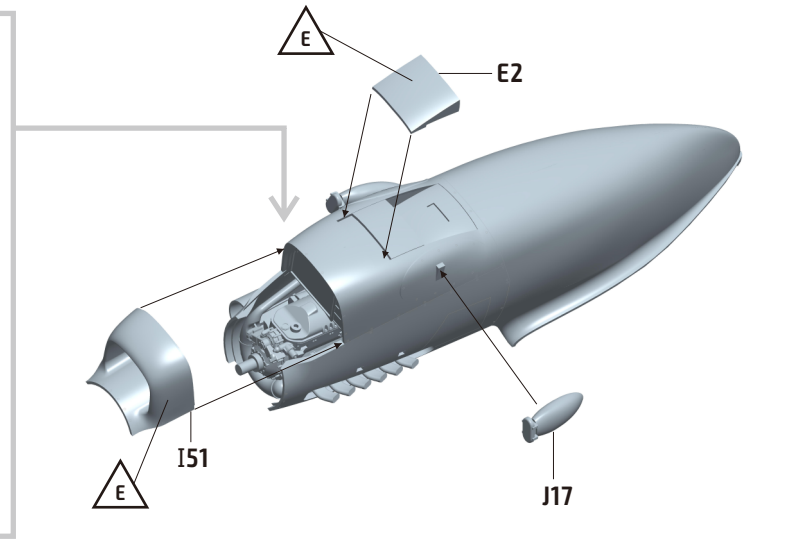
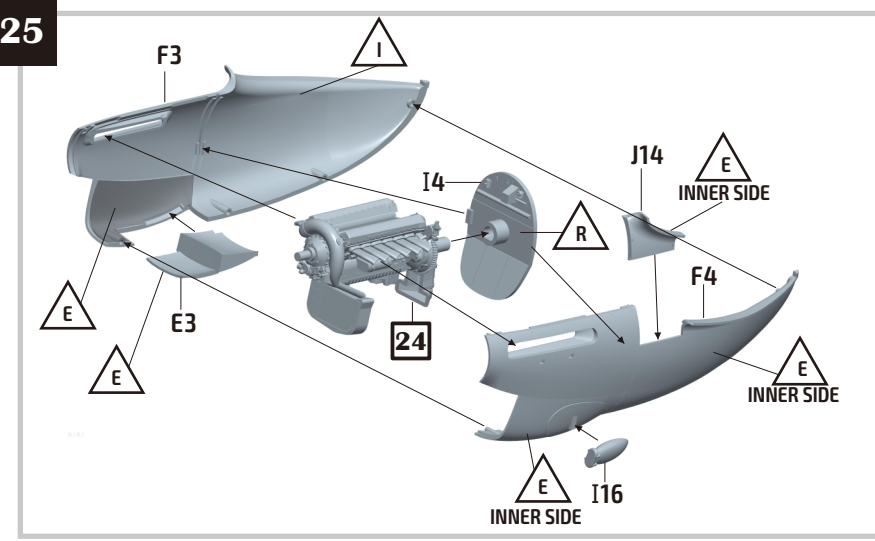
23



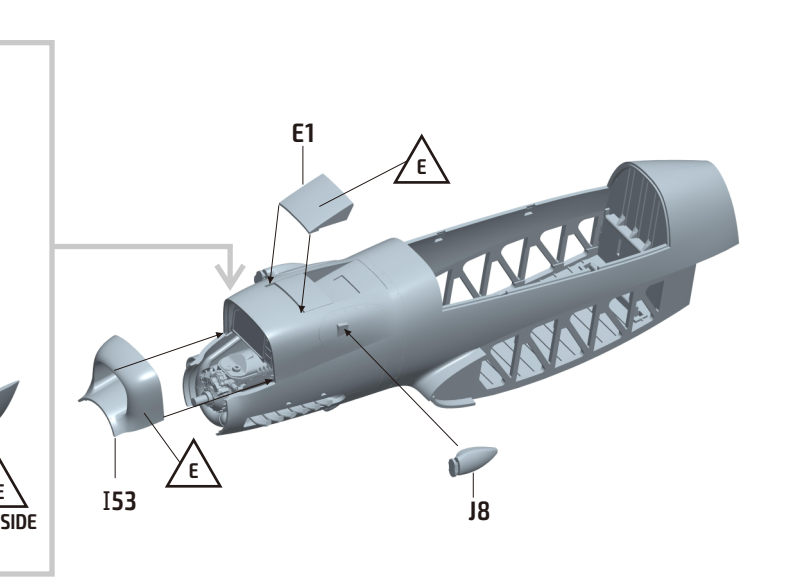
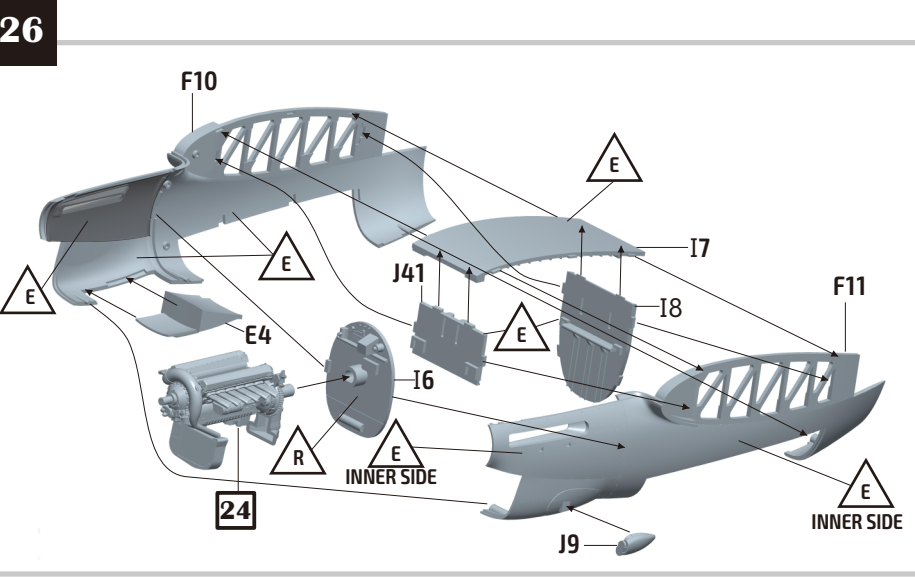
24



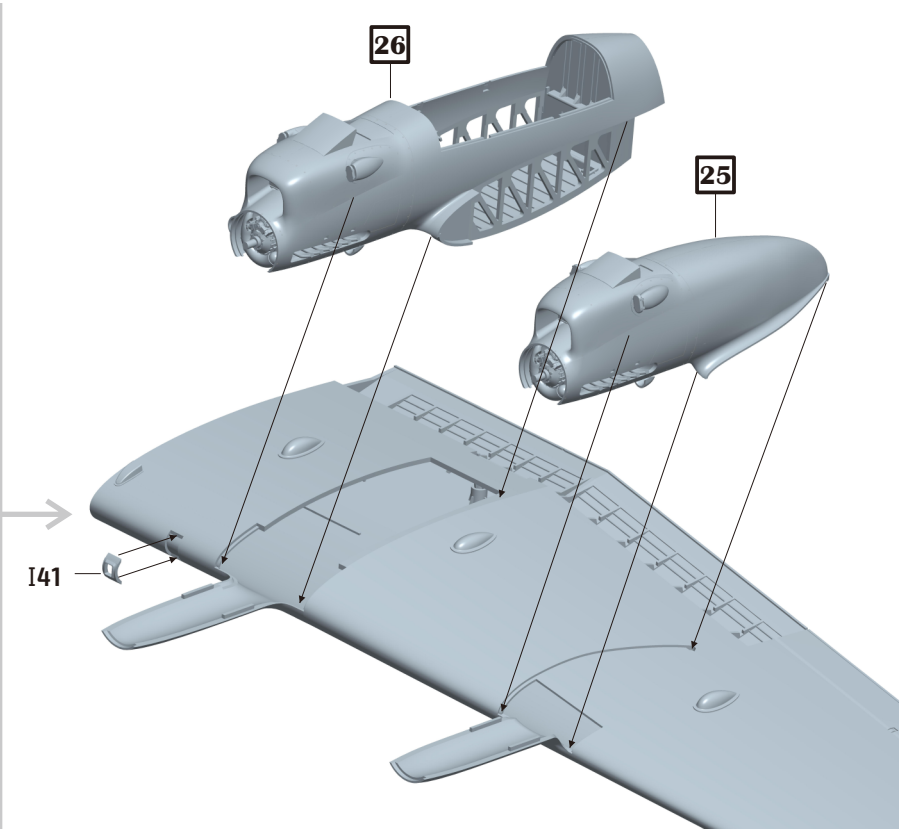
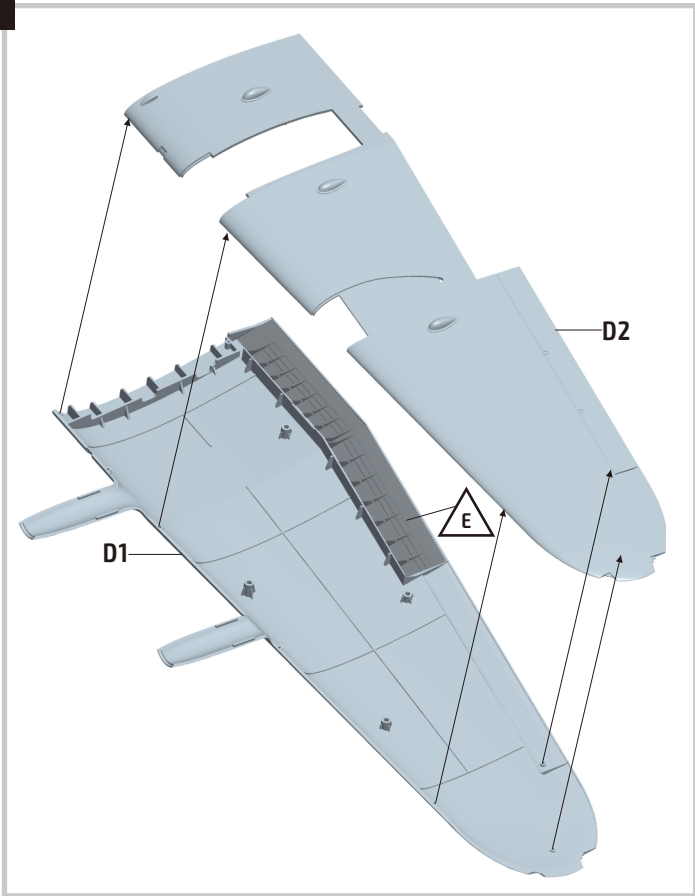
25



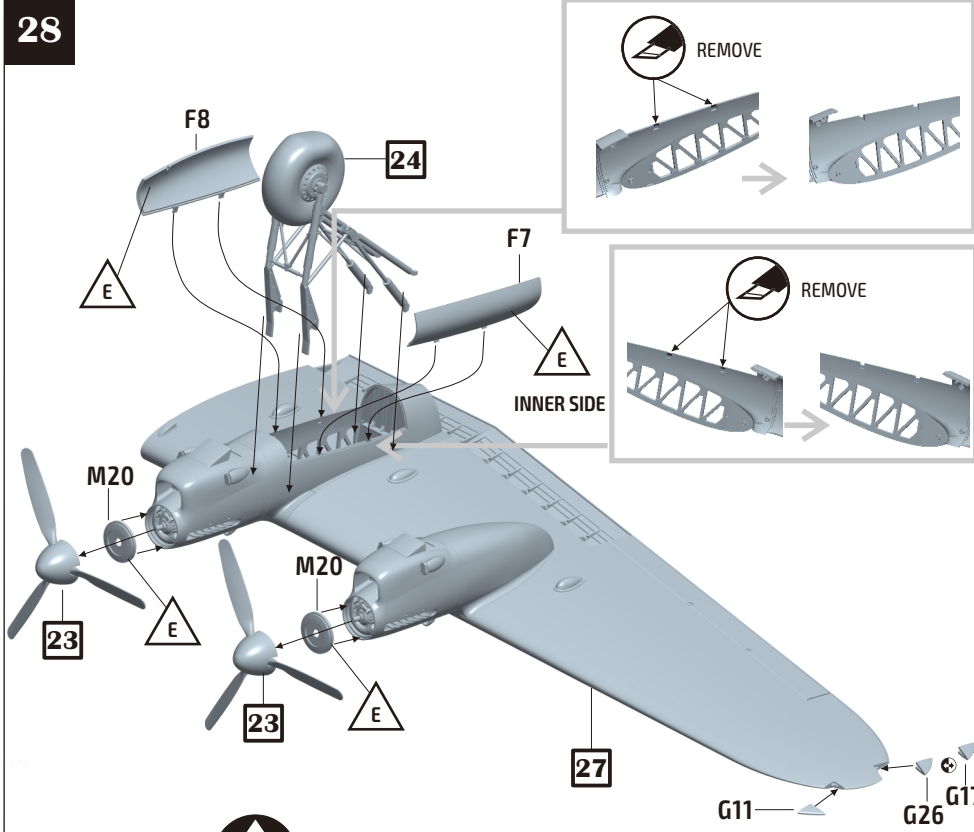
26



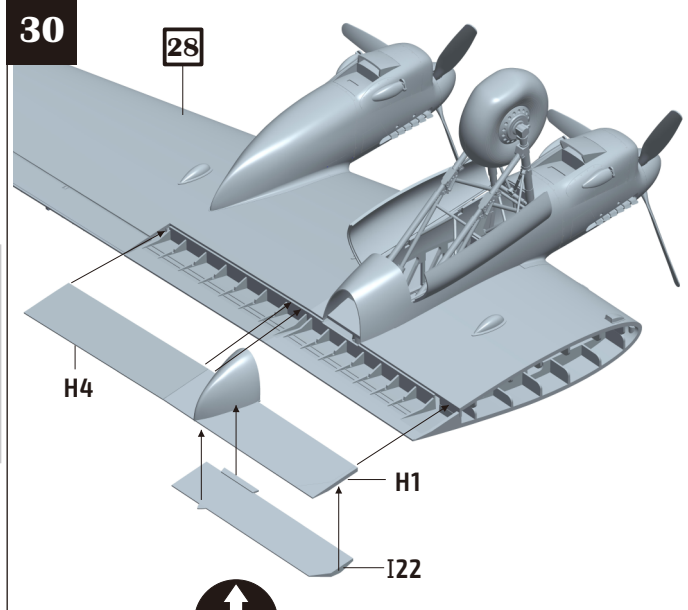
27



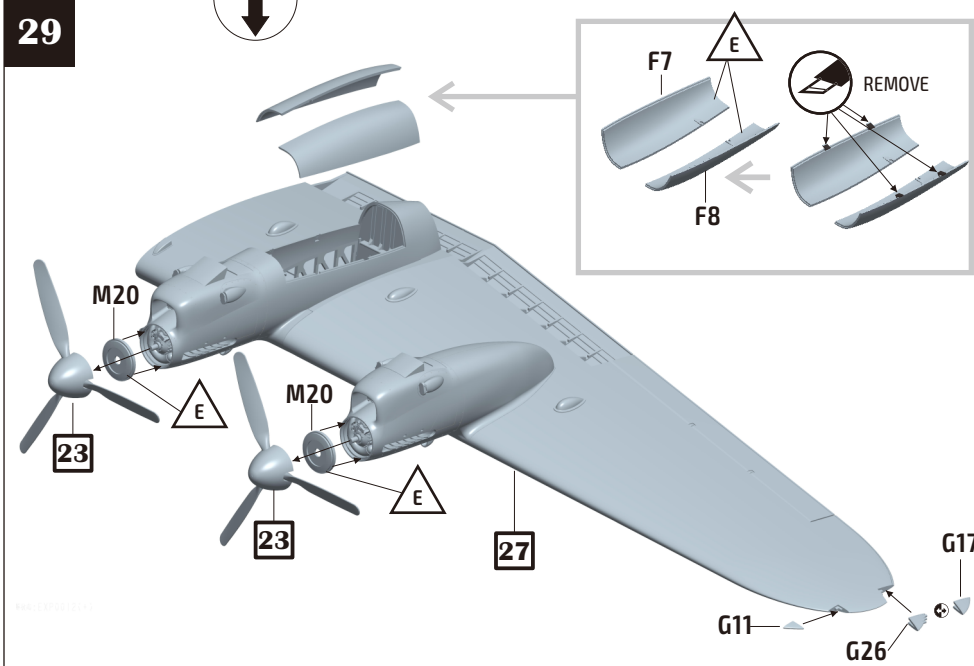
28



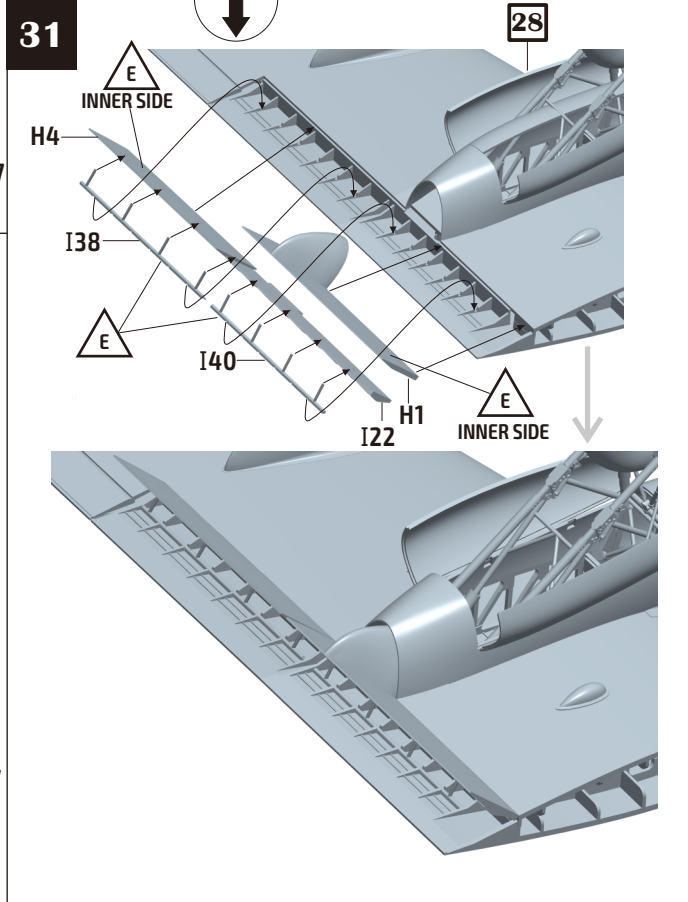
30



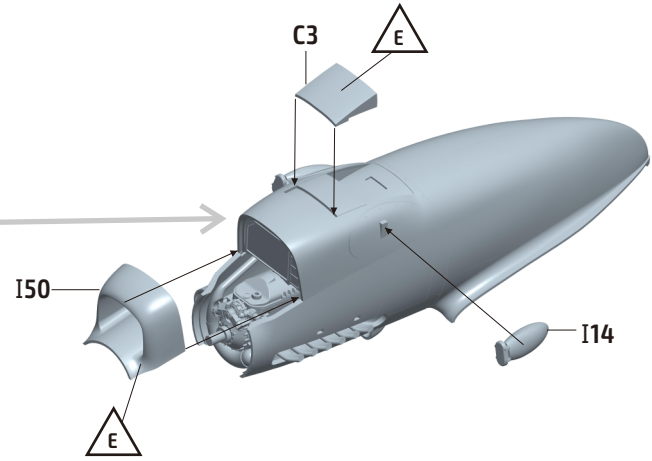
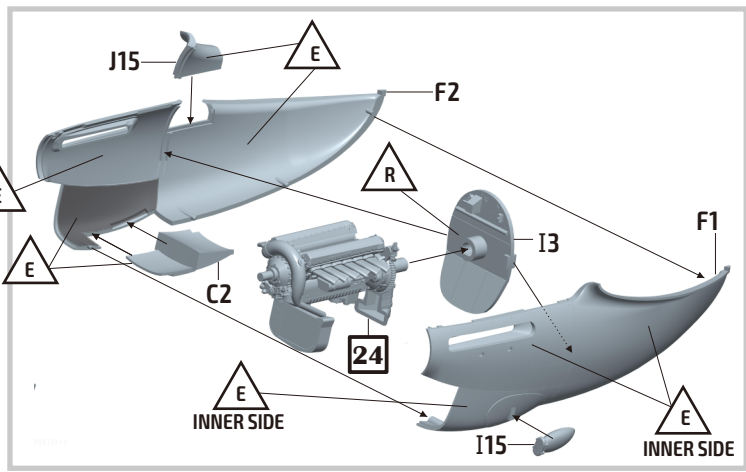
29



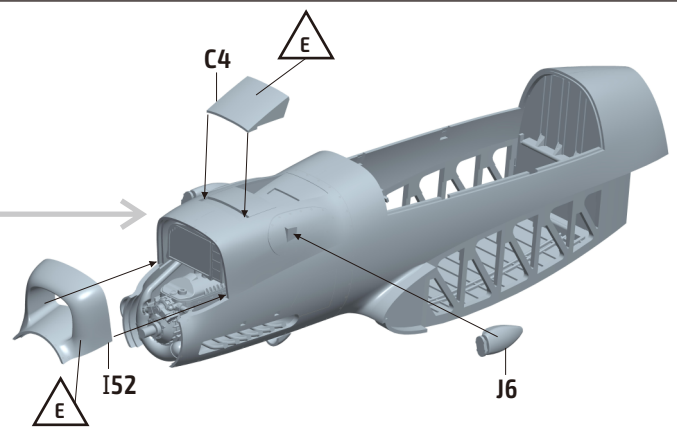
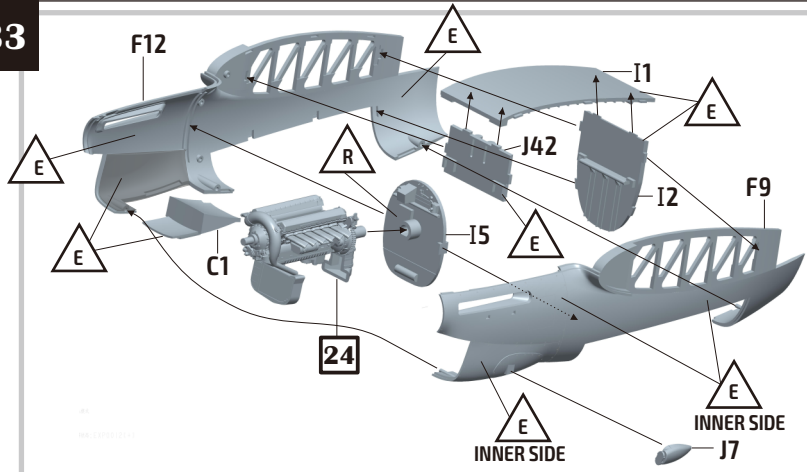
31



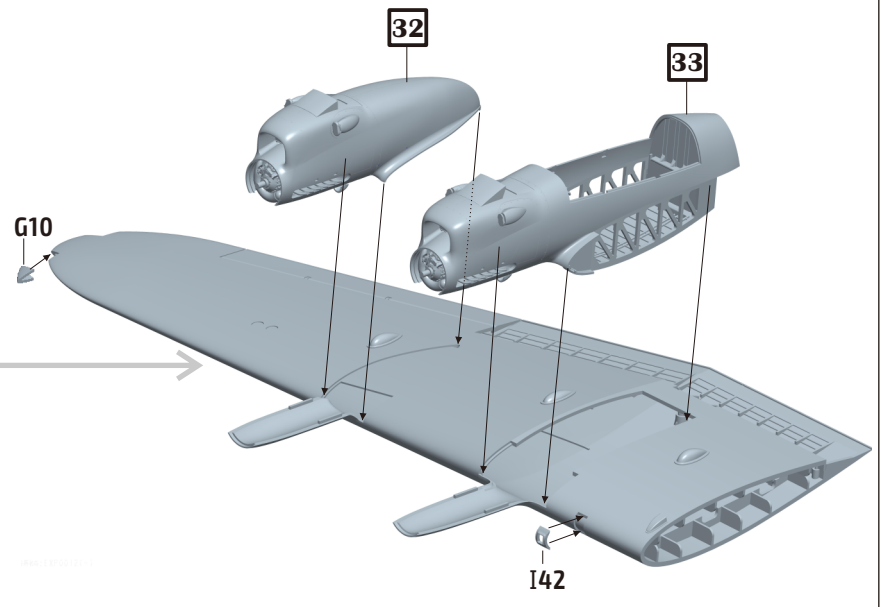
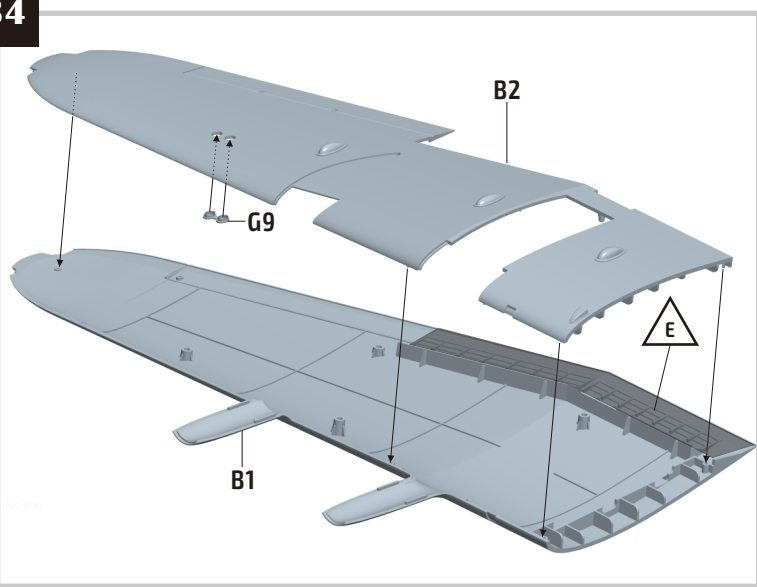
32



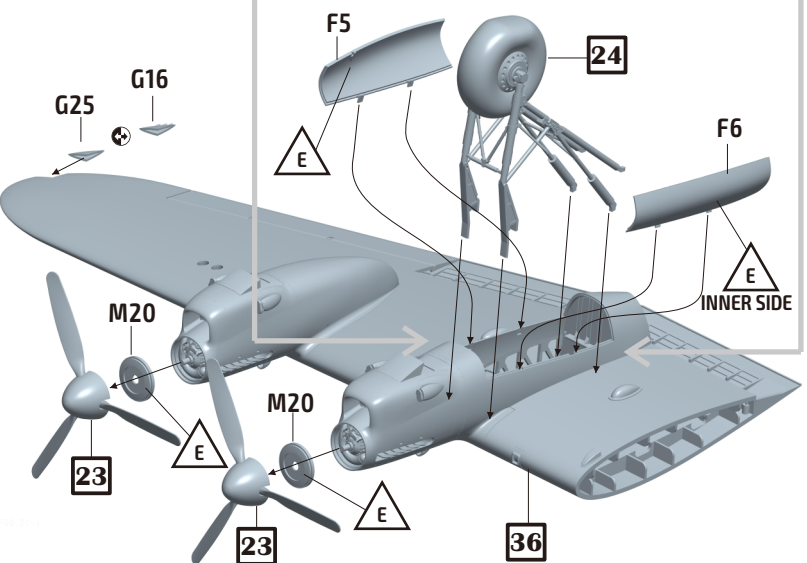
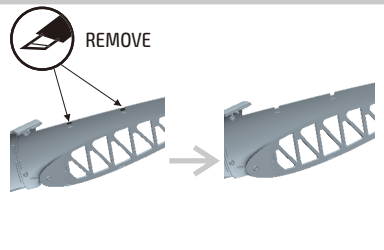
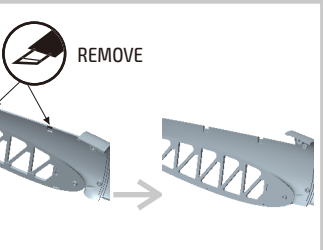
33



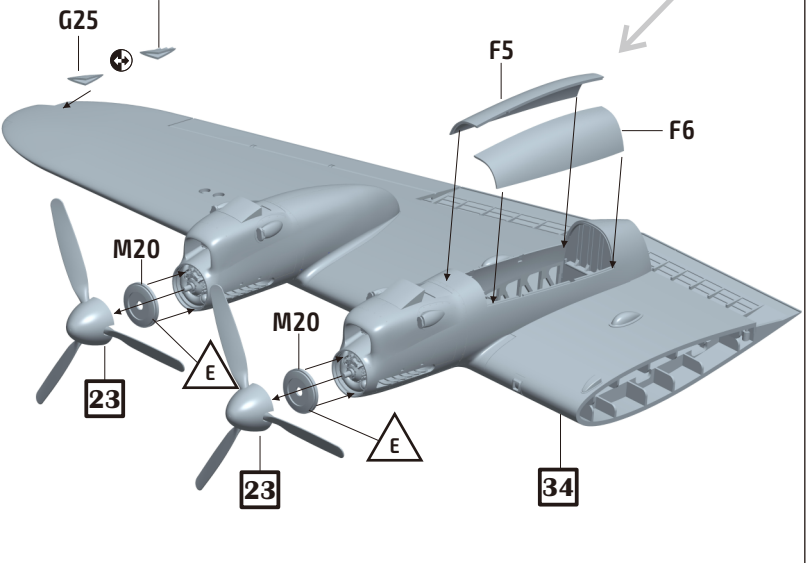
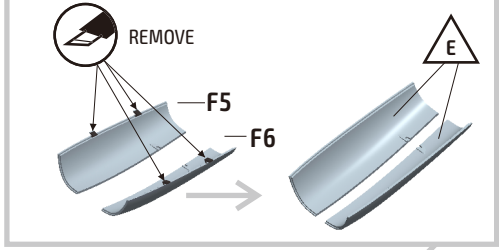
34



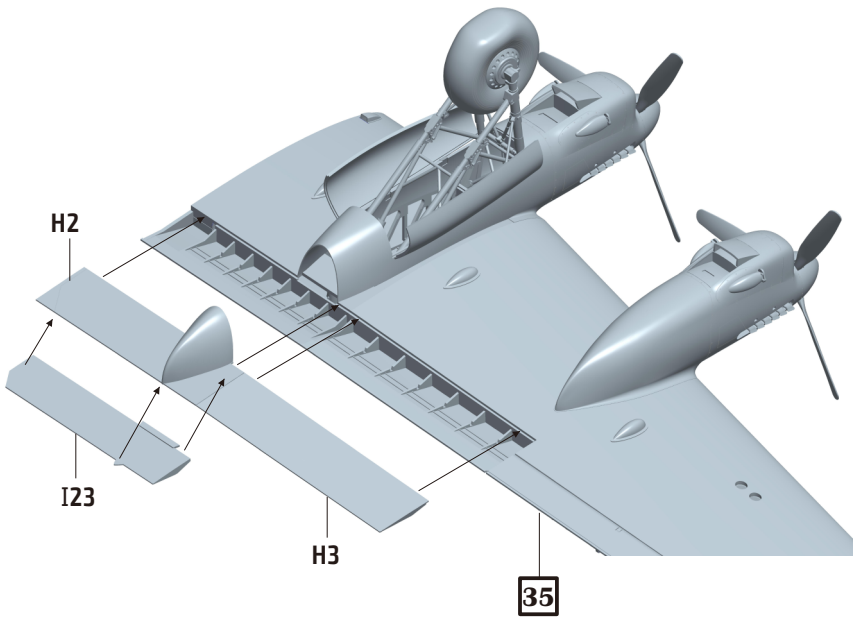
35



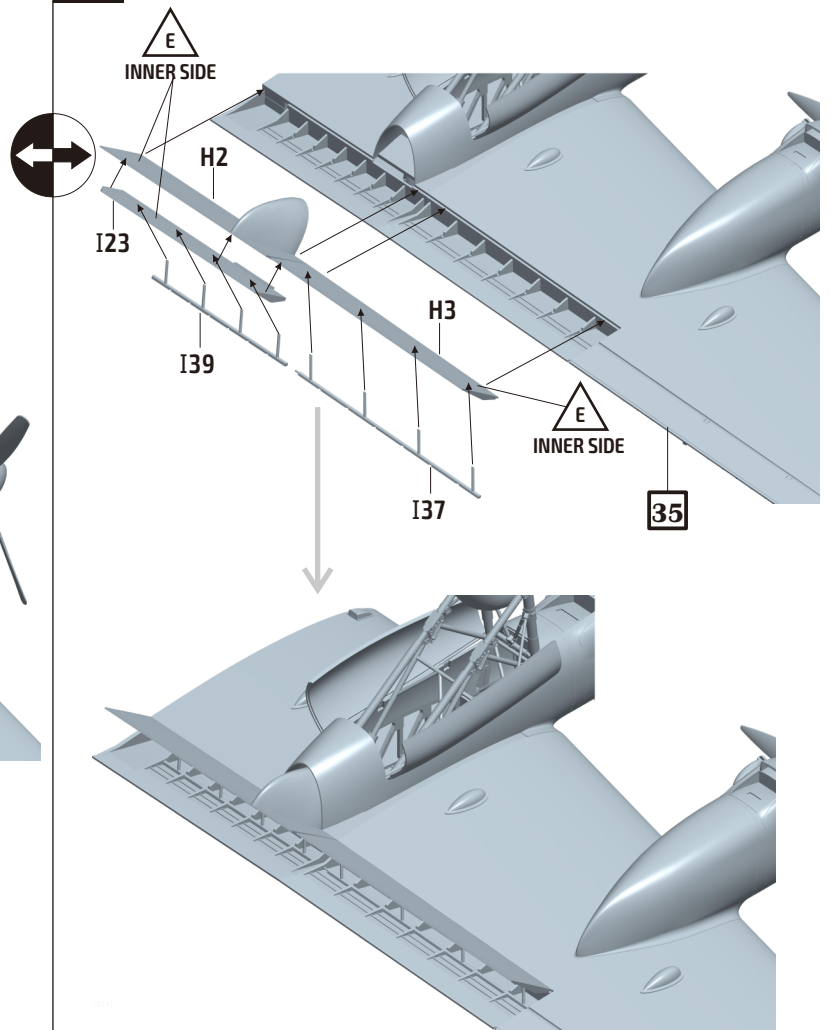
36



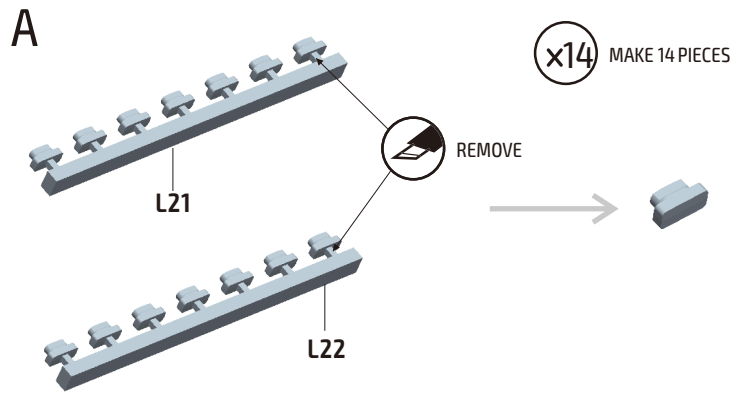
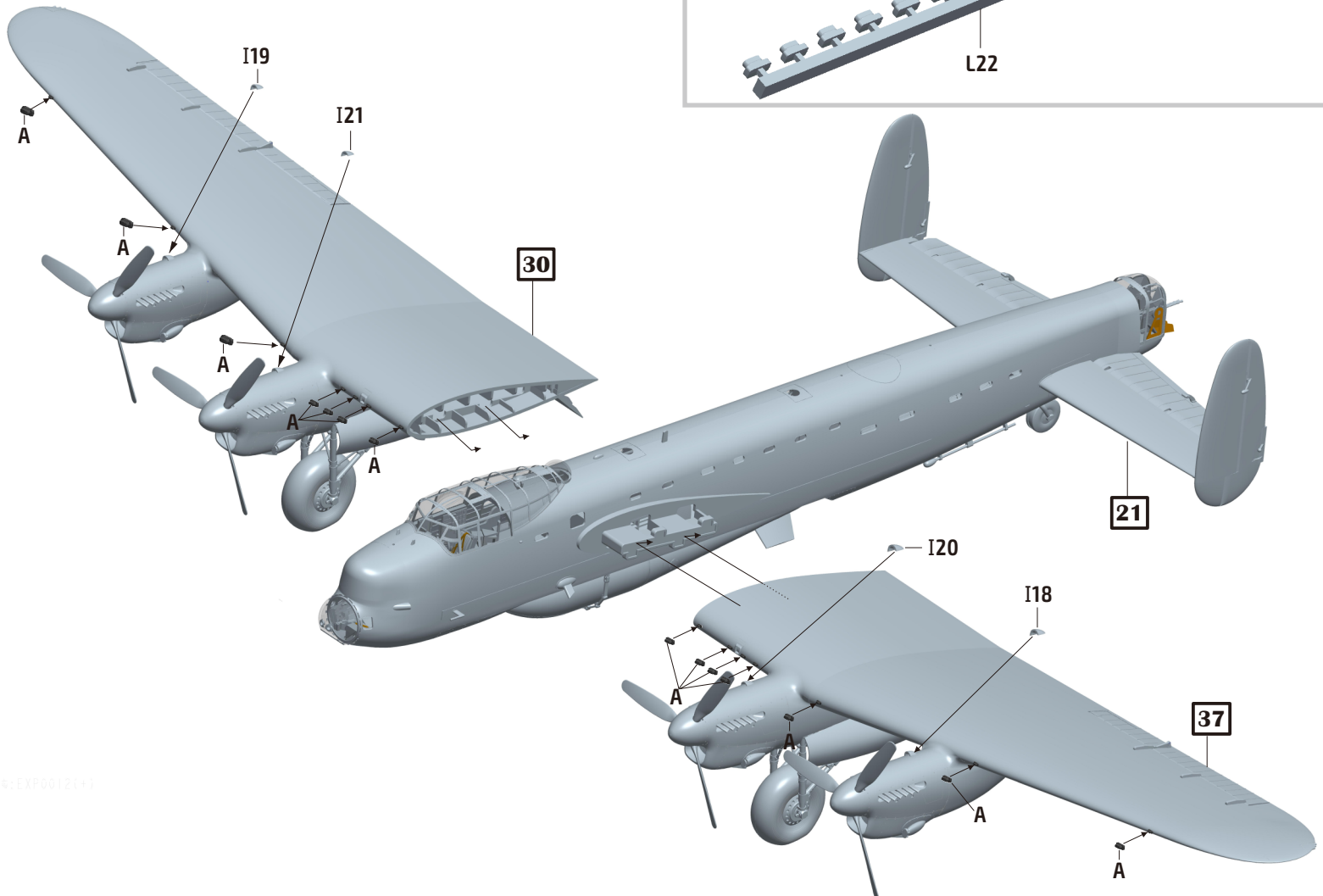
37



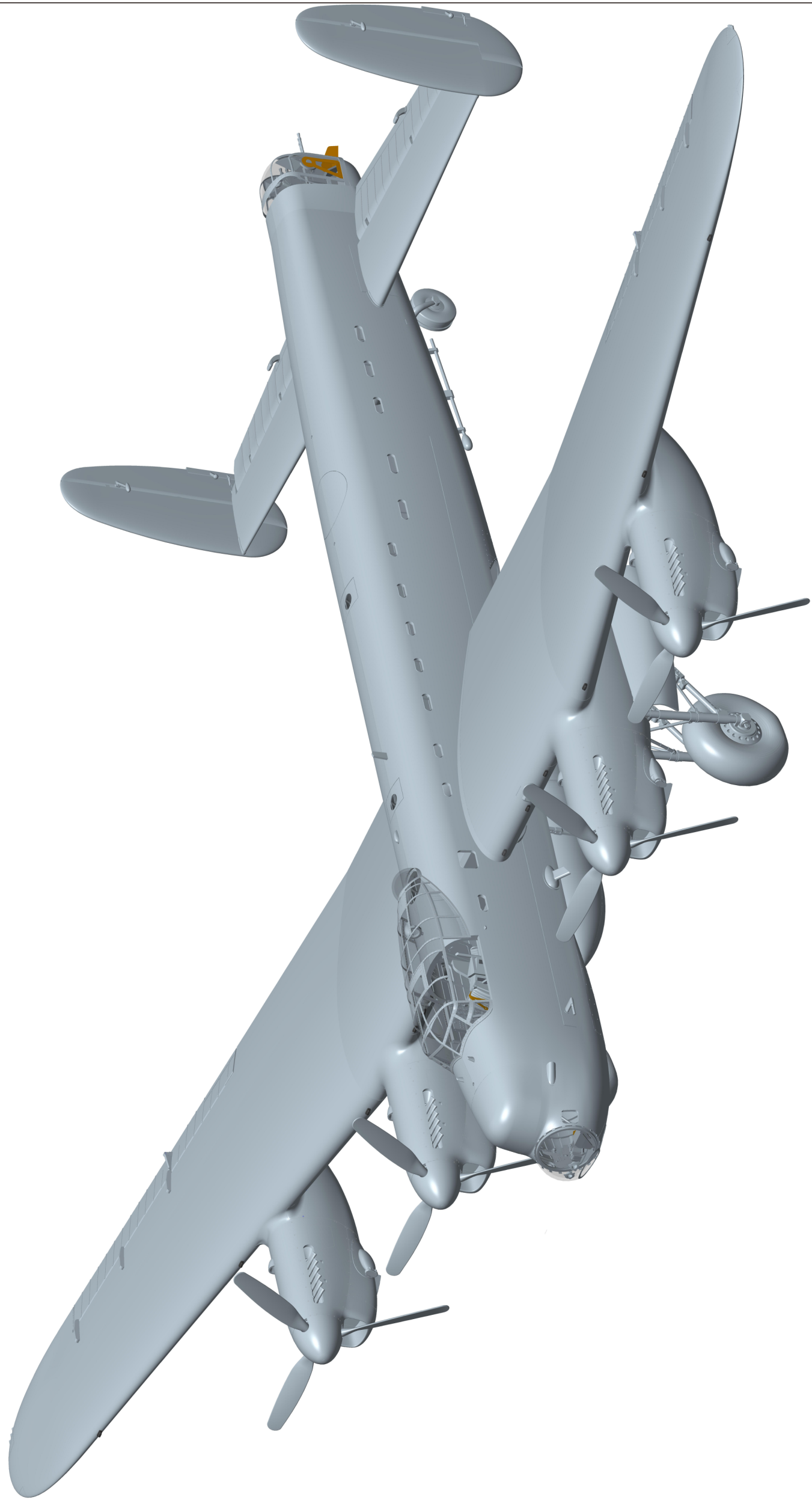
38



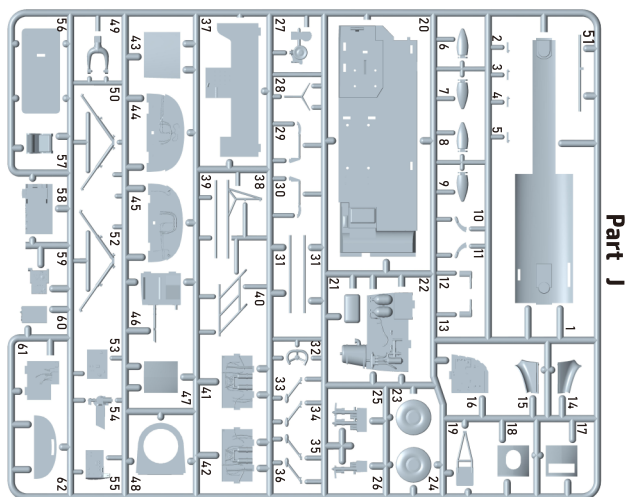
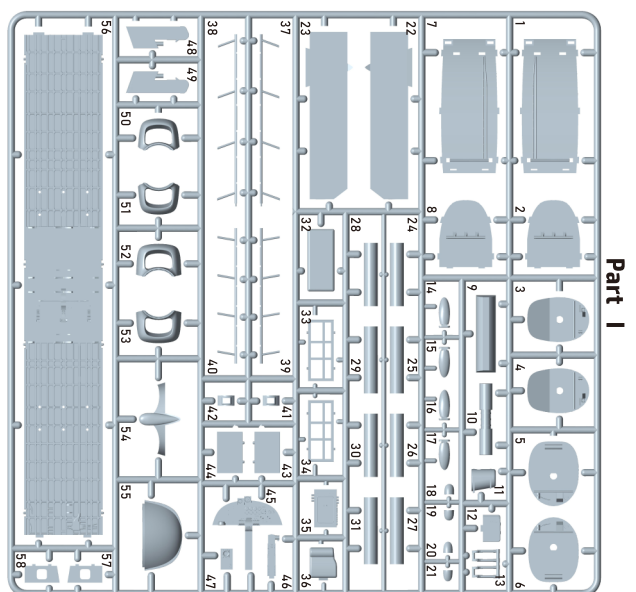
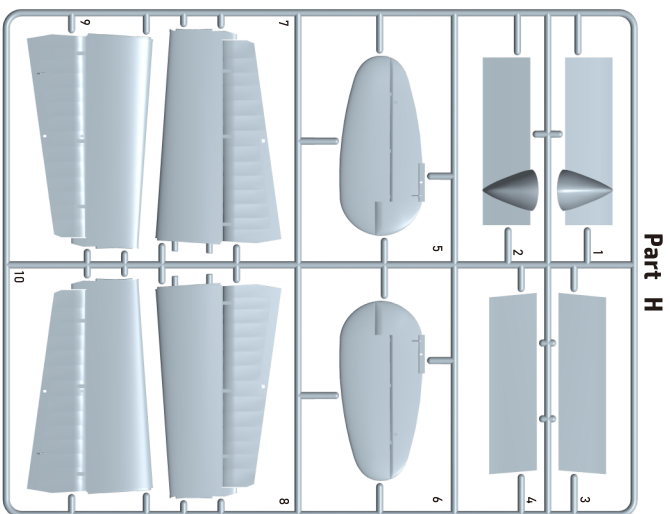
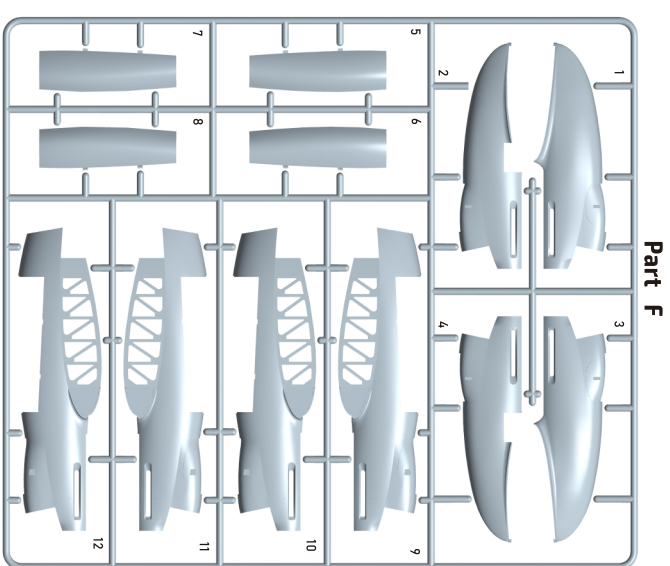
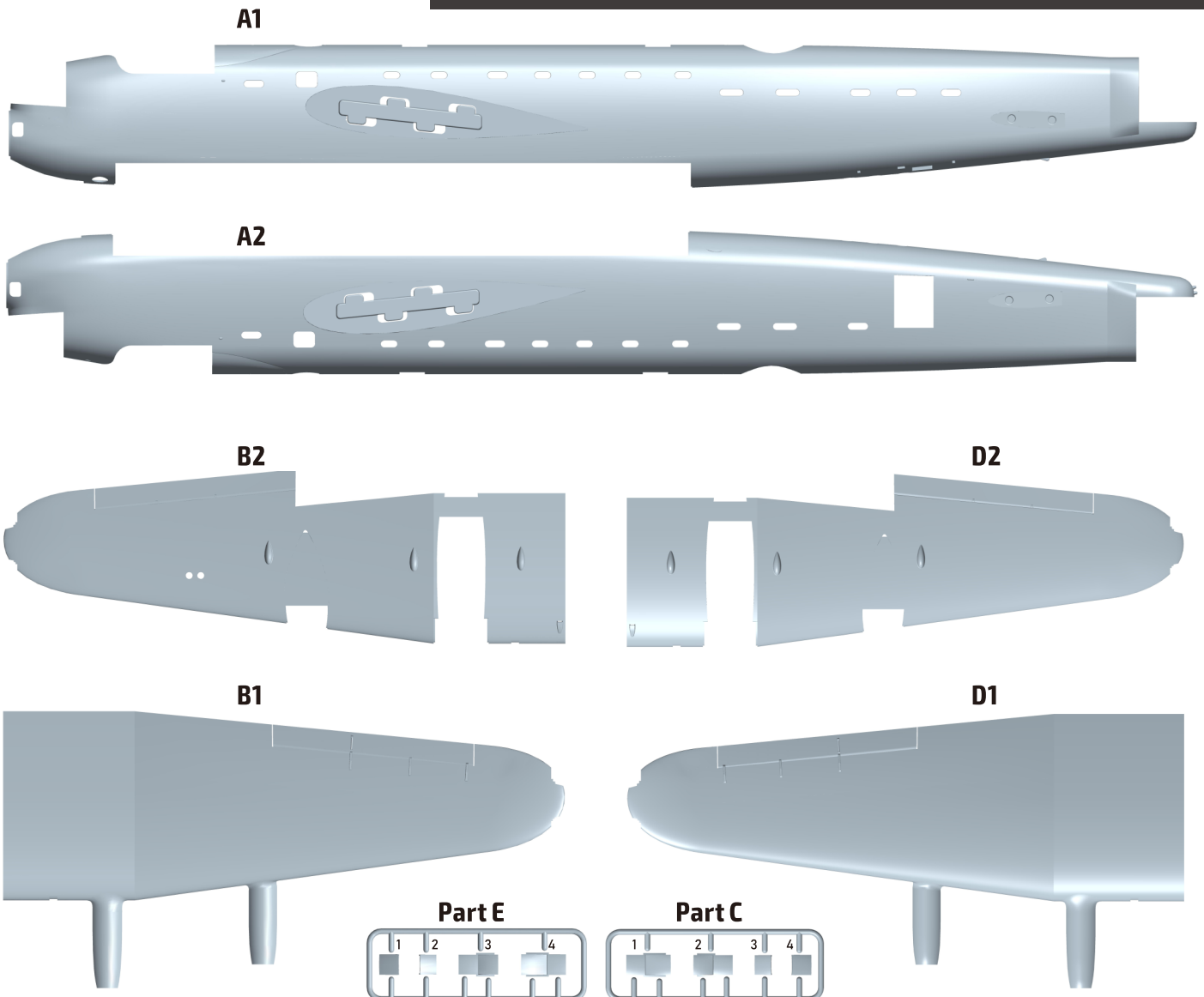
39



EXP0012111

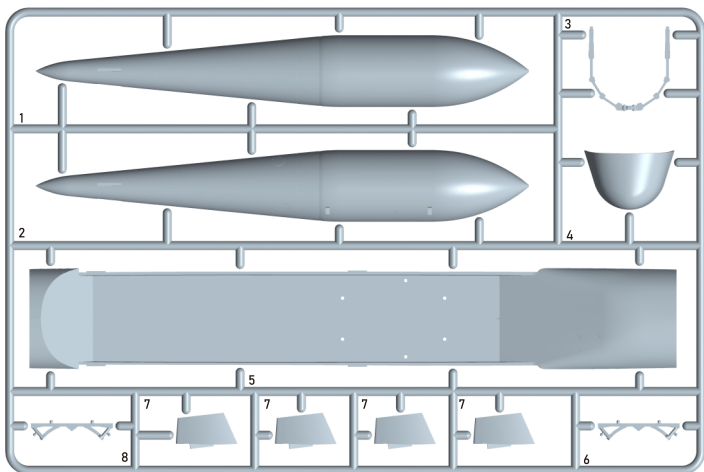


Parts

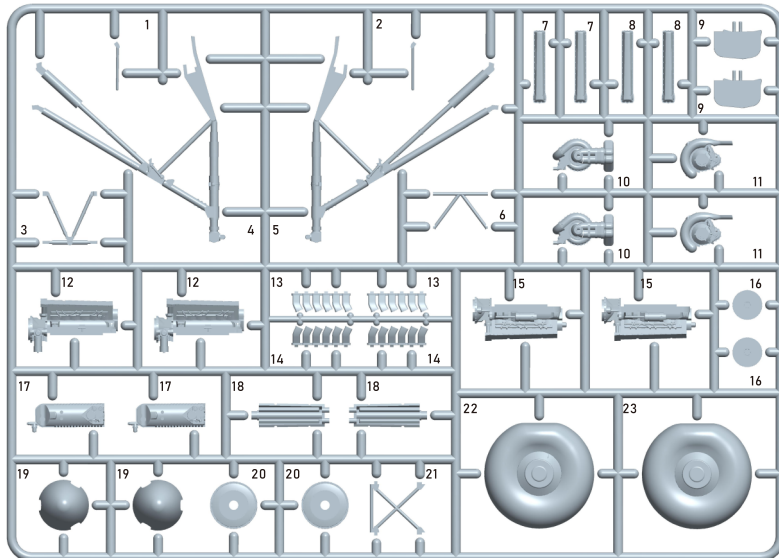


Parts

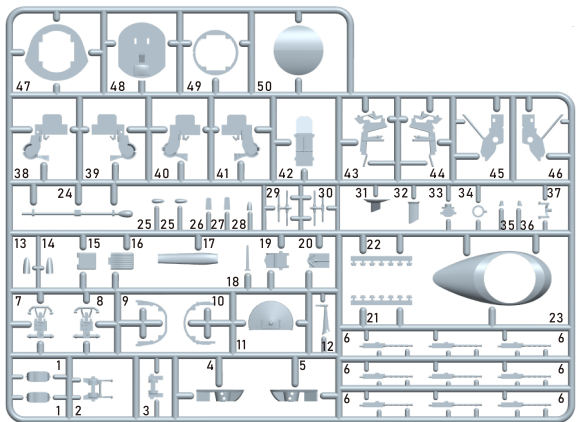
Part S



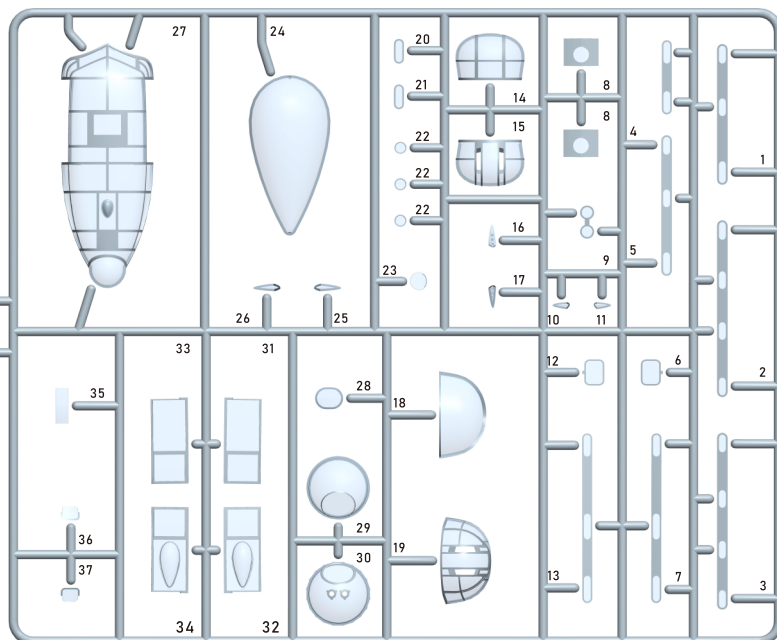
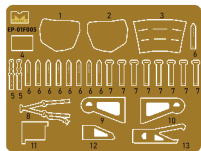
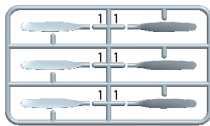
Part M X2



Part L



Part P X2

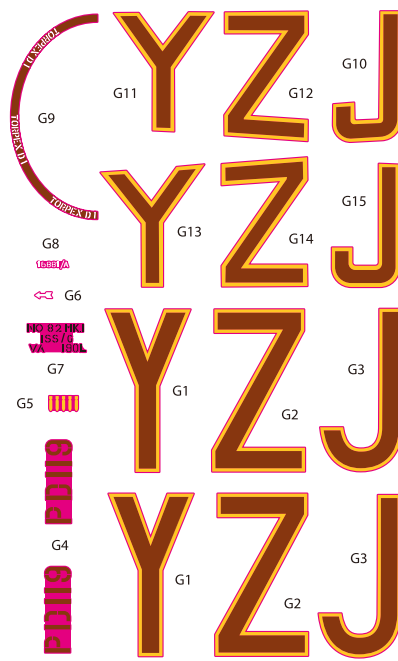
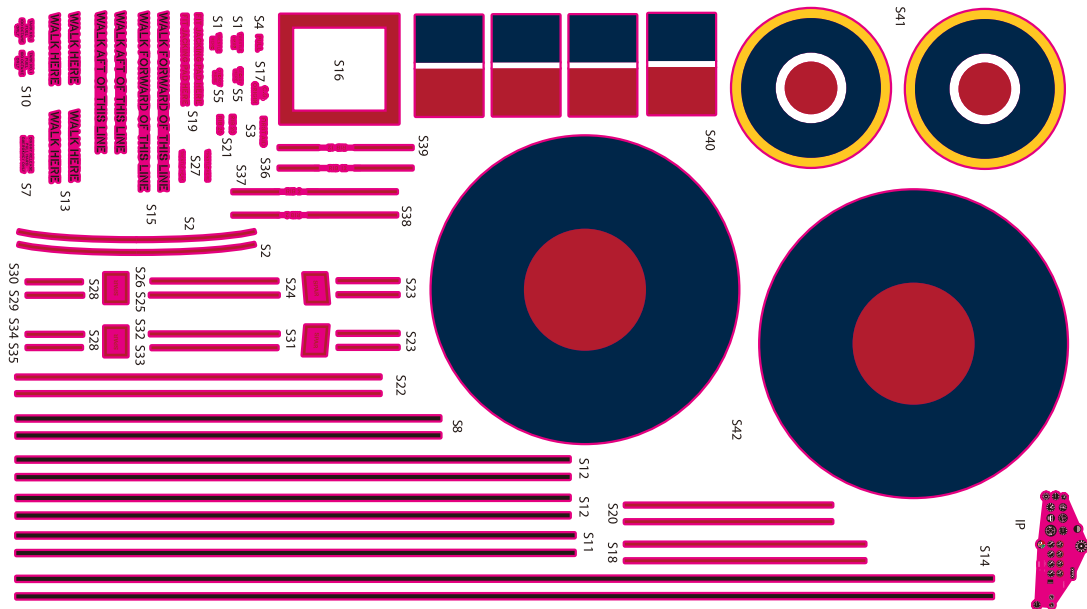


Part G

Decals

Avro Lancaster 1/48

HK Models

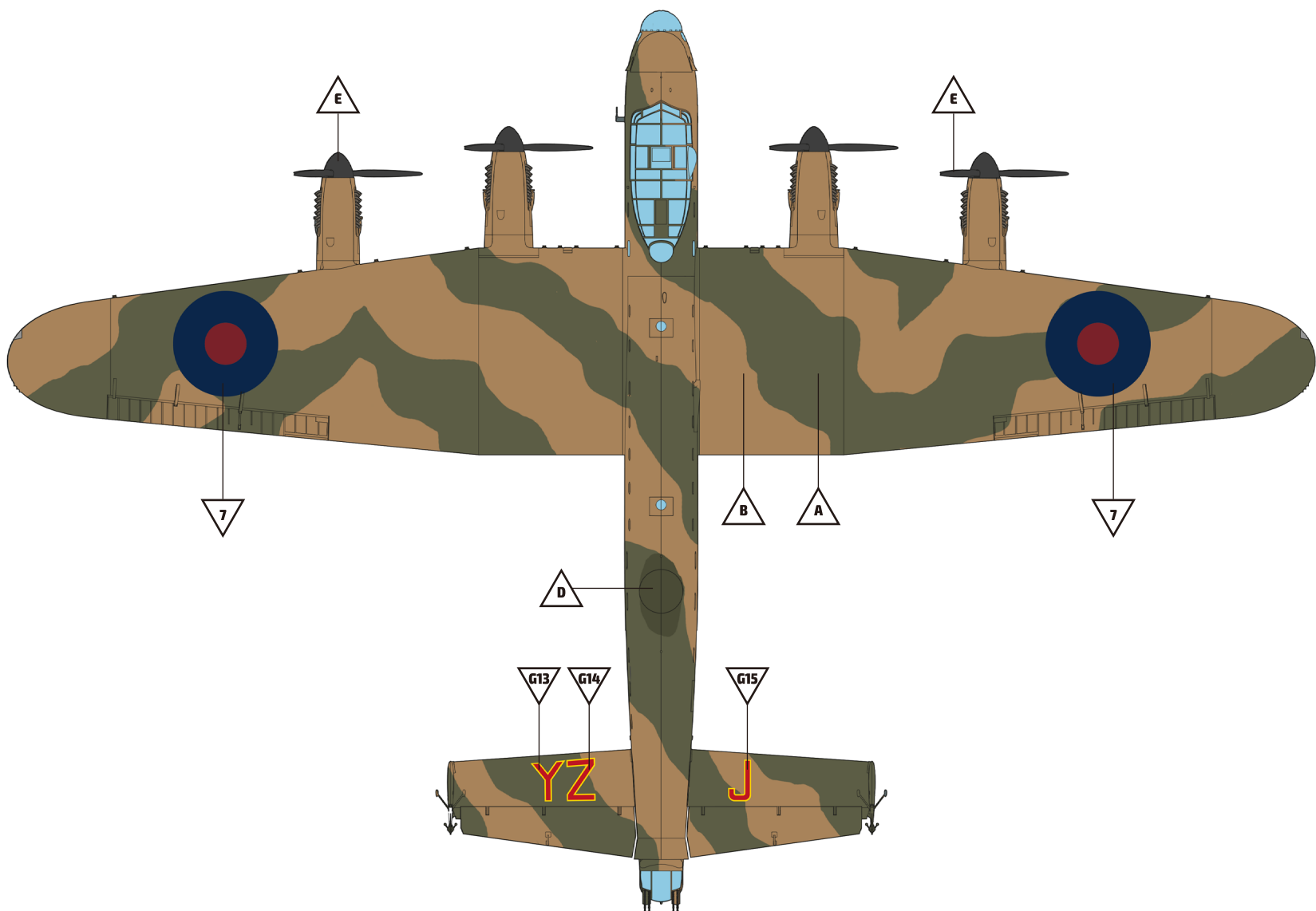
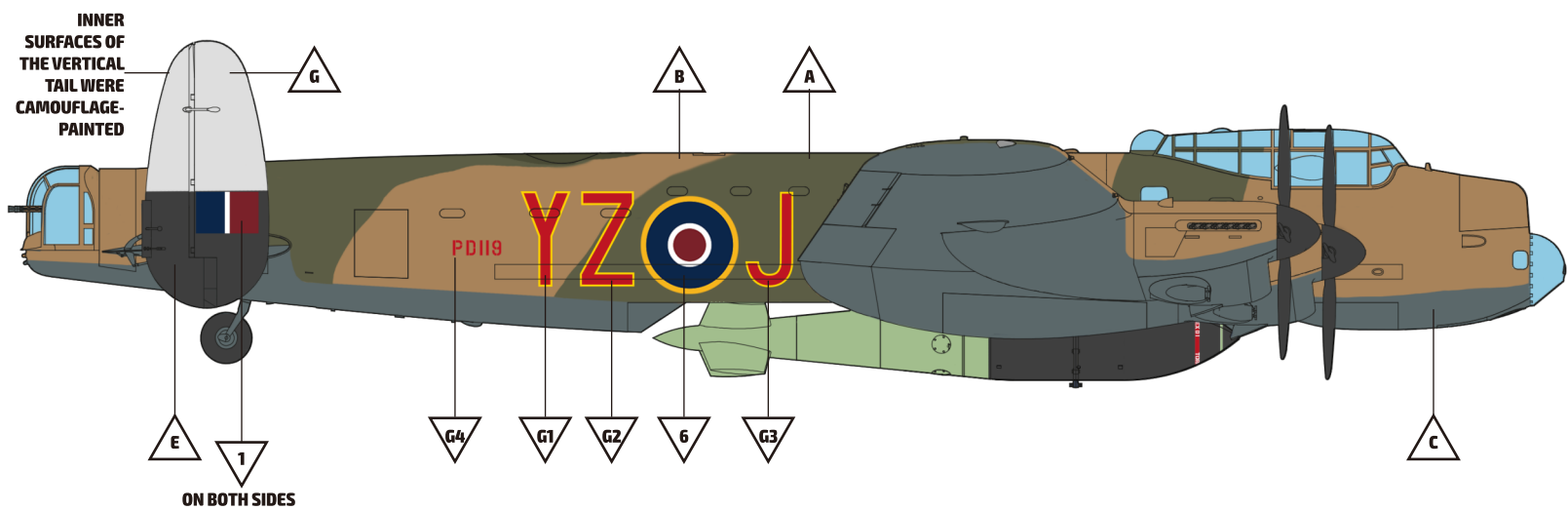


Avro Lancaster B Mk.I Special "Grand Slam"
HK Models 01F007

MARKING

A

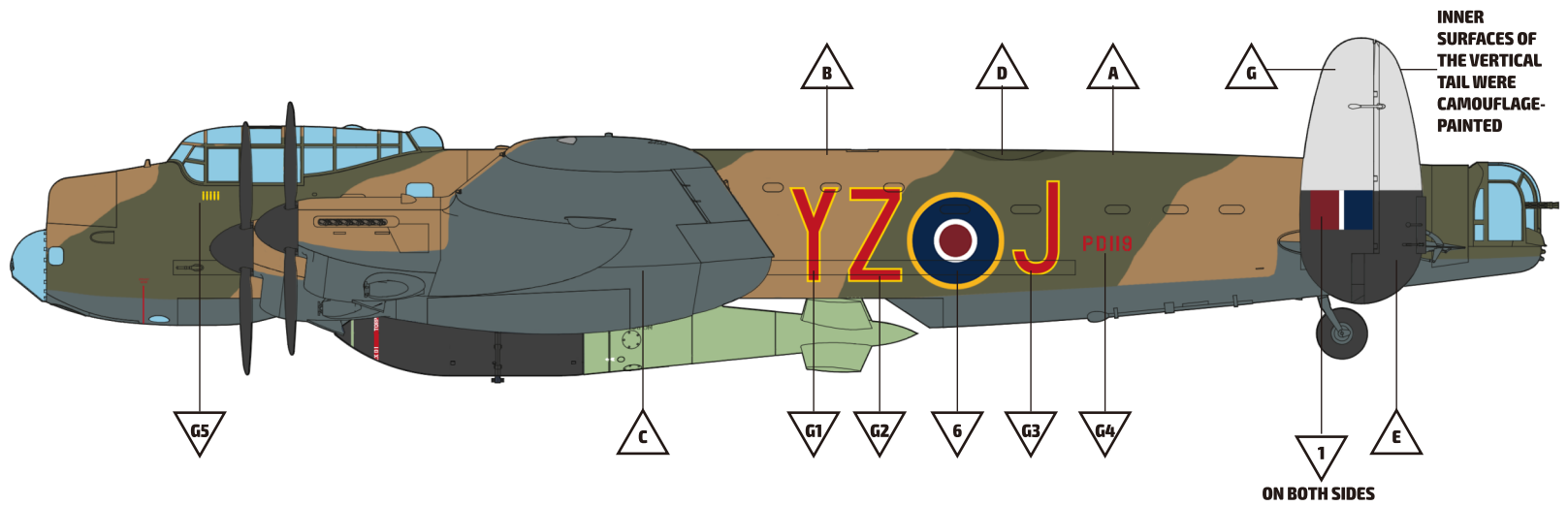
B Mk.I Special, PD119/YZ-J, No.617 Sqn. RAF, Woodhall Spa, UK, April 1945



MARKING

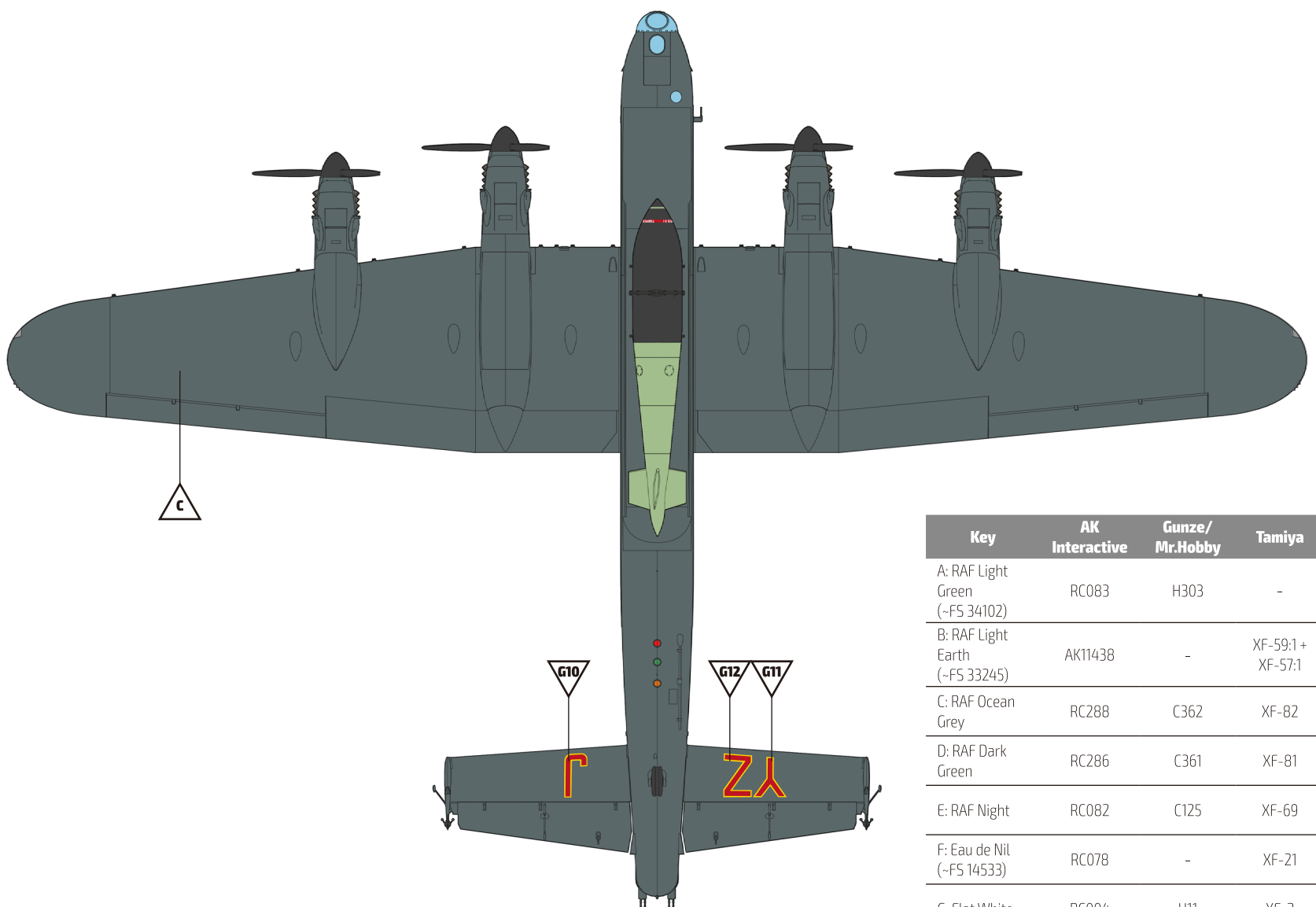
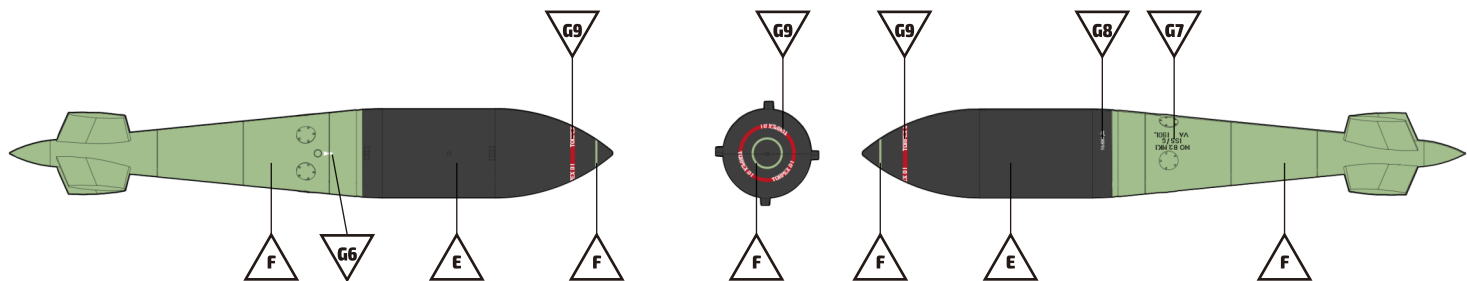
A

B Mk.I Special, PD119/YZ-J, No.617 Sqn. RAF, Woodhall Spa, UK, April 1945



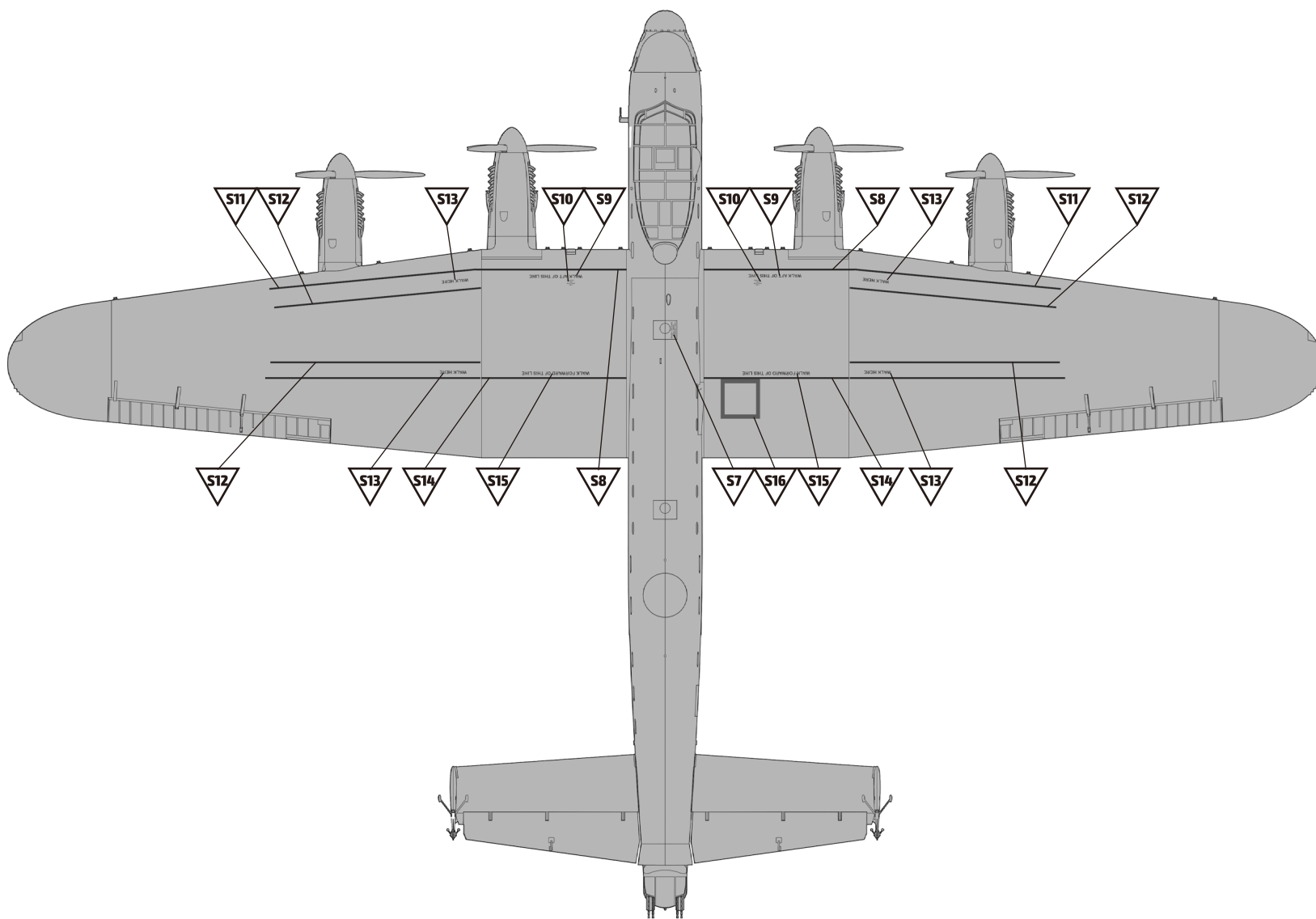
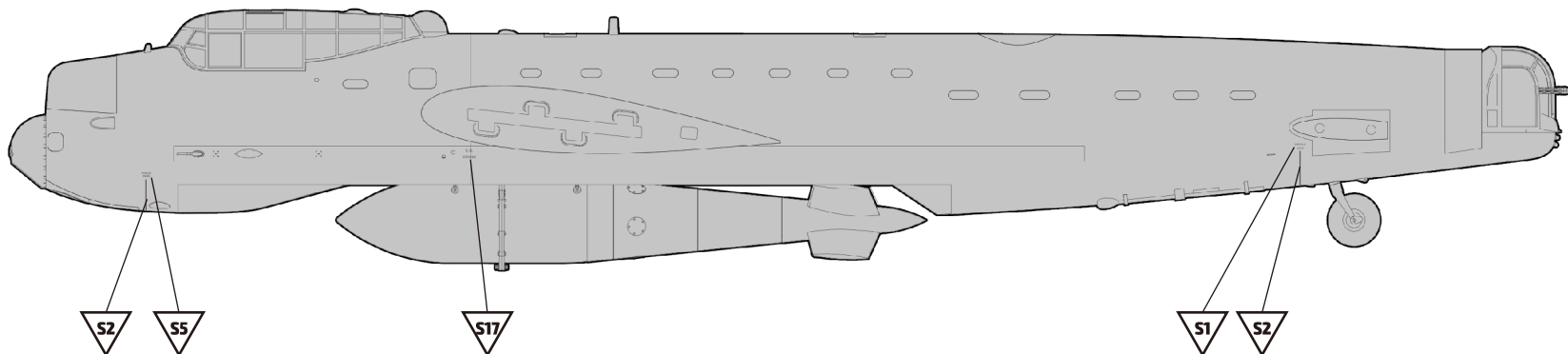
INNER SURFACES OF THE VERTICAL TAIL WERE CAMOUFLAGE-PAINTED

ON BOTH SIDES

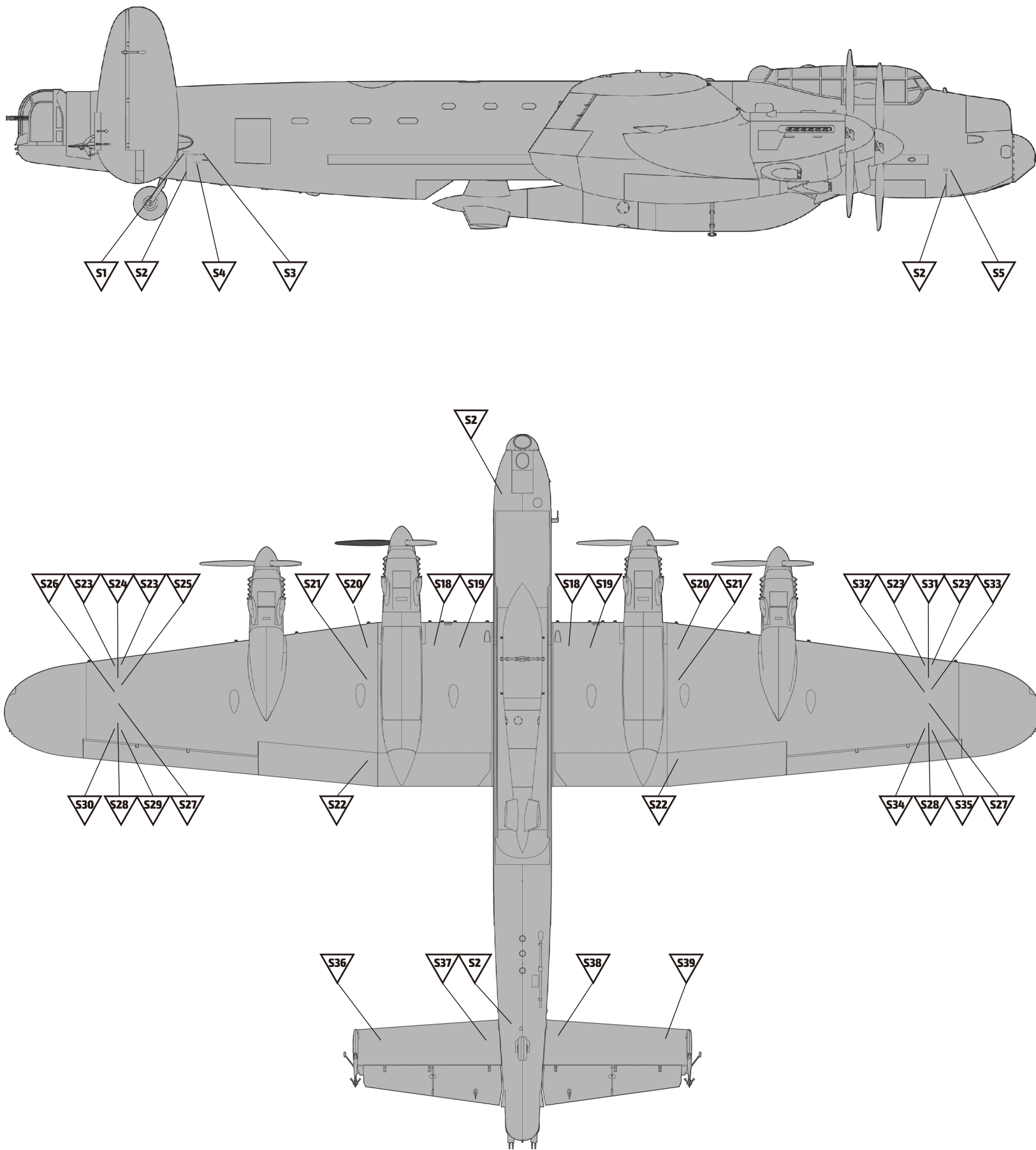


Key	AK Interactive	Gunze/Mr.Hobby	Tamiya
A: RAF Light Green (-FS 34102)	RC083	H303	-
B: RAF Light Earth (-FS 33245)	AK11438	-	XF-59:1 + XF-57:1
C: RAF Ocean Grey	RC288	C362	XF-82
D: RAF Dark Green	RC286	C361	XF-81
E: RAF Night	RC082	C125	XF-69
F: Eau de Nil (-FS 14533)	RC078	-	XF-21
G: Flat White	RC004	H11	XF-2

Common Stencils Placement Guide



Common Stencils Placement Guide



Colour Guide

Key	AK Interactive	Tamiya	Gunze/Mr.Hobby
A:RAF Light Green (-FS 34102)	RC 083		H303
B:RAF Light Earth (-FS 33245)	AK 11438	XF-59:1 +XF-57:1	
C:RAF Ocean Grey	RC 288	XF-82	C362
D:RAF Dark Green	RC 286	XF-81	C361
E:RAF Night	RC 082	XF-69	C125
F:Eau De Nil (-FS 14533)	RC 078	XF-21	
G:Flat White	RC 004	XF-2	H11
H:Flat Red	RC 006	XF-7	H13
I:Aluminium	AK 479	XF-16	MC 128
J:Gunmetal	RC 015	XF-10	MC 124
K:Olive Drab	RC 259	XF-62	H52
L:Steel	AK 476	XF-56	MC 213
M:Brass	AK 475	XF-12	MC 219
N:Flat Yellow	RC 008	XF-3	H413
O:Rubber Black	RC 022	XF-85	H77
P:Dark Green Leather	AK 2063	XF-8	H6
Q:Tan	RC 109	XF-78	H27
R:Brass	RC 293	XF-71	C364