



1/32

B-25H MITCHELL Gunship



Big 1/32 Scale • Authentic Surface Details • Over 500,000 Rivets • Highly Detailed Wright R2600 Cyclone Engines • Detailed Cockpit & Bomb Bay • Colorful Markings

Plastic model kit containing 563 parts

Wing span : 643mm Length : 498mm

The B25H is a variant of the North American B25 Medium Bomber that is armed to the teeth. Intended for low altitude work, against shipping and ground targets, the B25H has no bombsight. Instead the nose is covered over, with armored plating between it and the rest of the plane, and an arsenal of weapons added. Four .50cal machine guns were added to the nose, and four more on the side of the fuselage, giving eight .50 cal machine guns at the command of the pilot. In addition, a 75mm cannon is installed, loaded manually, allowing an airborne field gun at the disposal of the B25. In addition to the six other defensive guns mounted in a top turret, a tail mount, and two waist mounts. Thus a grand total of 14 .50cal machine guns, over 5,600 rounds of .50cal machine gun ammunition, and a 75mm field gun are mounted on this bird. Plus B25H can carry eight 5" rockets and a full bomb load too.

CAUTION

- * When you use glue or paint, do not use near a open flame, and use in a well-ventilated room.
- * Symbols such as ① refer to the color number of Mr. COLOR and TAMIYA paints. Glue and paint are not included.
- * When you take parts off the runner, use plastic nippers and trim excess plastic with a cutter or a file.
- * See the list below for the meaning of symbols.



BE CAREFUL



REMOVE



CEMENT TOGETHER



PLEASE WAIT FOR A FEW MINUTES UNTIL DAY



MAKE 2pcs



OPEN HOLE



DO NOT CEMENT



INSTANT GLUE FOR METAL



BEND



FILL HOLE



APPLY DECAL

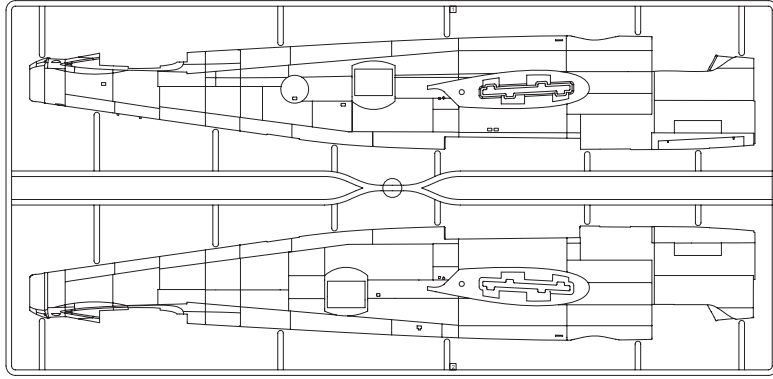


OPTIONAL

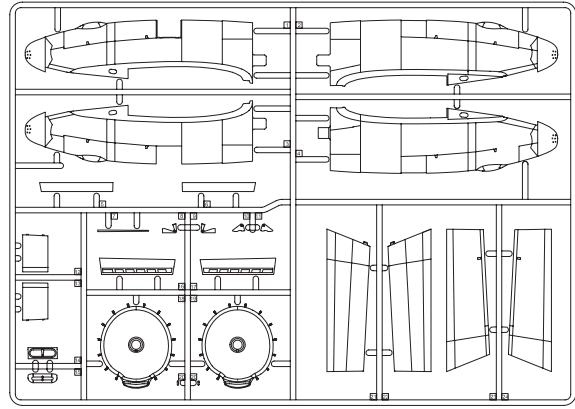
These instructions were written based on an experienced modeler's recommendations. We do understand that there are one or two logical assembly sequences, and each and every modeler has their own preferences for the order that they build and paint their models. Therefore, we recommend strongly that every proud owner of this giant kit study the instructions thoroughly, then follow their own preferences for the sequence of assembling and painting the model. Like many scale plastic kits on the market, this kit is built around subassemblies. This is the best way to facilitate maximum ease of assembly and painting. As the kit tries to depict the gear down position as accurately as possible, please take special care and follow the instructions carefully when assembling the landing gear. Finally we must advise you to be very careful when using sharp tools such as modeling knives, drills and cutters. Photo-etch pieces are included so also be very careful with the use of super glue. It will stick your fingers together if used improperly. If that should happen, don't attempt to tear your fingers apart by brute force. Use de-bonder from the super glue manufacturer or nail polish remover to dissolve the glue or simply let your fingers stick together for a short period of time and they should come apart with the help of the metabolism of the human skin. There are many model paints on the market, but being an environmentally-conscious brand, we recommend using acrylics, a water-based paint that does the least harm to the environment. This is a complex kit that will provide hours and hours of enjoyment. However, this kit is meant for modelers aged 14 and over as it contains many small and sharp parts, so please keep it out of the reach of small children.

Parts in box

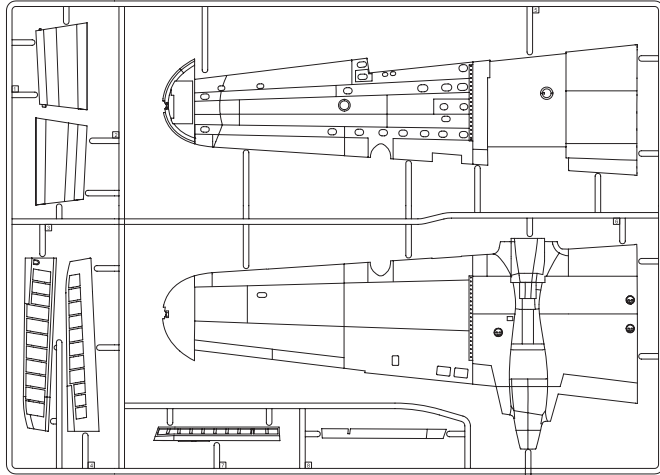
A



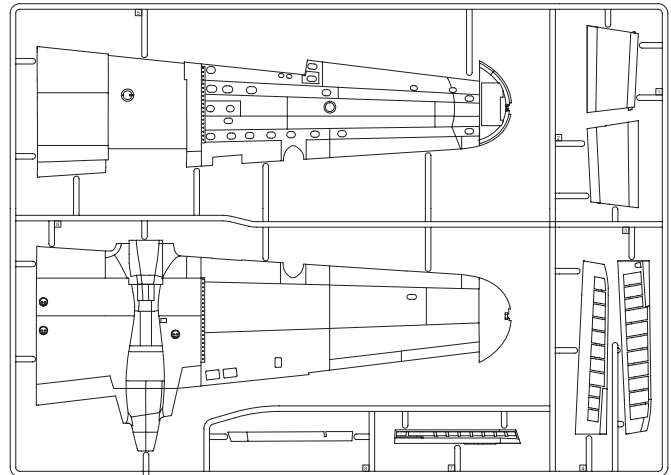
D



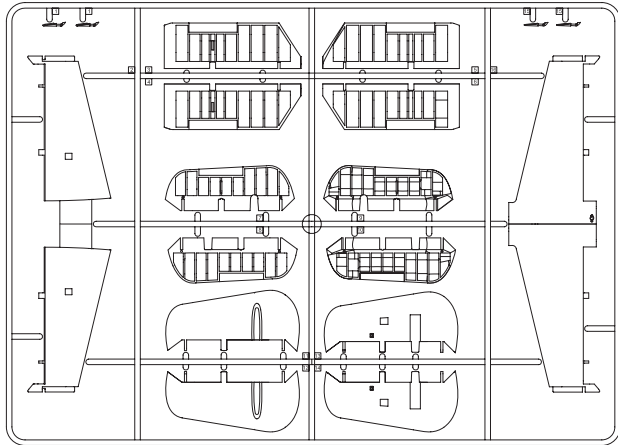
B



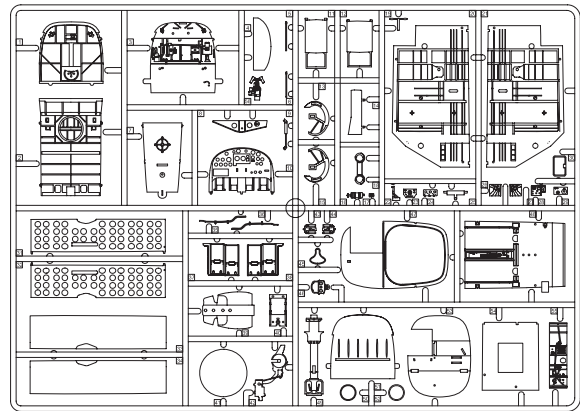
C



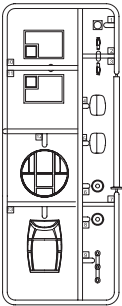
E



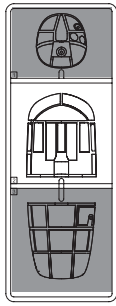
M



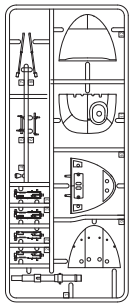
F



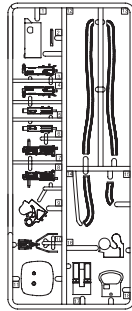
G



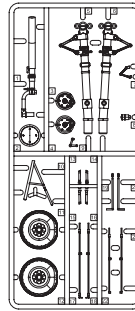
V



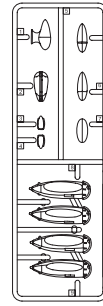
I



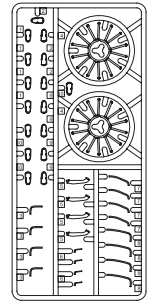
J



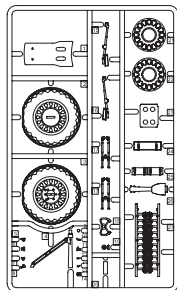
K



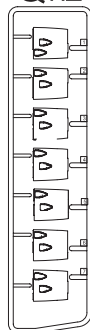
Ox4



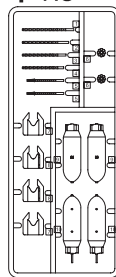
Nx2



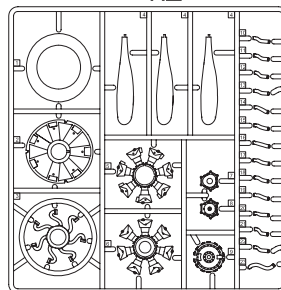
Qx2



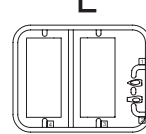
Px3



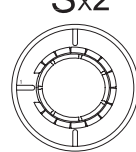
Rx2



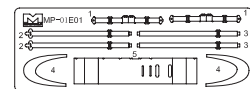
L



Sx2



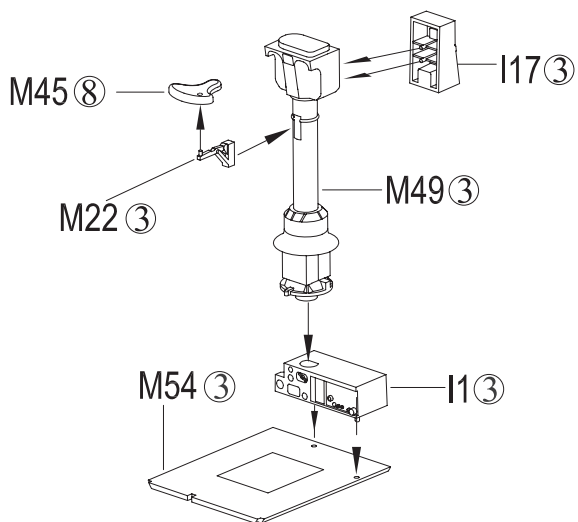
EP



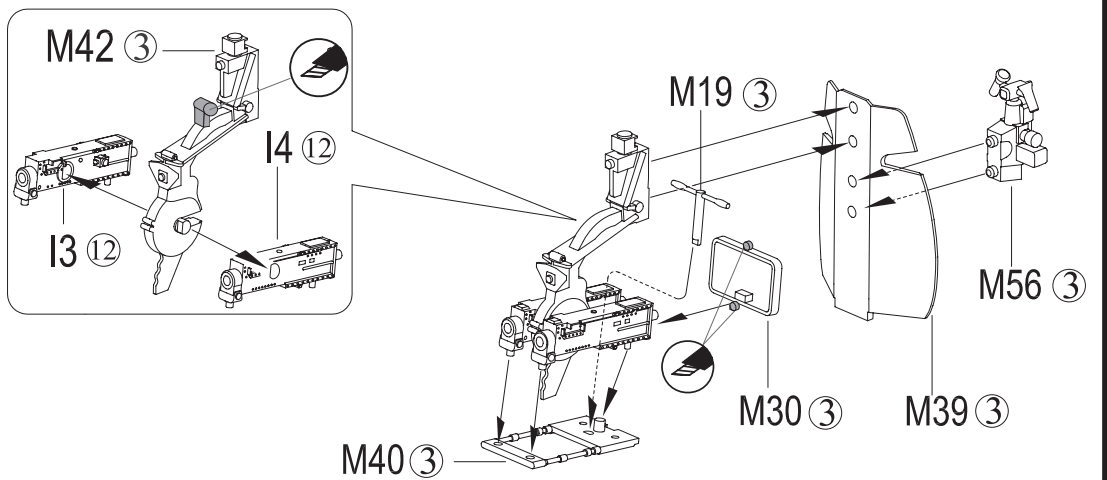
Colour Guide

	Colour	FS 595C	Hobby Color	Tamiya Acrylics
①	British Dark Green	FS34096	H309	XF61
②	Olive Drab	FS34088	H304	XF62
③	Interior Green	FS34151	H58	XF58
④	Flat White		H11	XF2
⑤	Aluminium		H8	XF16
⑥	Tire Black	FS27038	H77	XF18
⑦	Flat Black	FS37038	H12	XF1
⑧	Brown		H310	XF10
⑨	Clear Red		H90	XF27
⑩	Clear Green		H94	XF25
⑪	Clear Orange		H92	XF26
⑫	Gun Metal		H18	X10
⑬	Rust		H344	XF52

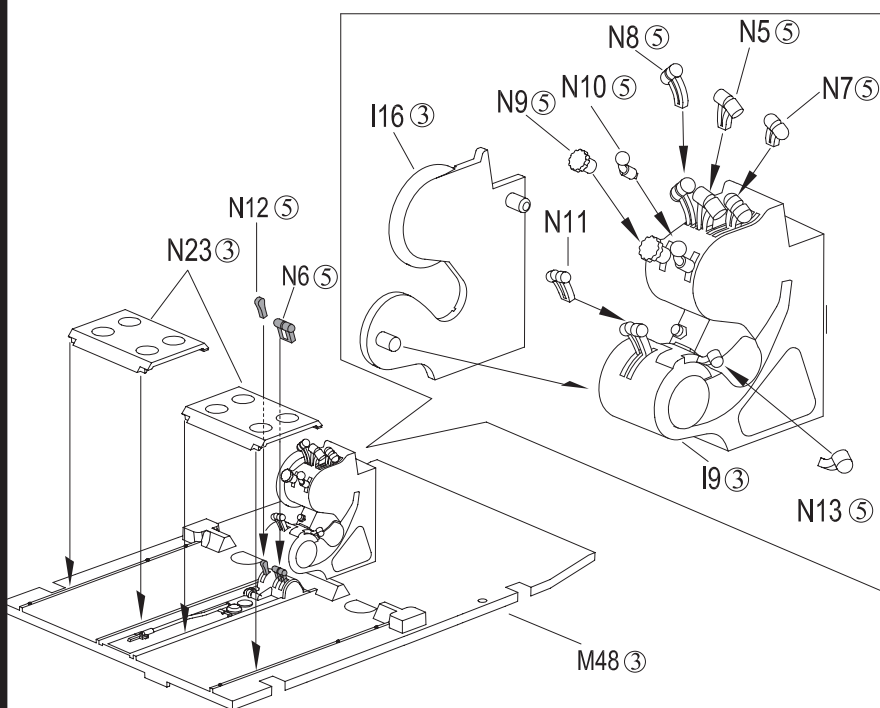
1 Upper gun turret column assembly



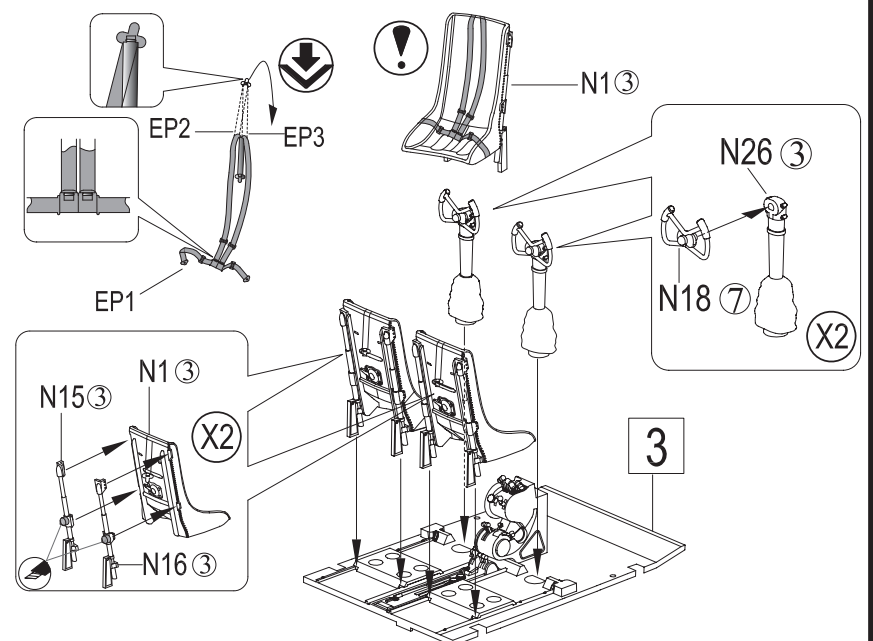
2 Tail gun assembly



3 Central pedestal assembly

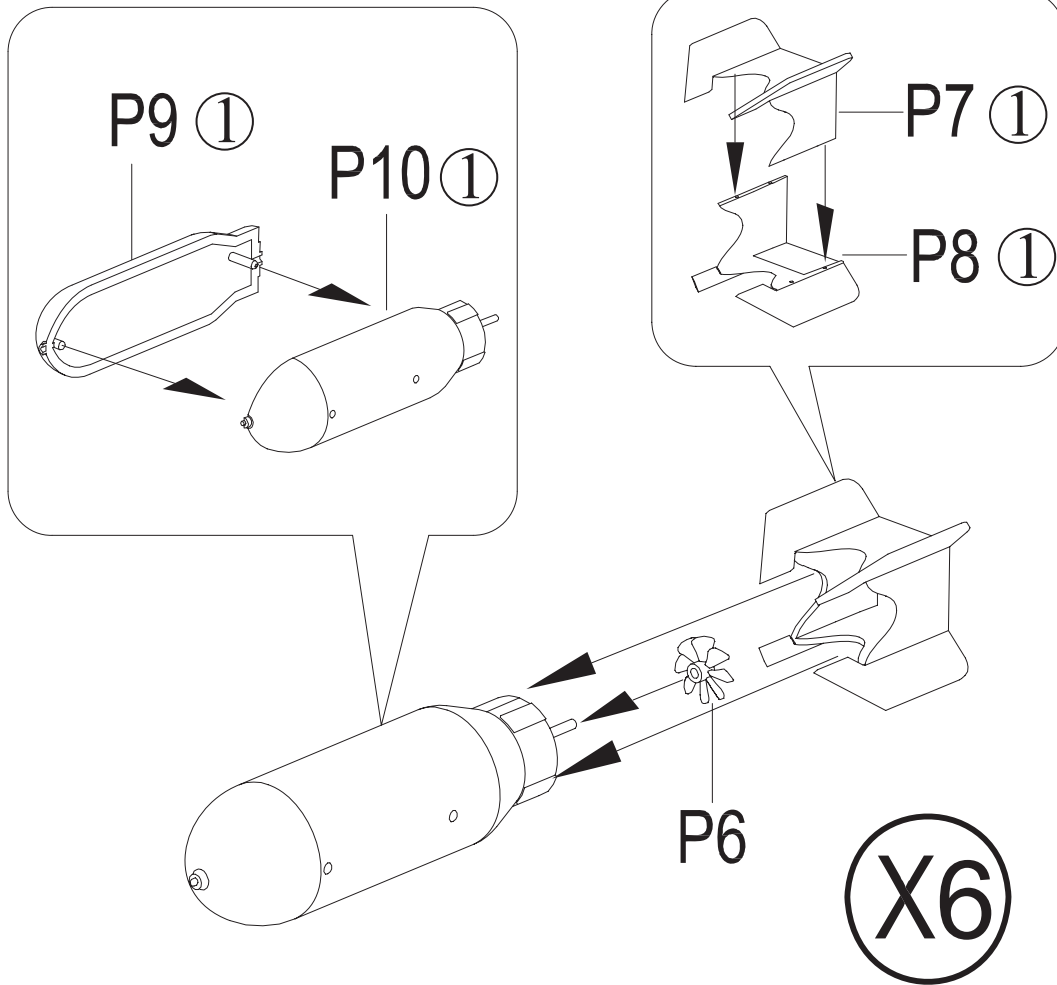


4 Seats and control columns assembly

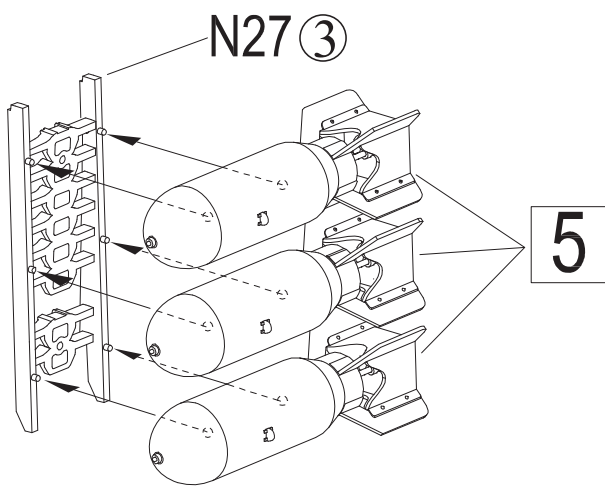


5

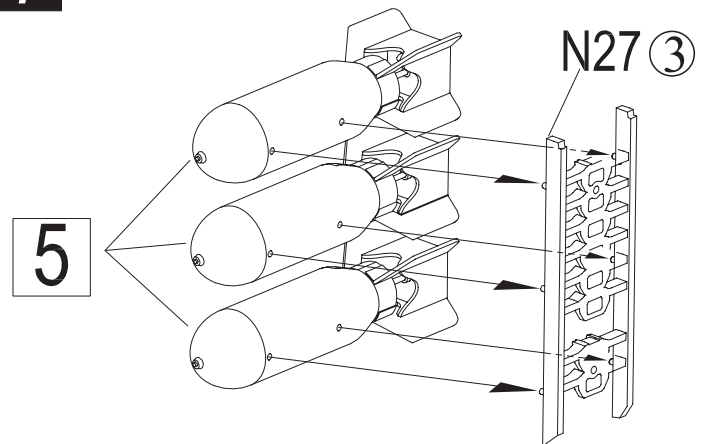
Bombs and bomb bay assembly



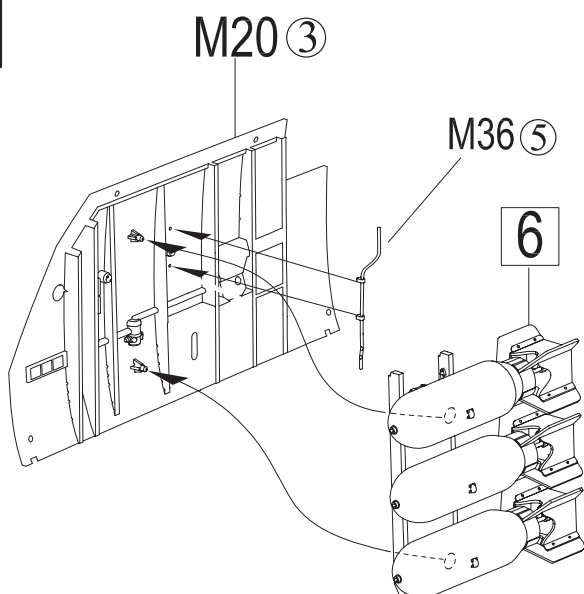
6



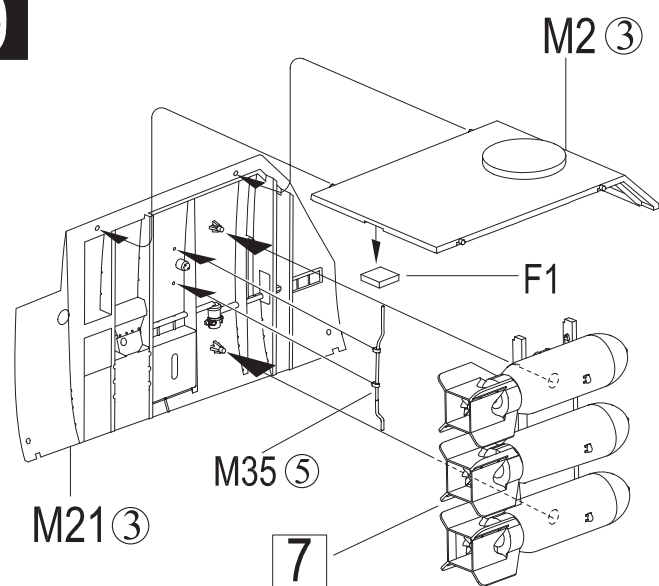
7



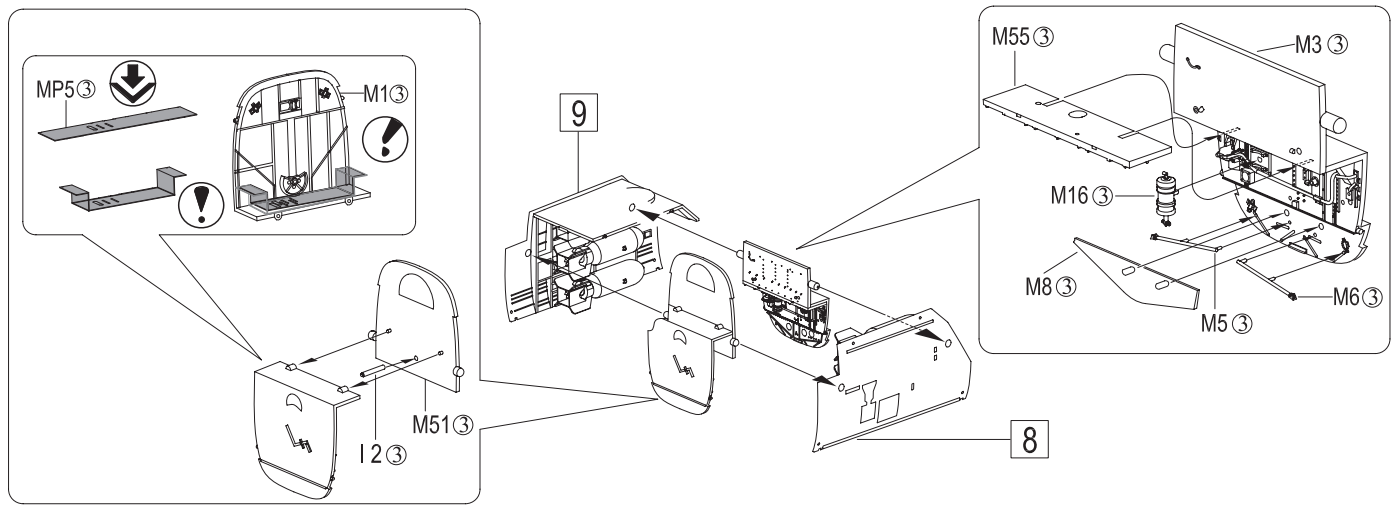
8



9

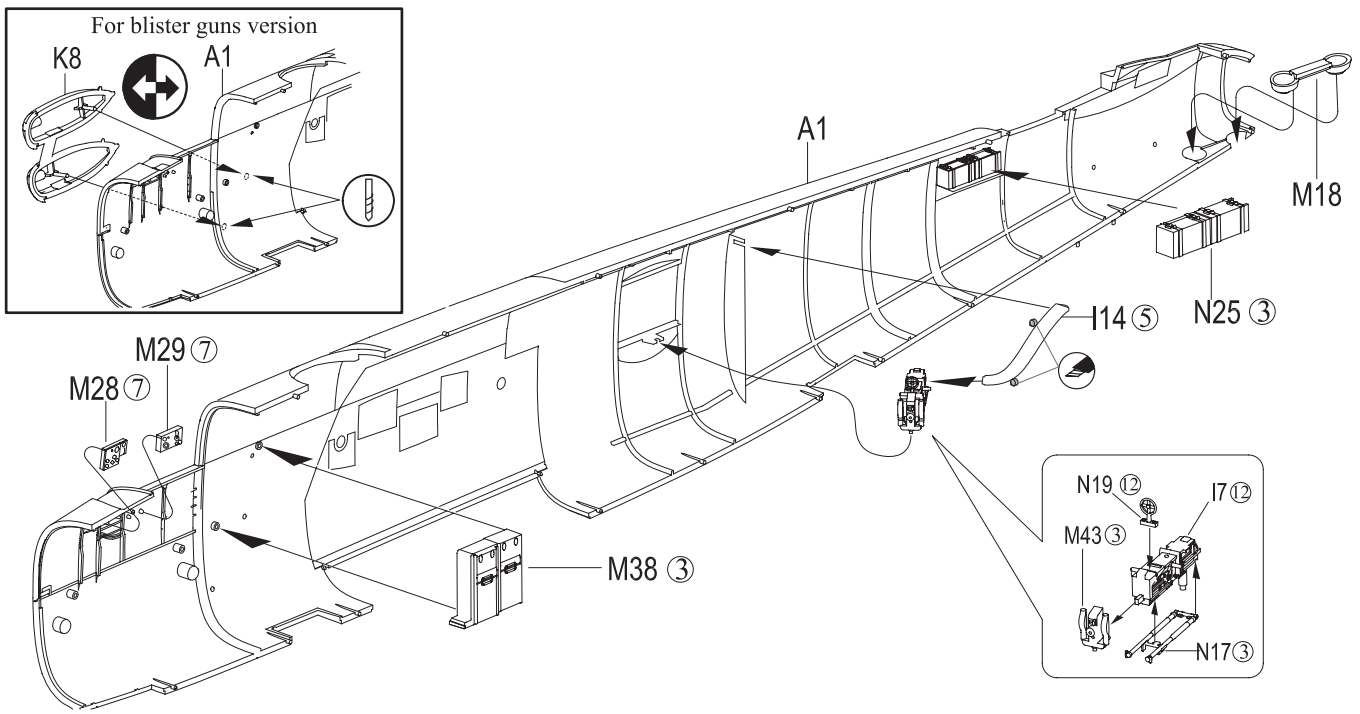


10



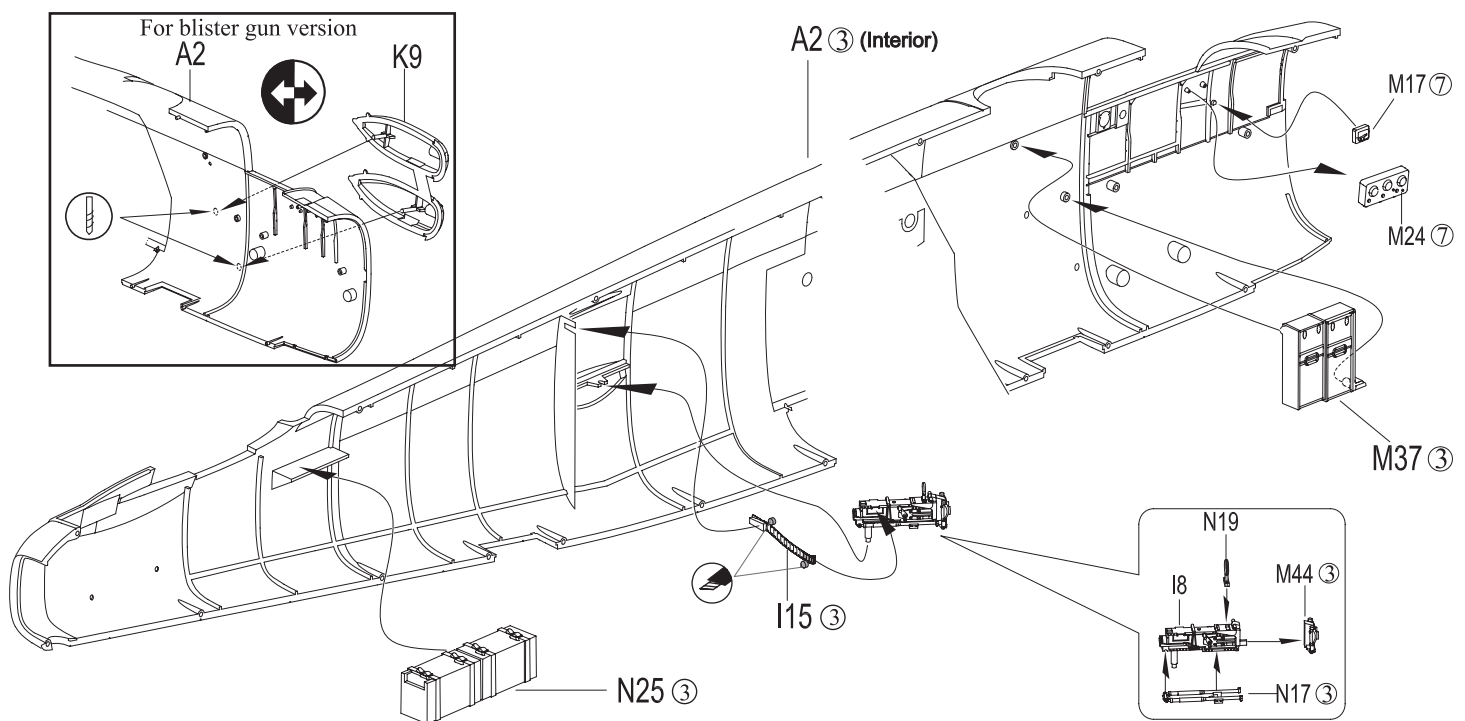
11

Right fuselage half interior assembly

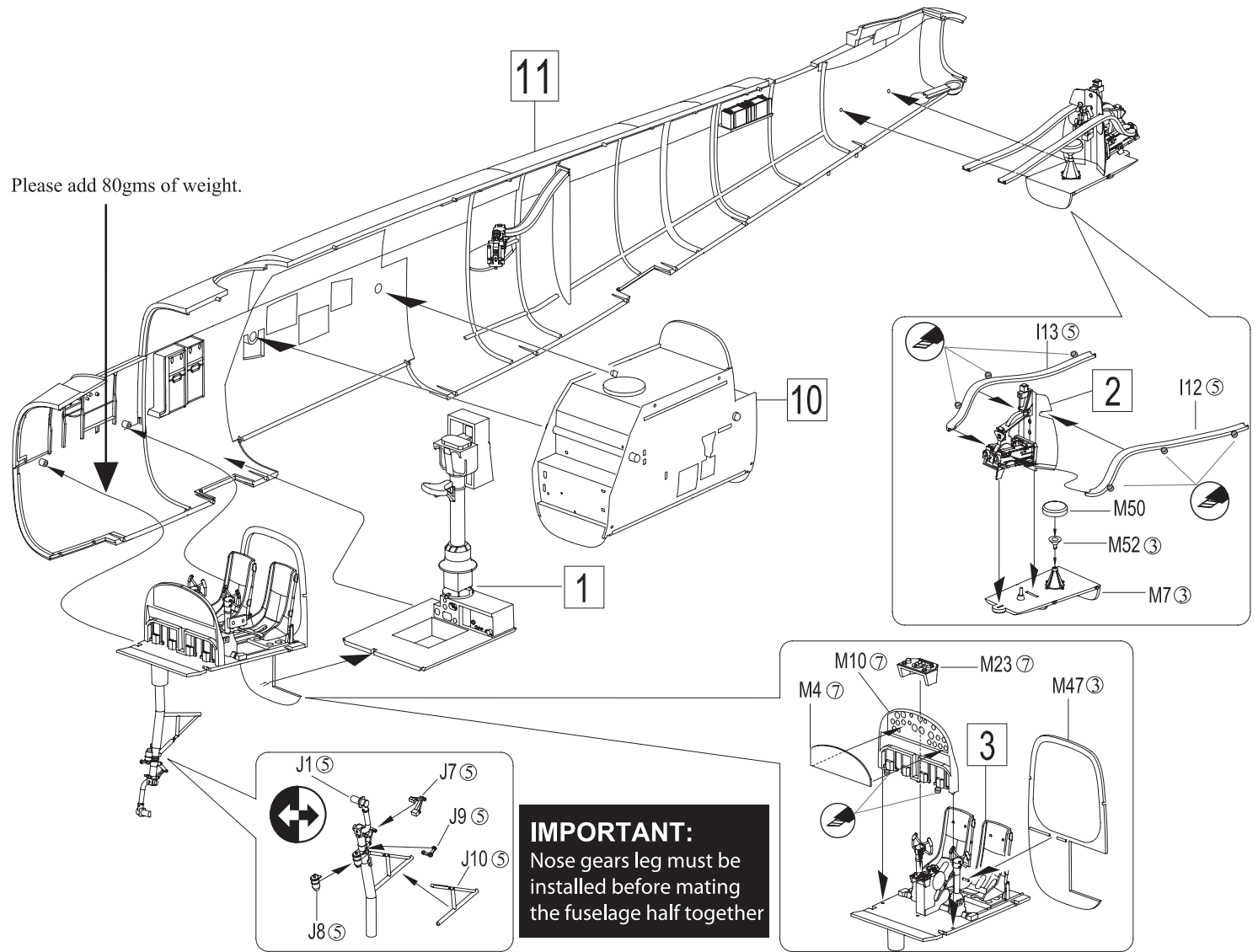


12

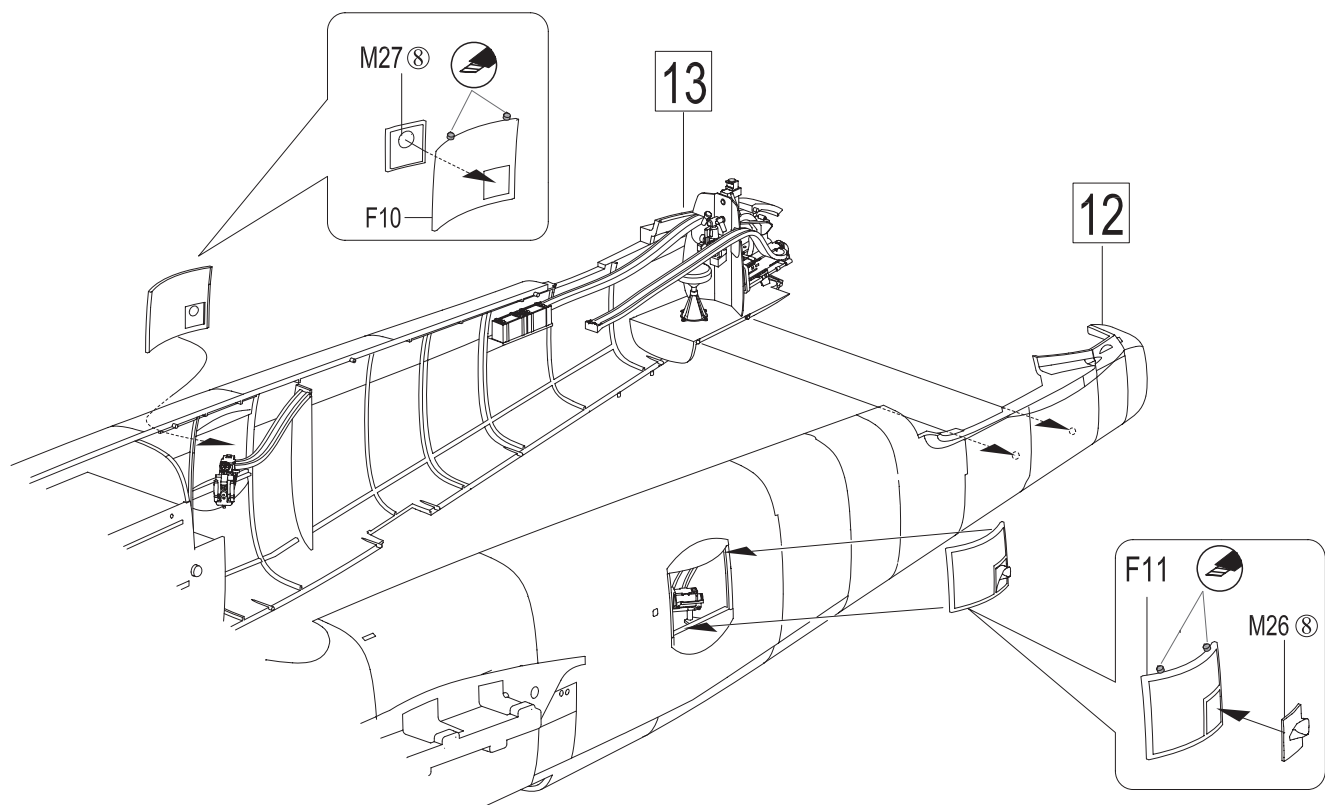
Left half fuselage interior assembly



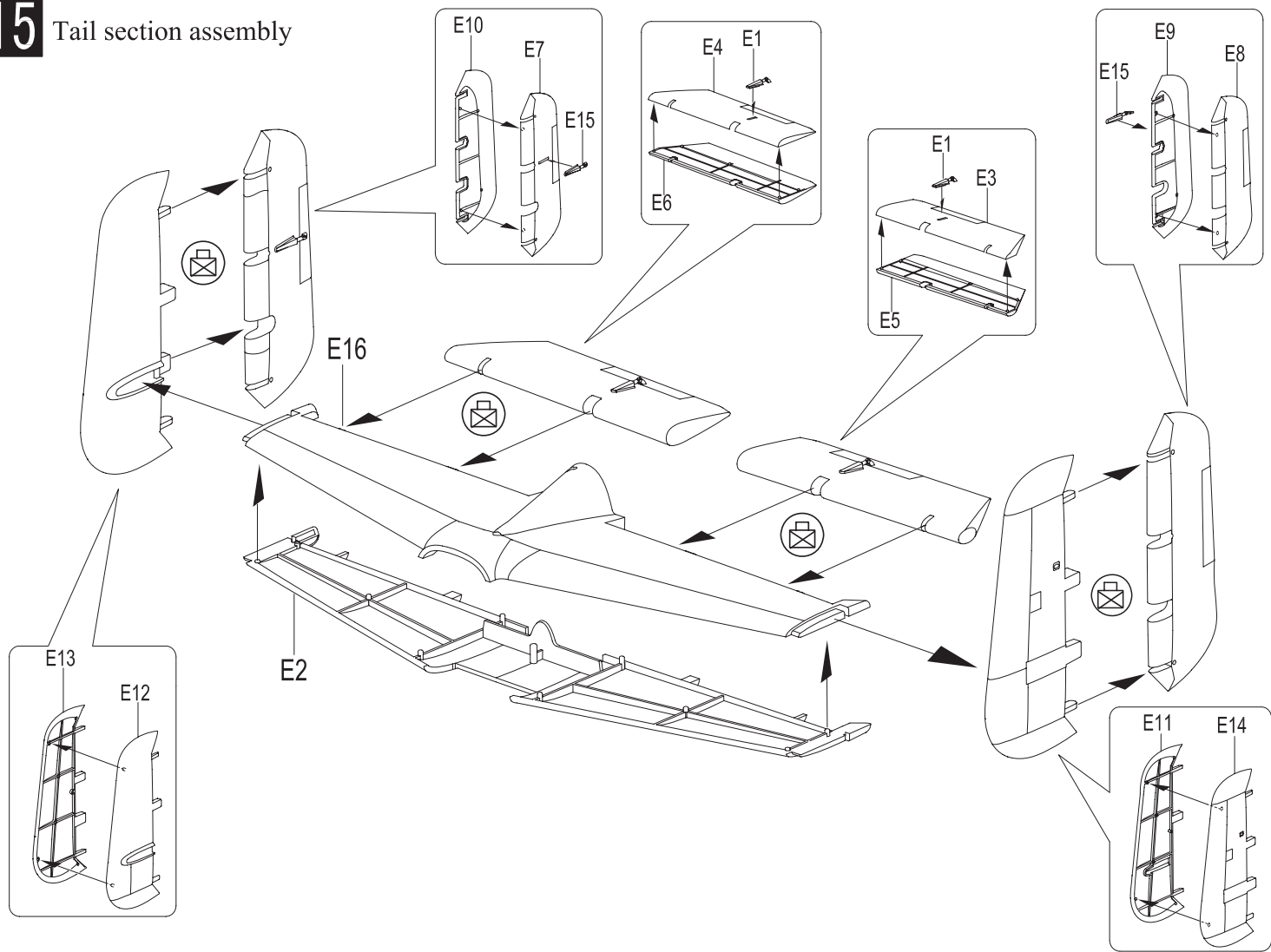
13 Fuselage main components assembly



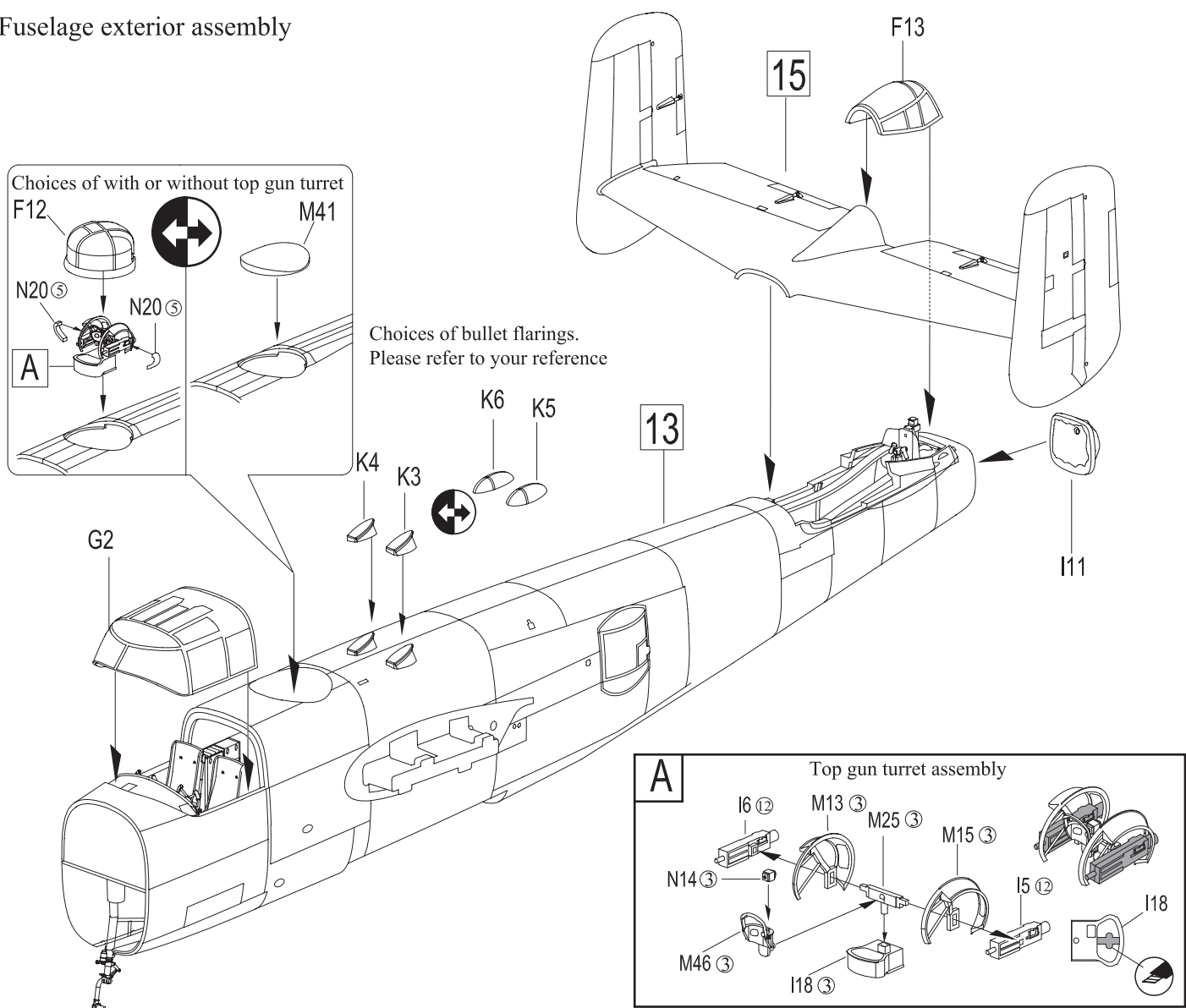
14 Mating the two fuselage half and installing of the waist gun windows



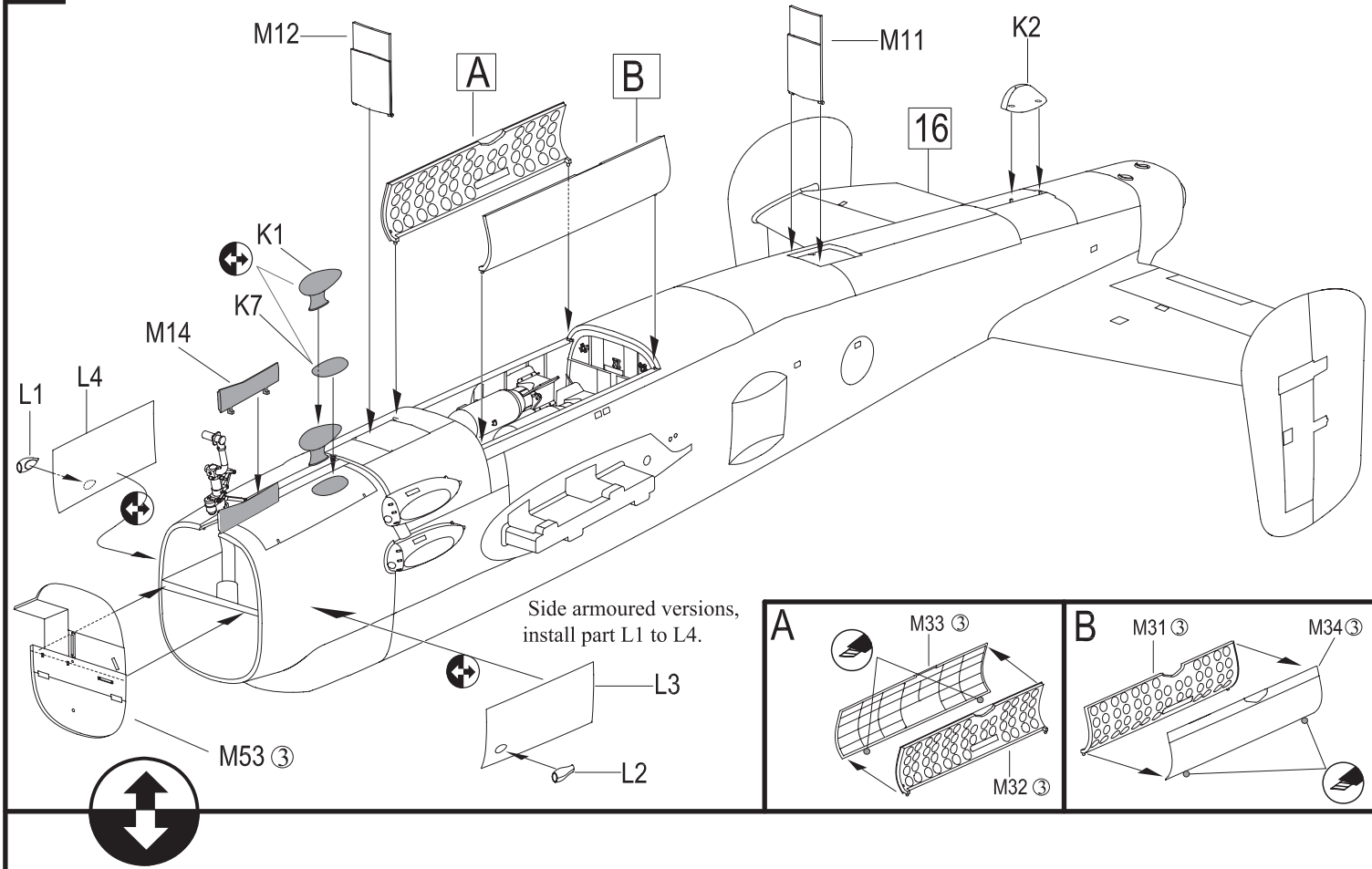
15 Tail section assembly



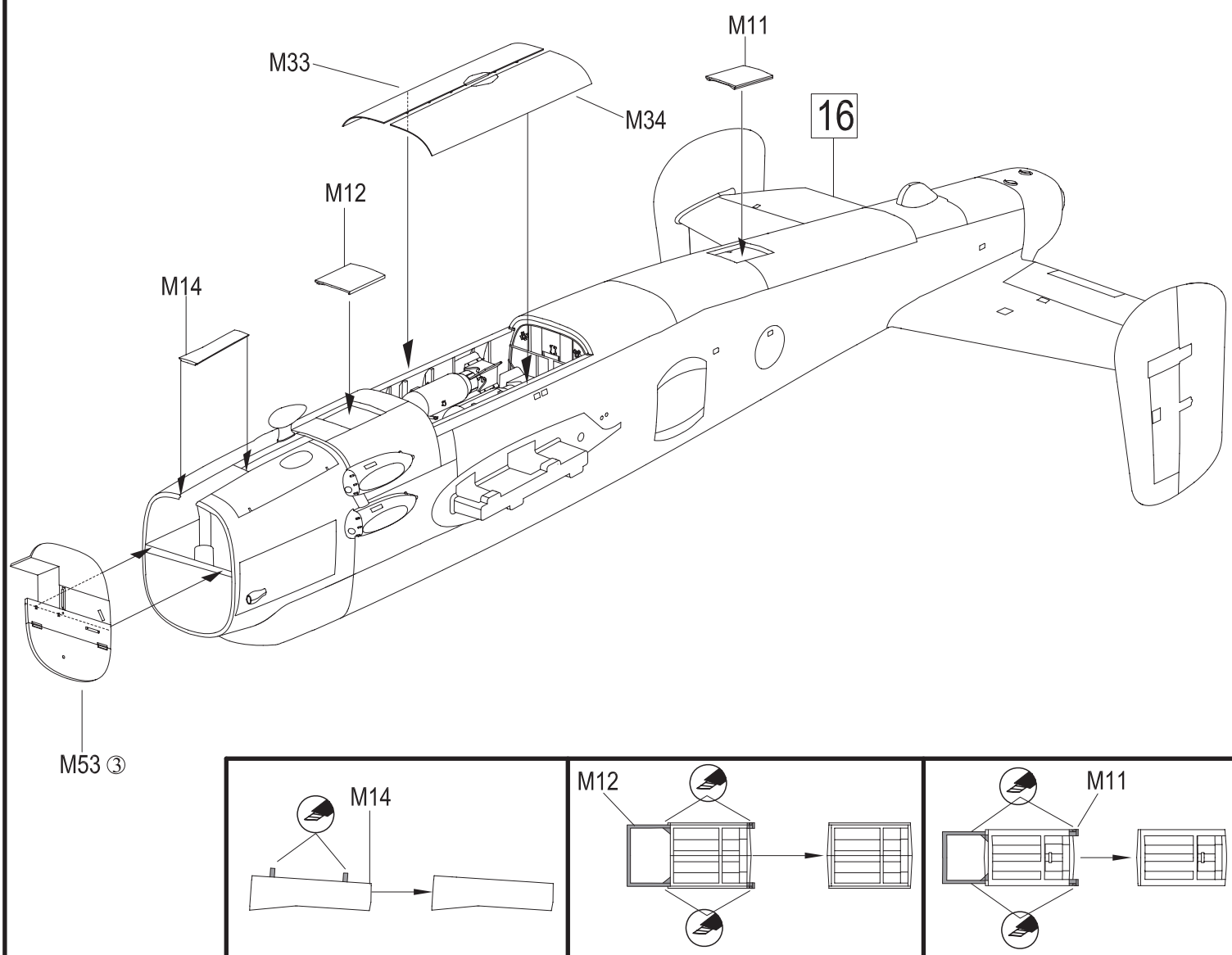
16 Fuselage exterior assembly



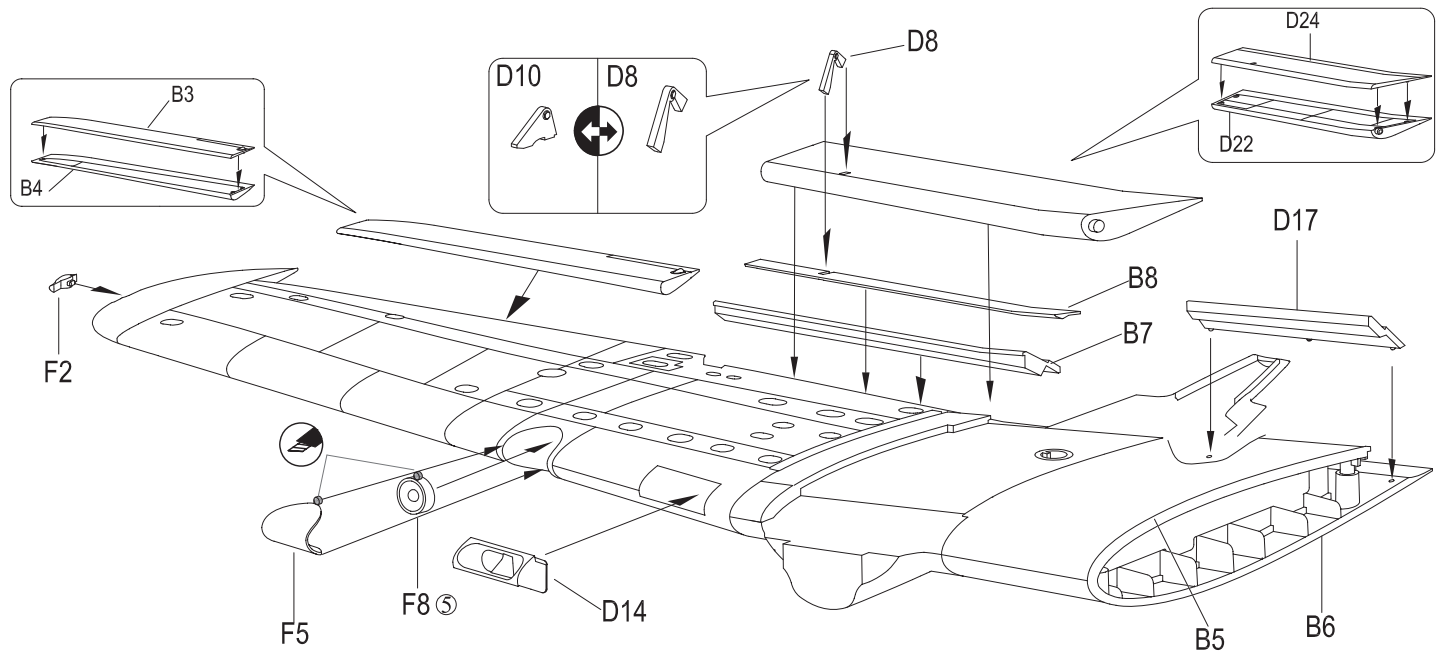
17 Fuselage bottom components assembly with bomb bay doors and entrances open



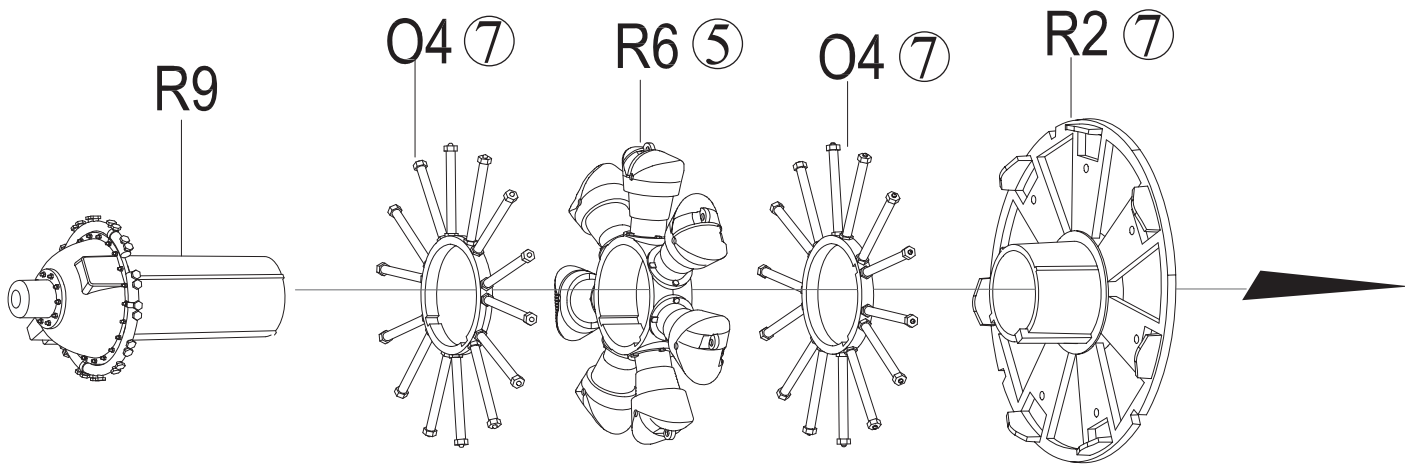
Fuselage bottom components assembly in flight version



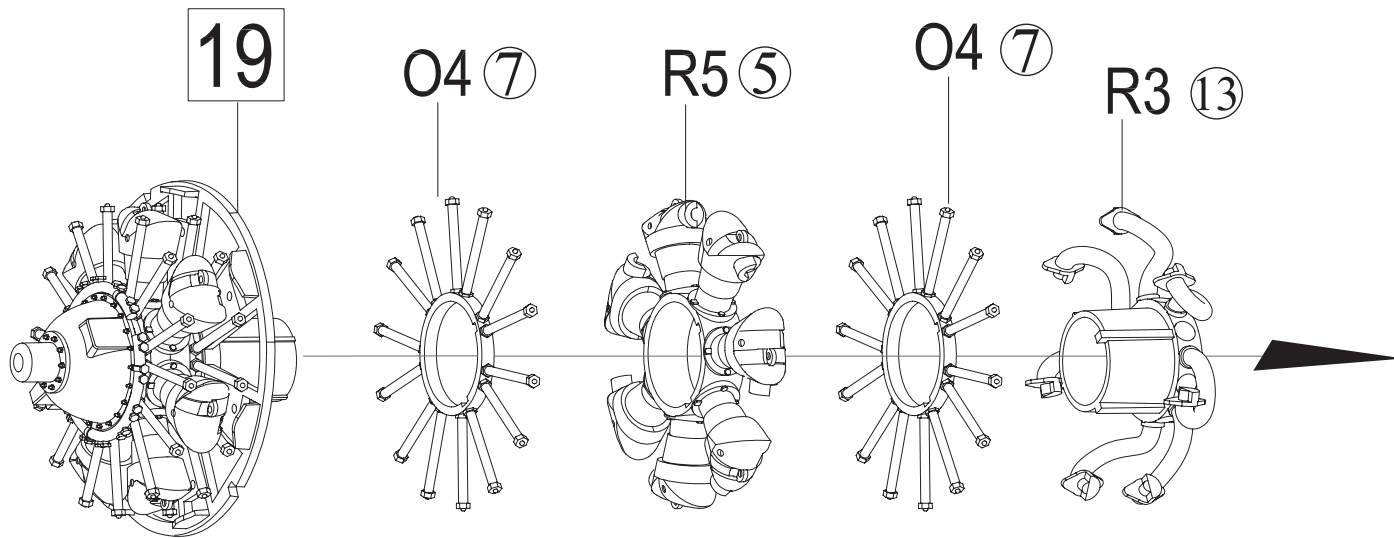
18 Left wing and control surfaces assembly



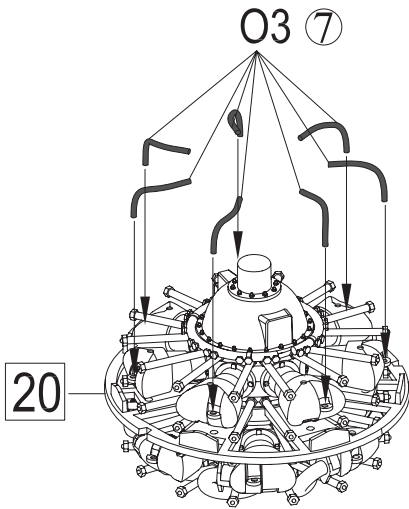
19 Engine assembly (Make two)



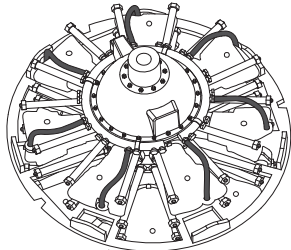
20



21

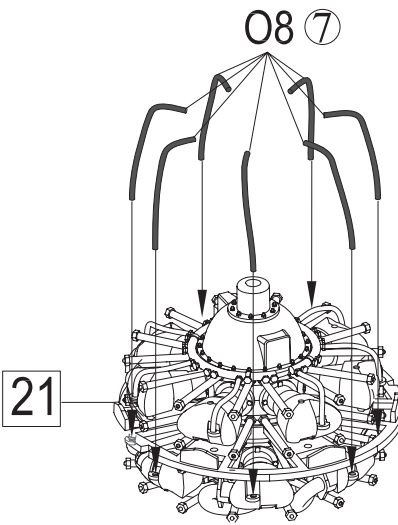


Please note the positions of part O3

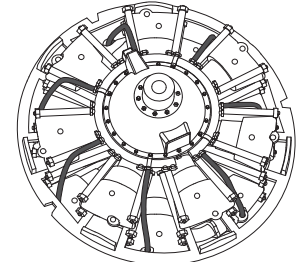


Top roll of cylinders

22

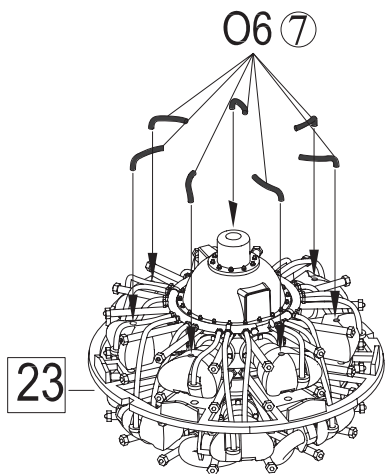


Please note the positions of part O8

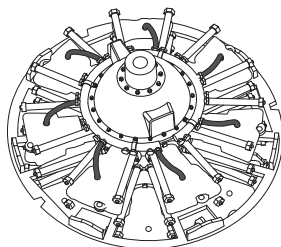


Back roll of cylinders

23

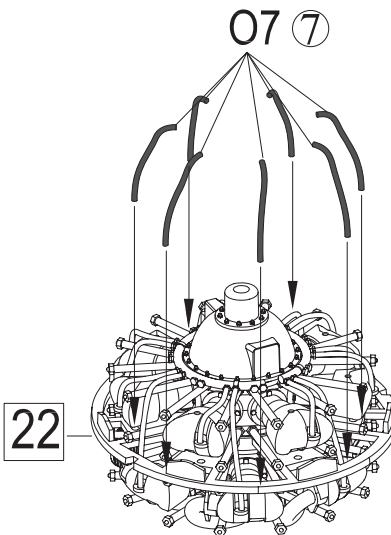


Please note the positions of part O6

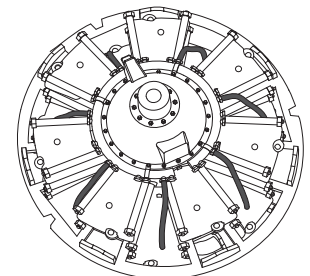


Front roll of cylinders

24

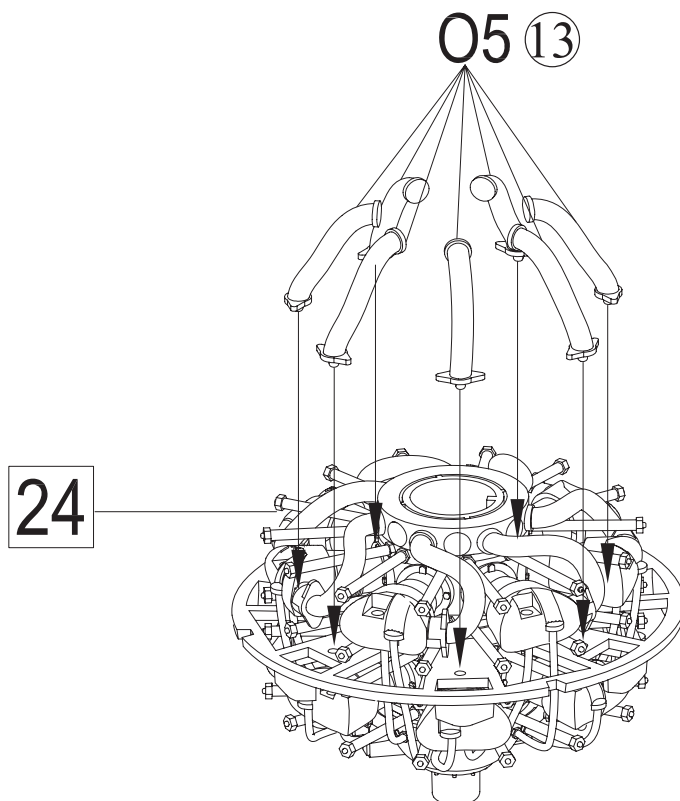


Please note the positions of part O7



Top roll of cylinders

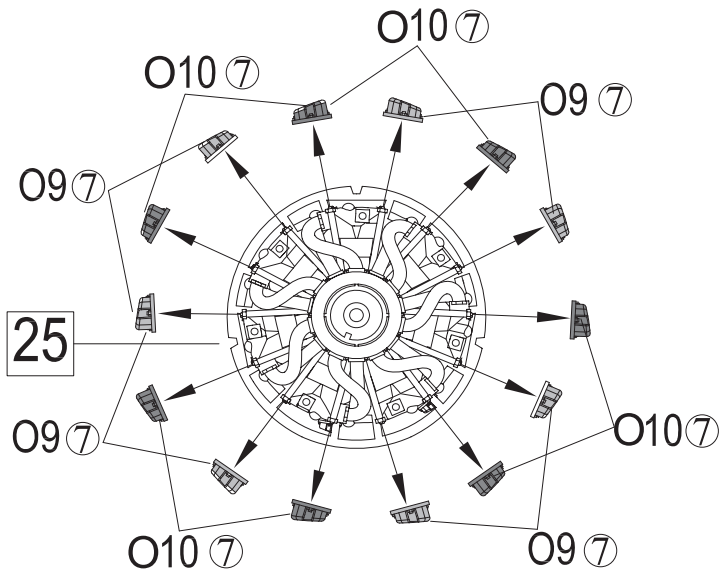
25 Engine's back



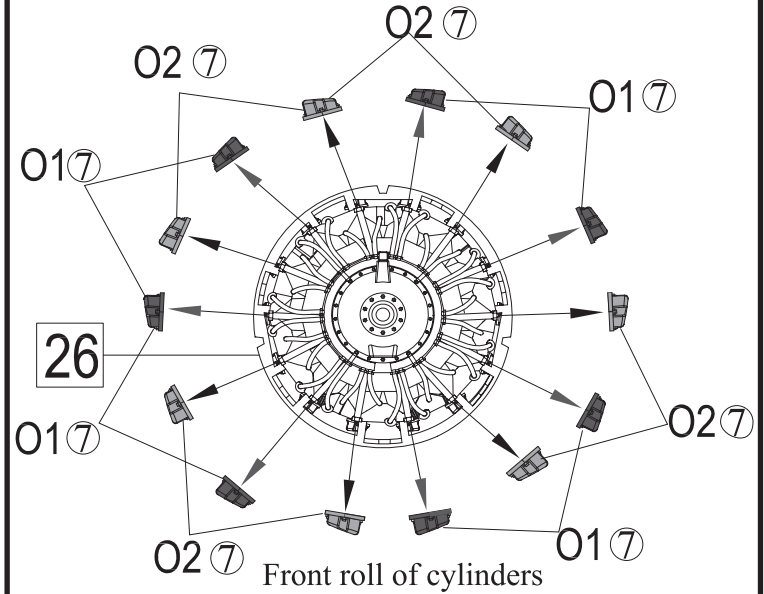
O5 (13)

24

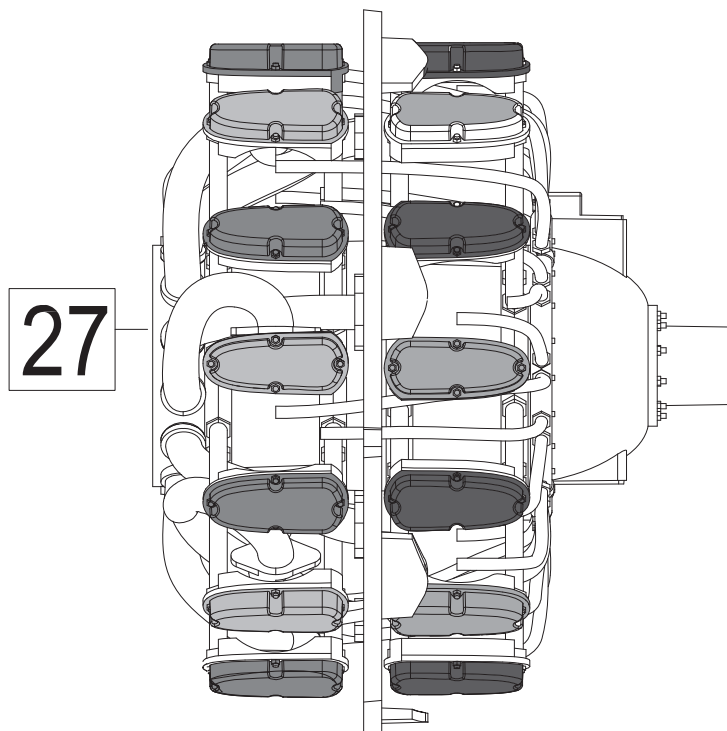
26 Push rod covers assembly (Back)



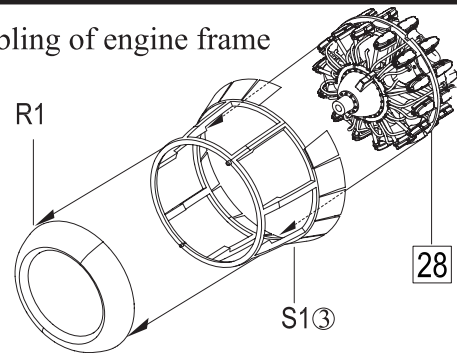
27 Push rod covers assembly (Front)



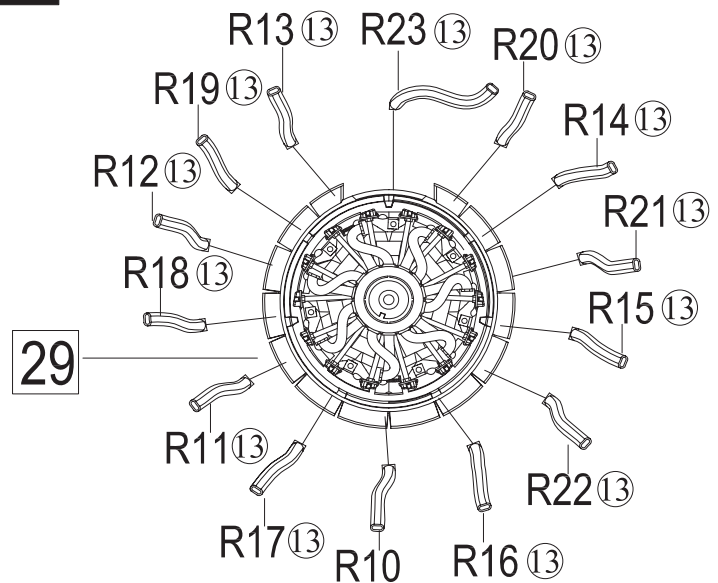
28 Please note the direction of push rod covers



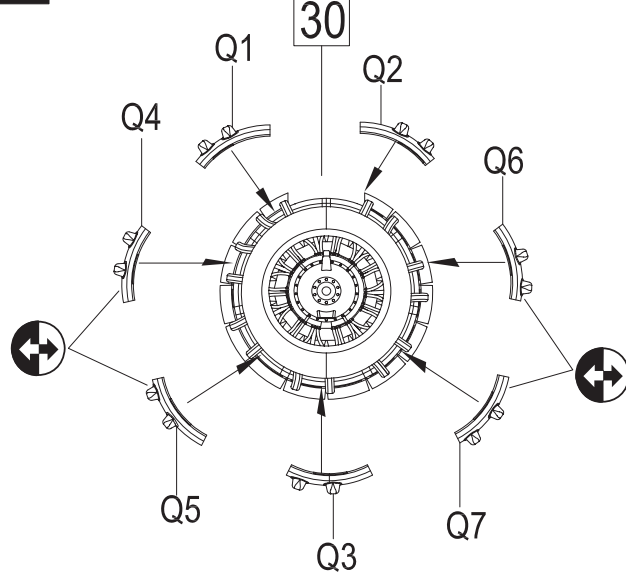
29 Assembling of engine frame



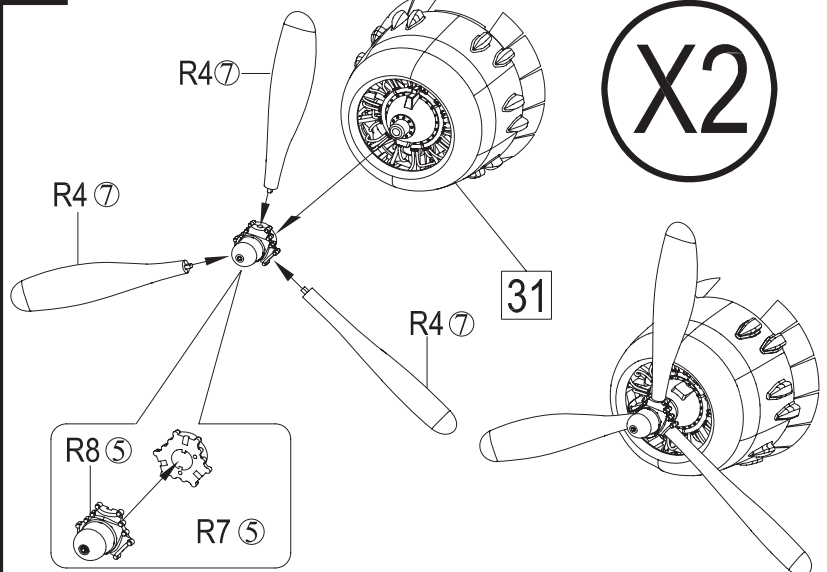
30 Assembling of exhaust stacks



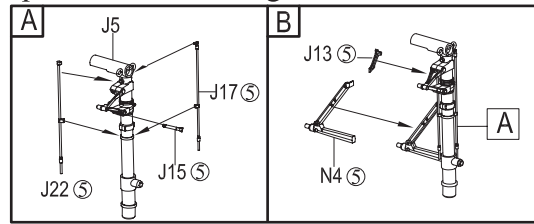
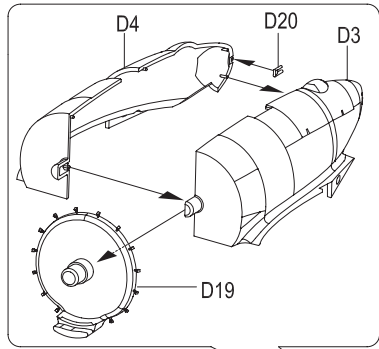
31 Engine nacelle covers assembly



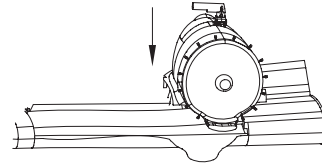
32 Propeller assembly (Make 2)



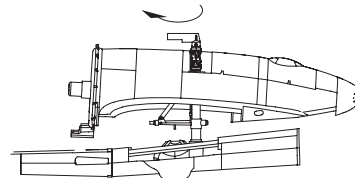
33 Assembling of engine nacell and landing gear in gear down position of left wing



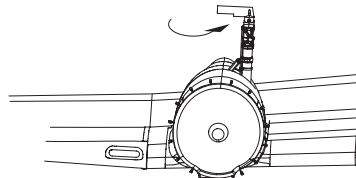
Procedures of installing the engine nacell



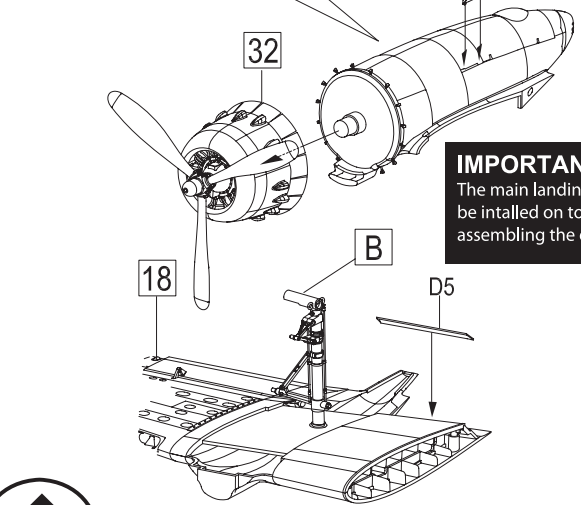
1. Pass the main gear strut through the opening of the engine nacell.



2. Turn the nacell side way so the supporting structure pass through the nacell.



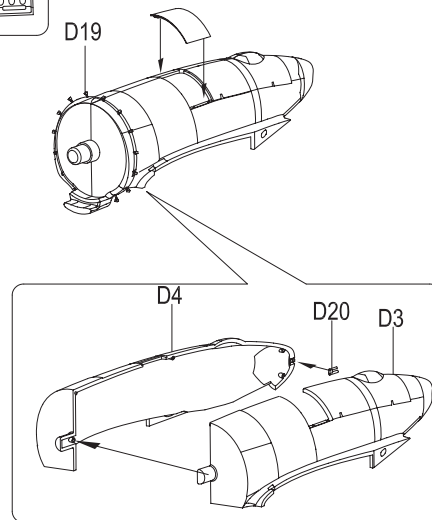
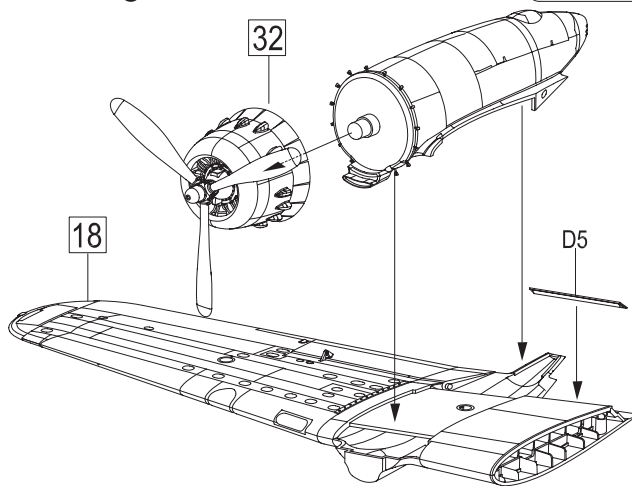
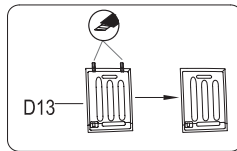
3. Turn the nacell back to the right direction and install on to the wing.



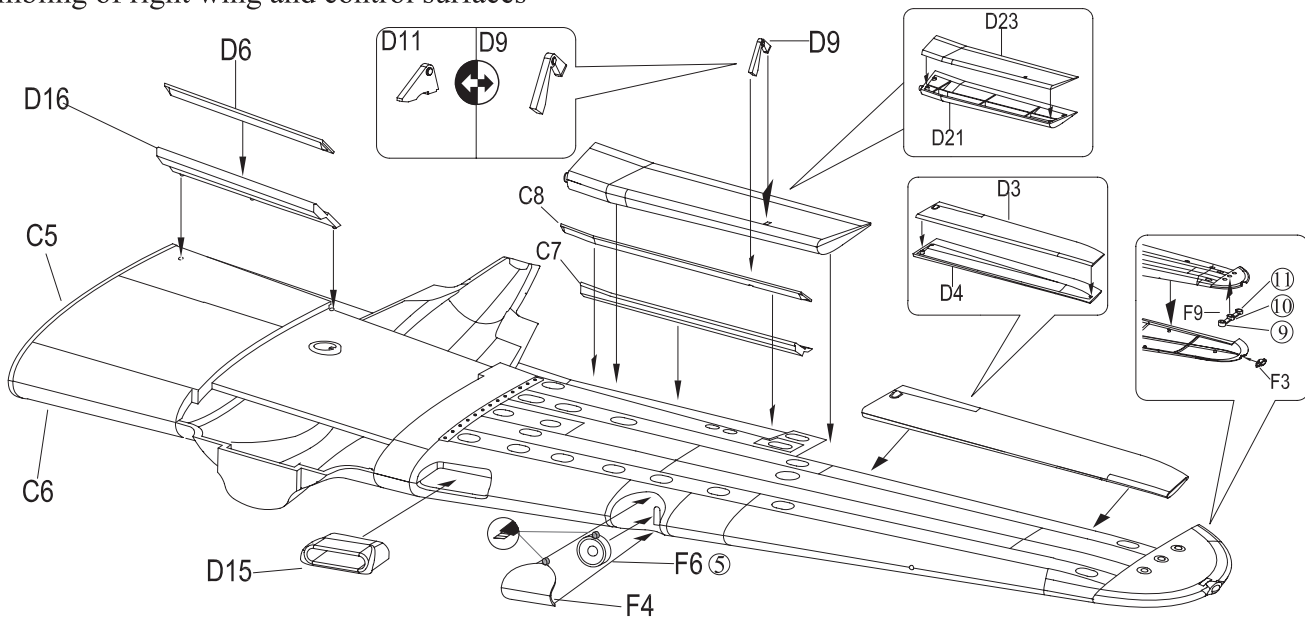
IMPORTANT:
The main landing gear strut must be installed on to the wing before assembling the engine nacell.



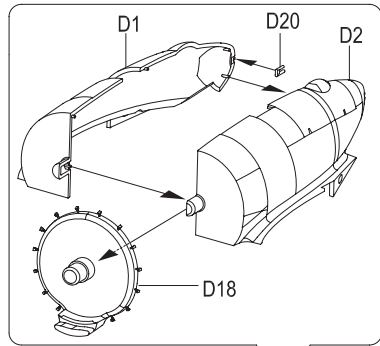
Assembling of engine nacell with gear up position of left wing



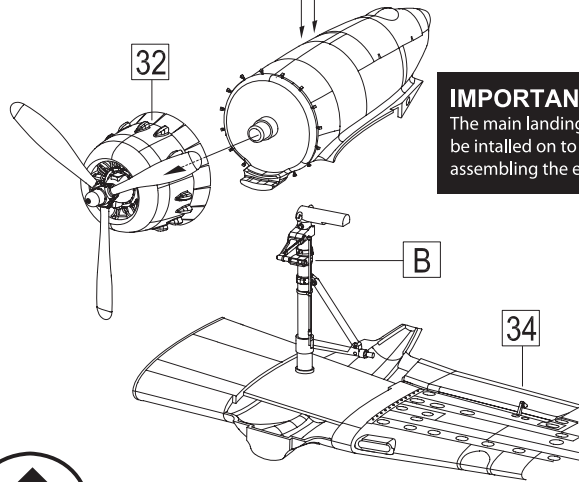
34 Assembling of right wing and control surfaces



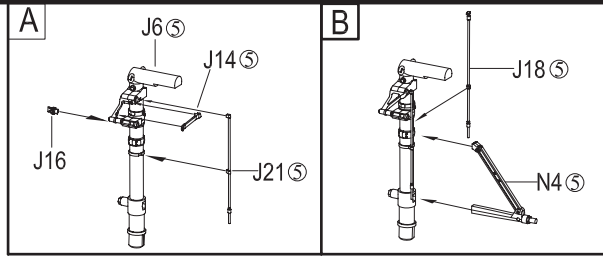
35 Right wing with landing gear in gear down assembly



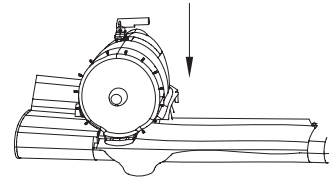
D12 ⊕ J19 ⊕



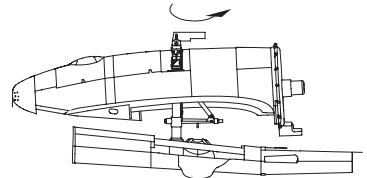
IMPORTANT:
The main landing gear strut must be installed on to the wing before assembling the engine nacell.



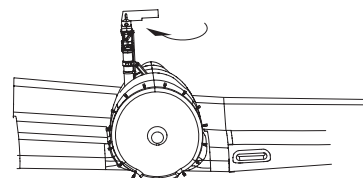
Procedures of installing the engine nacell



1. Pass the main gear strut through the opening of the engine nacell.



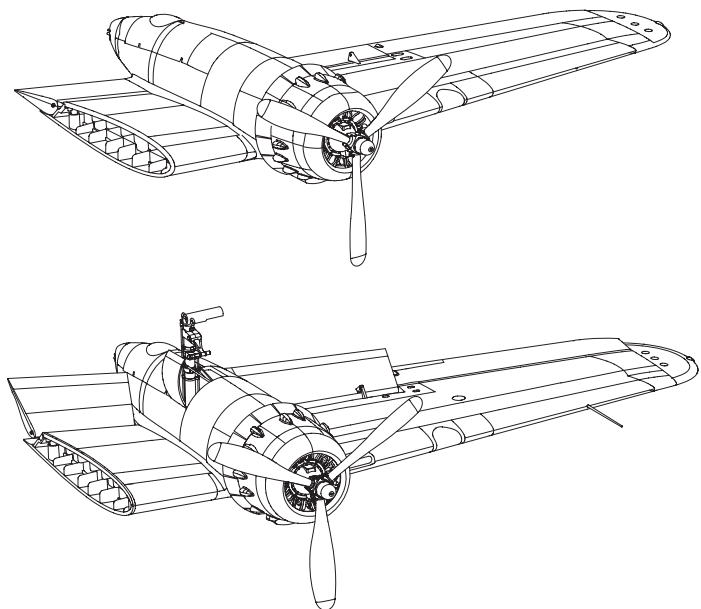
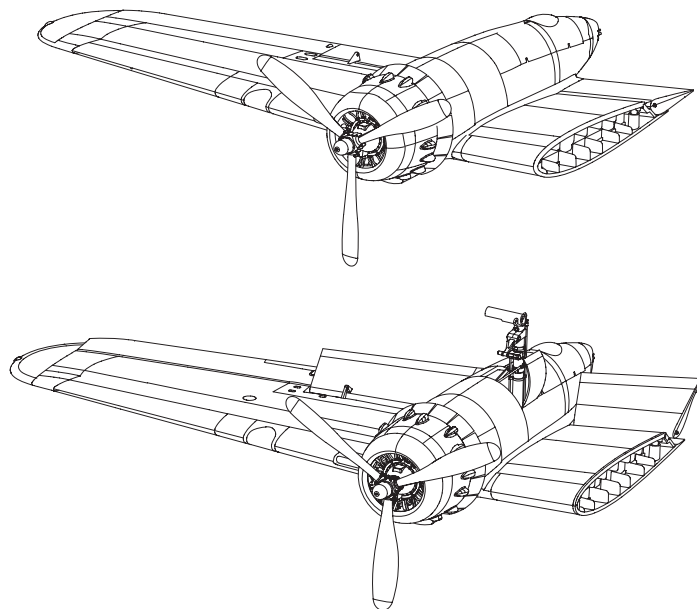
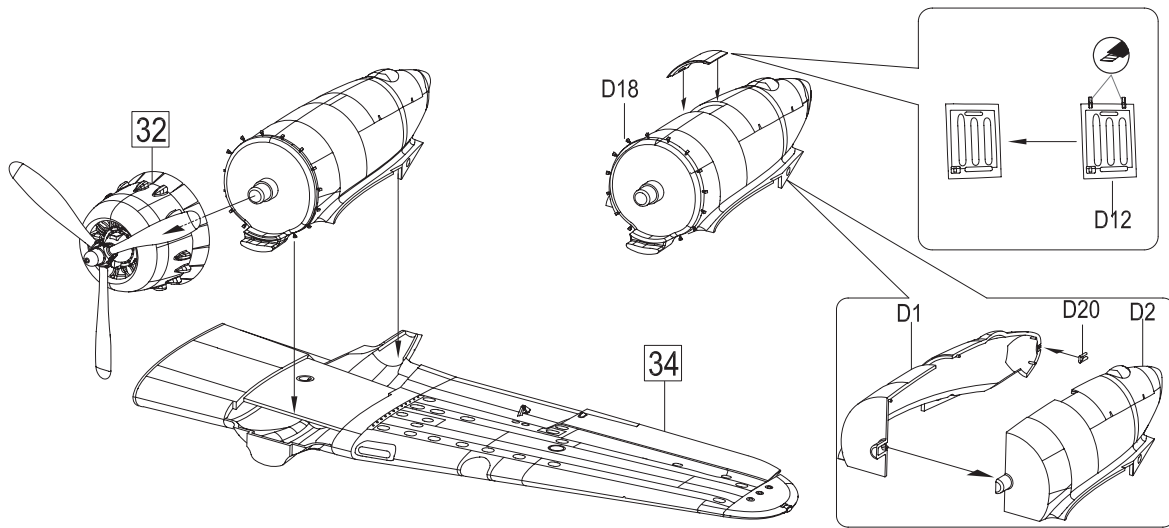
2. Turn the nacell side way so the supporting structure pass through the nacell.



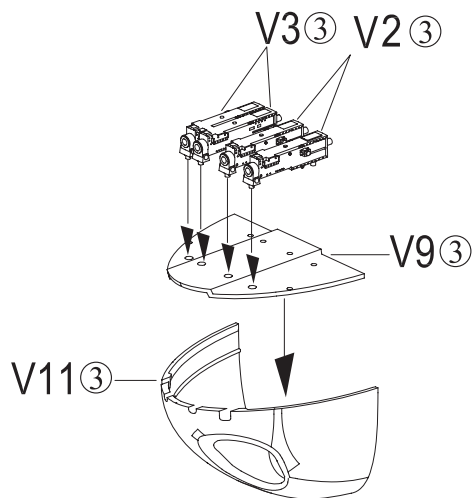
3. Turn the nacell back to the right direction and install on to the wing.



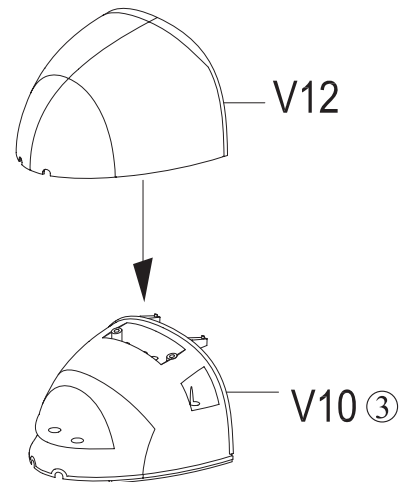
Right wing, engine nacelle with gear up position assembly



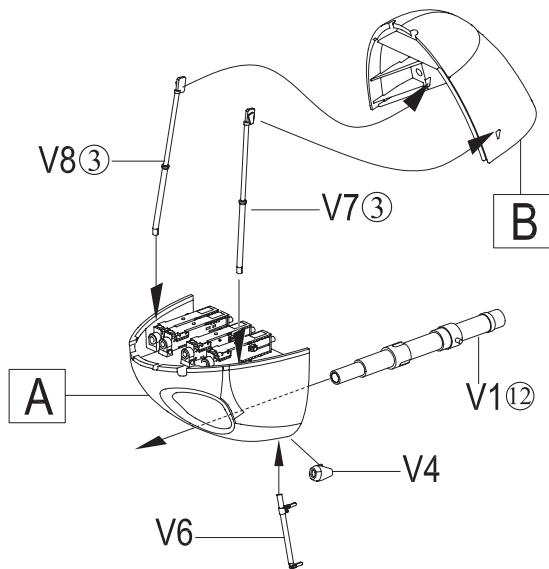
36 Nose assembly of gun ship version.



A

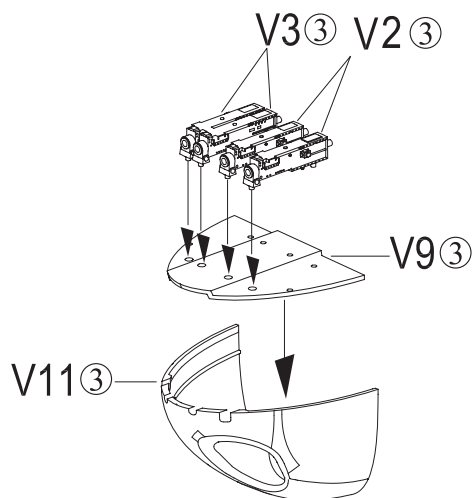
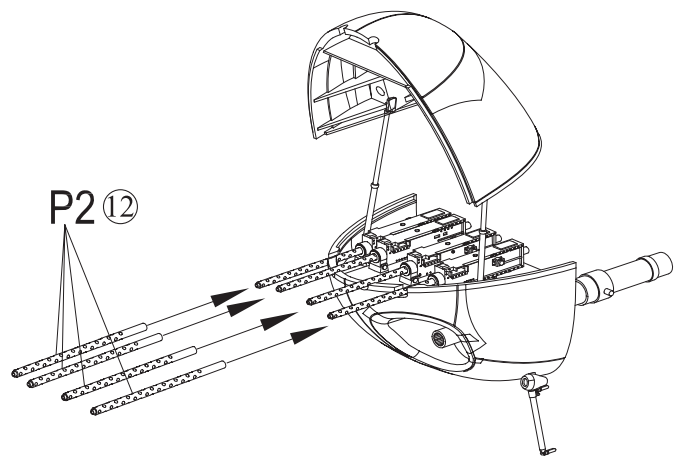


B

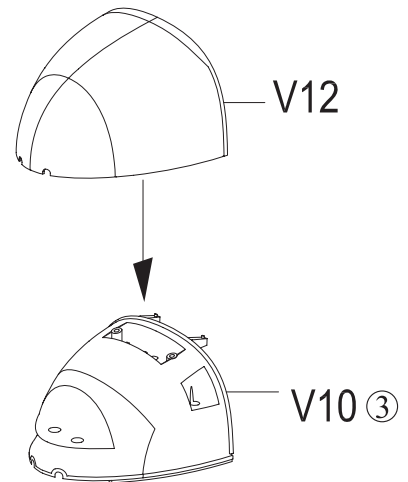


C

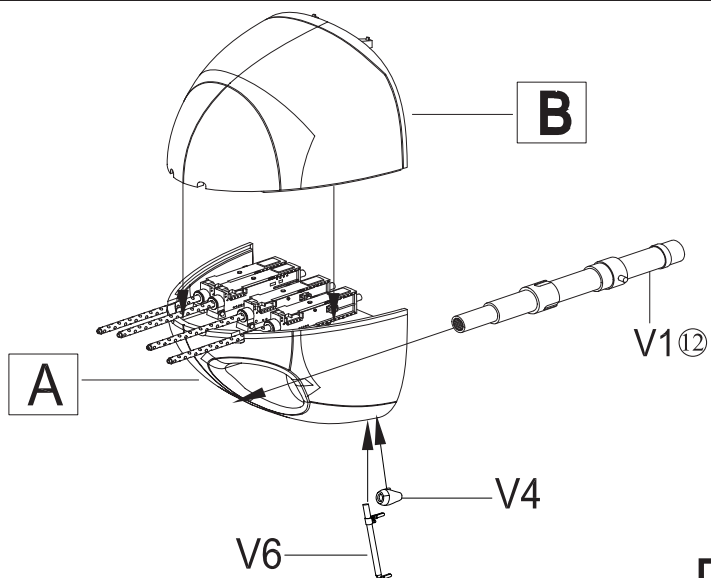
Armunations loading doors open position.



A

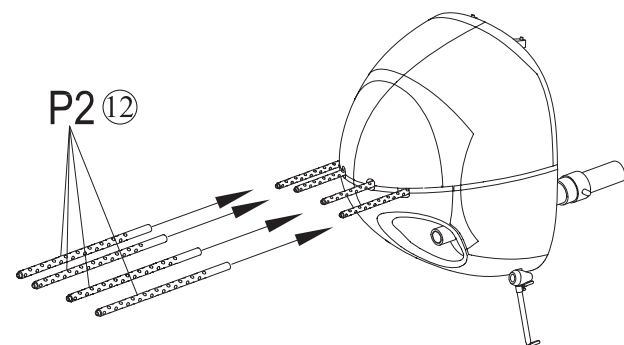


B

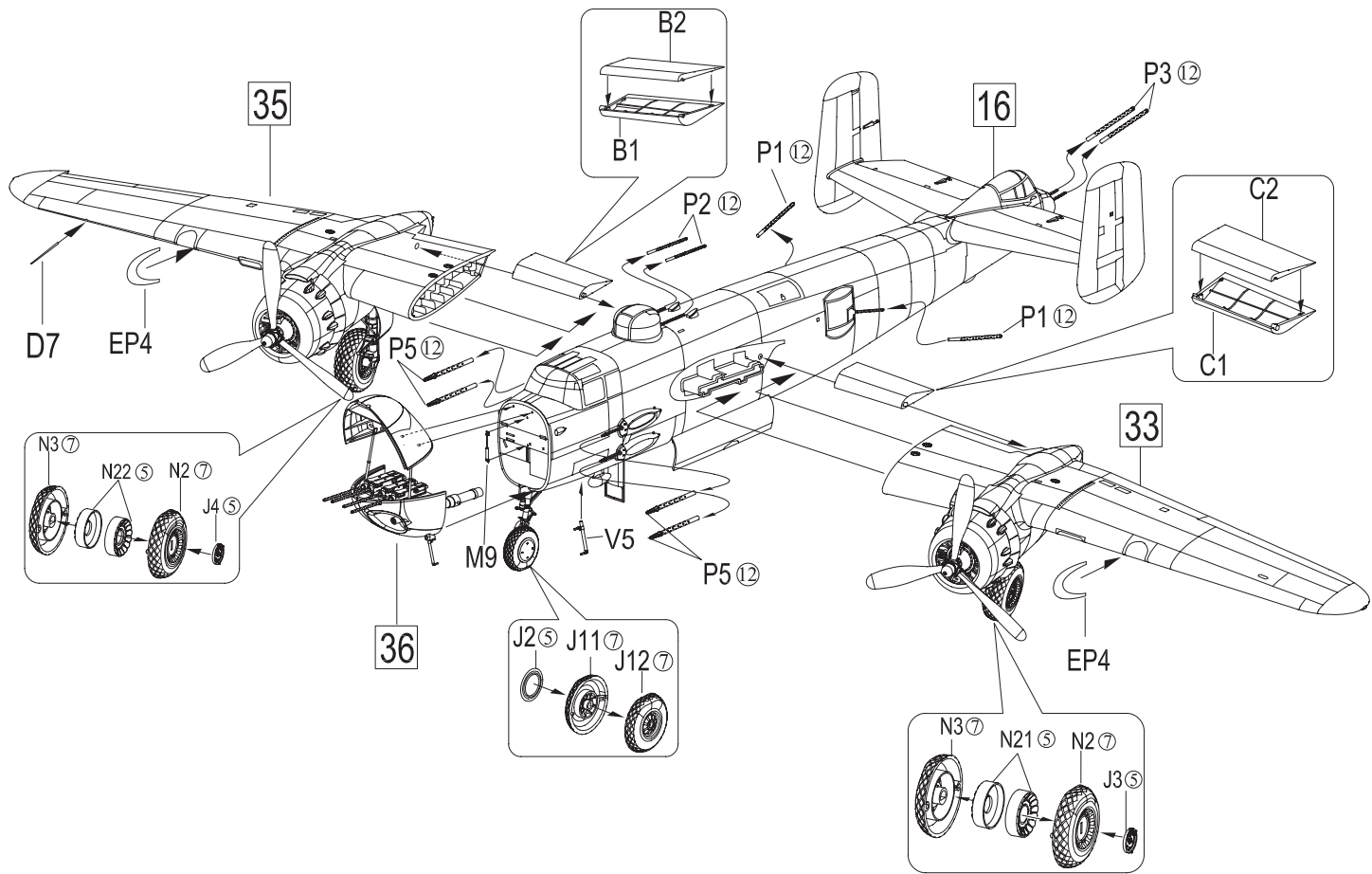


C

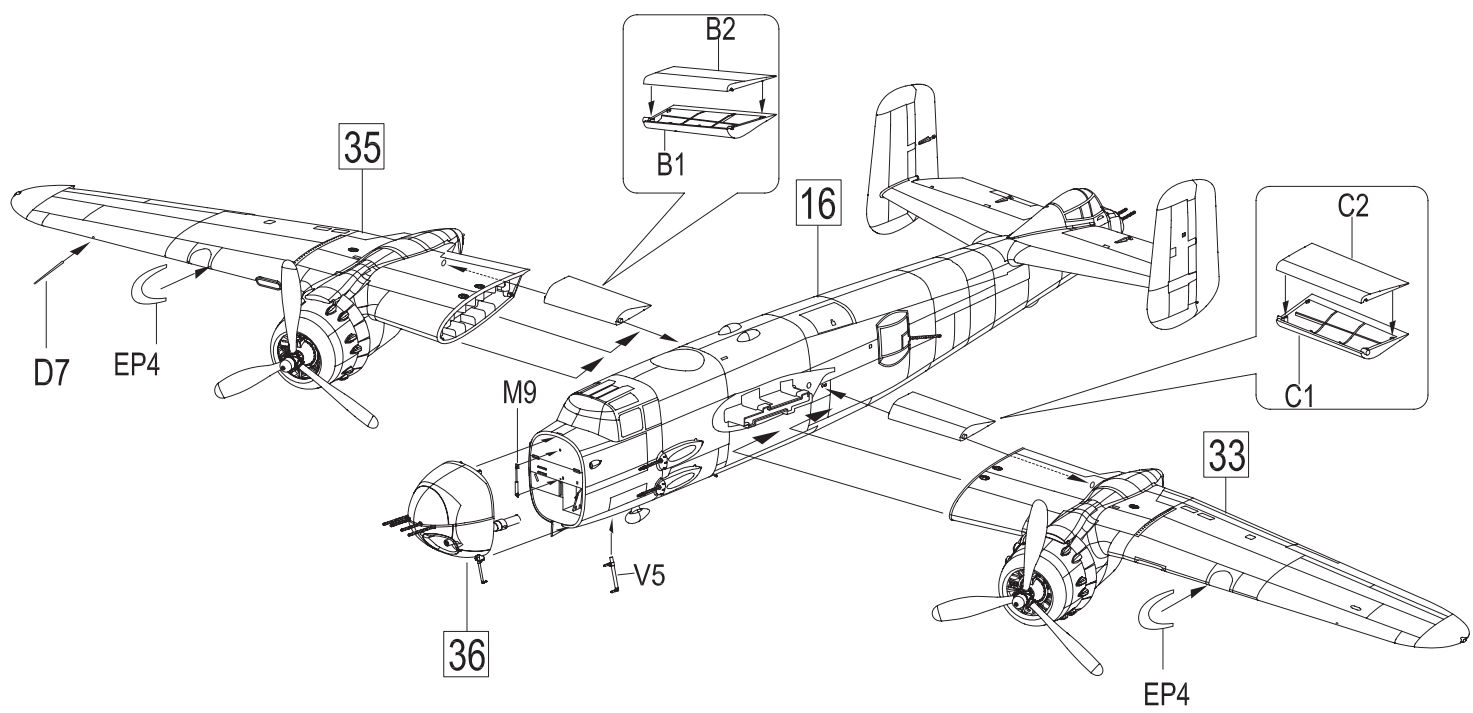
Armunations loading doors closed position.



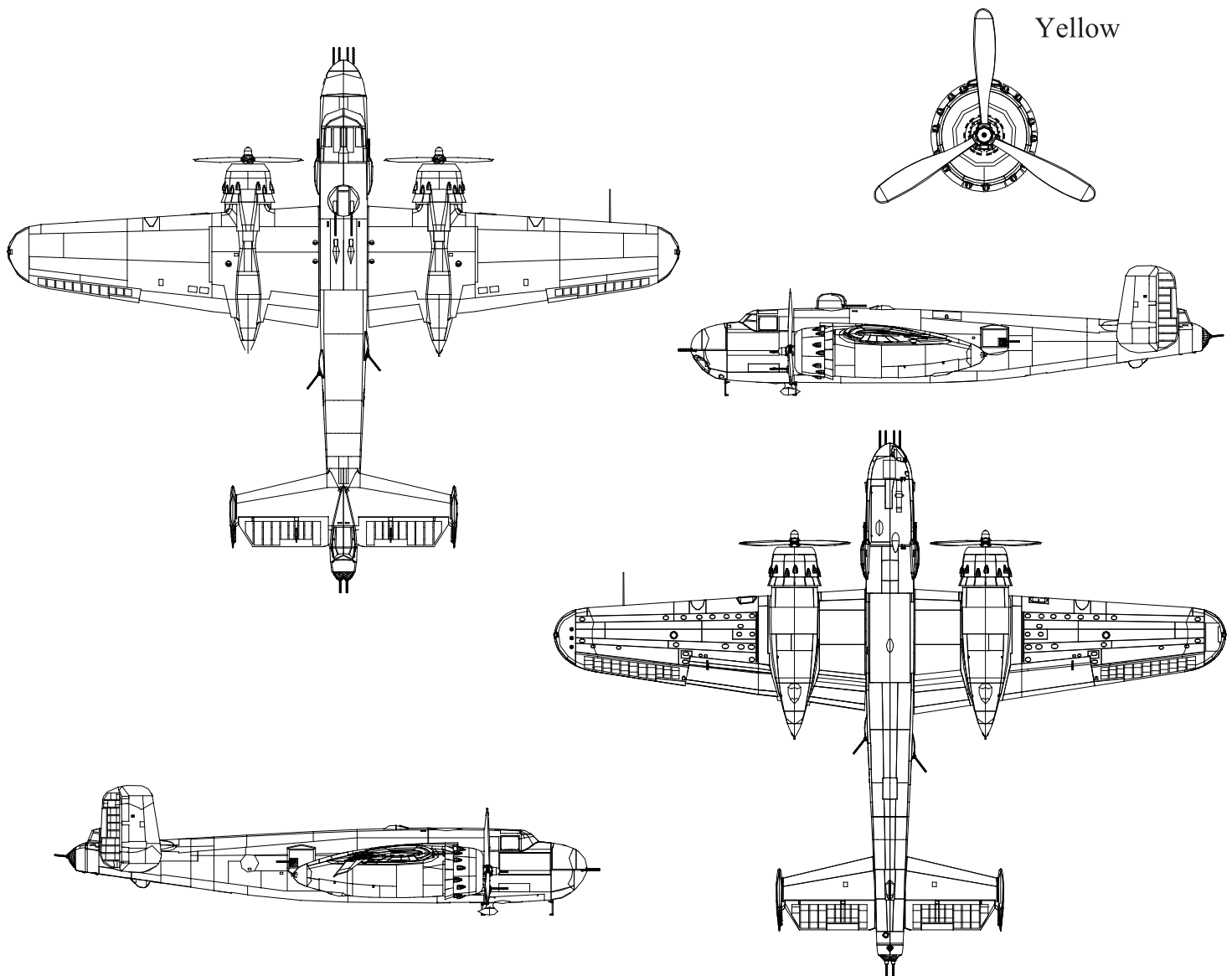
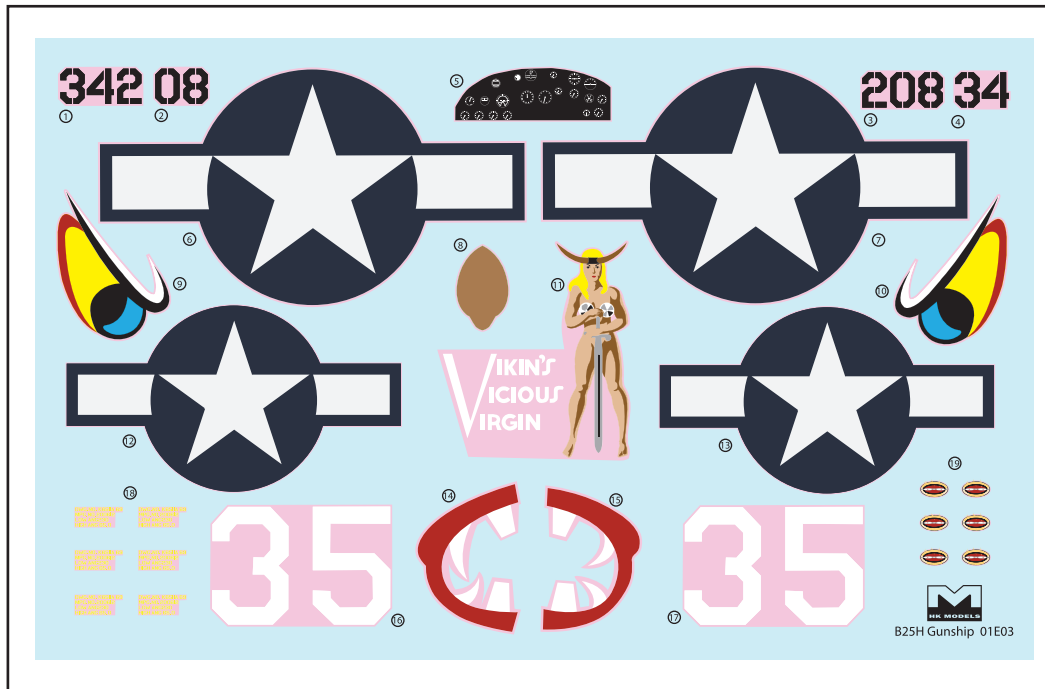
37 Final assembly, gears down position



37



Final assembly, flight position



Hong Kong Models Co., Ltd

Address: Flat 12, 12/F., Block A, Tak Lee Industrial Center. Ching Yeung Street. Tuen Mun. N.T. Hong Kong.

Tel: 852-2464 9813 Fax: 852-2626 4864

Website: www.hk-models.com E-mail: info@hk-models.com