

Plastic model kit containing 305 parts.

Wing span: 658 mm Length: 474 mm

1/48
SCALE



01F002

B-17 F Flying Fortress

The Boeing B-17 'Flying Fortress' was one of the U.S.A.'s main four-engine heavy bombers, operating alongside the B-24 Liberator, and the later B-29 Superfortress, in all theatres of World War 2. It's a fact that the B-17 almost never saw its place in history and the defeat of Nazi Germany, as the prototype, known as Model 299, crashed due to pilot error during its evaluation in October 1935. Thankfully, the design had shown such promise during the testing phase, in fact exceeding the requirements of the original specification, that further prototypes were ordered despite Boeing losing the original contract with the United States Army Air Corps. It was this further evaluation that saw the type enter active service in 1938. The actual name 'Flying Fortress' was coined by a newspaper hack who witnessed a roll-out of the machine, bristling with guns and turrets, and Boeing realised that this was the sort of propaganda they needed, and trademarked the name. After the initial prototypes, serial production of the B-17 began with the B-17B variant, and underwent a major revision with the introduction of the 'E'. This type featured a substantially redesigned tail and fillet that featured throughout subsequent versions, giving the B-17 its iconic profile. An extra 10ft of length was added to the fuselage. Other refinements included the addition of a tail and dorsal turret, and

the addition of a Bendix turret to replace the fixed bathtub type that had graced previous versions. This was found to be disappointing, and was eventually replaced with the Sperry ball turret that became a permanent feature of all future marques.

Differences between the E & F versions were mostly changes in nose armament layout, with staggered cheek guns being implemented, and a change in the bombardier's glass nose, although this would vary occasionally between machines, with a number of sub-types and adaptations being fitted. Other changes included engine cowls with rounder forward radius, paddle-blade prop blades and strengthened undercarriage that allowed the internal bomb load to double from 4000lb to 8000lb.

The B-17 F was powered by 4 x Wright R-1820 "Cyclone" turbocharged radial engines that were constantly updated over the service life of the B-17, and also carried 11 x .50cal M2 Browning machine guns, with a twelfth being sometimes fitted in the glass nose. Wingspan was 103ft 9in, with a length of 74ft 4in. A crew of 10 was typically carried by the B-17.



BE CAREFUL



REMOVE



GLUE TOGETHER



PLEASE WAIT FOR A FEW MINUTES UNTIL DRY



MAKE 2 PIECES



DRILL HOLE



DO NOT GLUE



INSTANT GLUE FOR METAL



BEND



FILL HOLE



SEQUENCE OF WORK



OPTIONAL



USED COLOUR



APPLY DECAL



MARKING OPTION

CAUTION

When using both glue and paint, do not use these near an open flame, due to the flammable properties of these items.

The symbols provided, such as 'X', refer to the basic colours of parts, although a more comprehensive list is supplied for your use for Tamiya, Mr Hobby and AK-Interactive codes.

When removing parts from sprues, take extreme care. Consider correct tools such as Xuron Sprue Cutters

Please check the symbology on the left and familiarise yourself before building this model kit.

In cooperation with:



www.ak-interactive.com

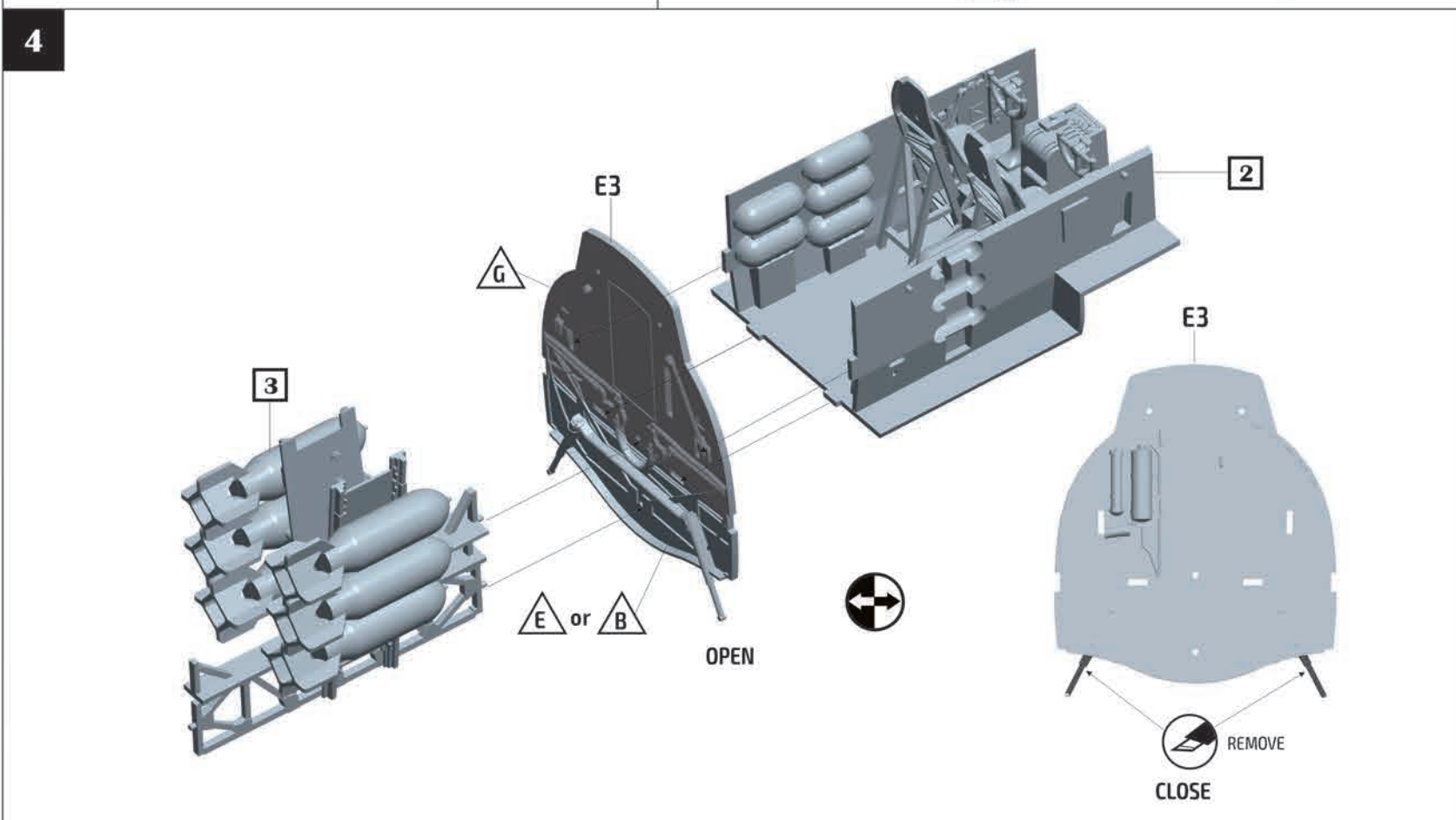
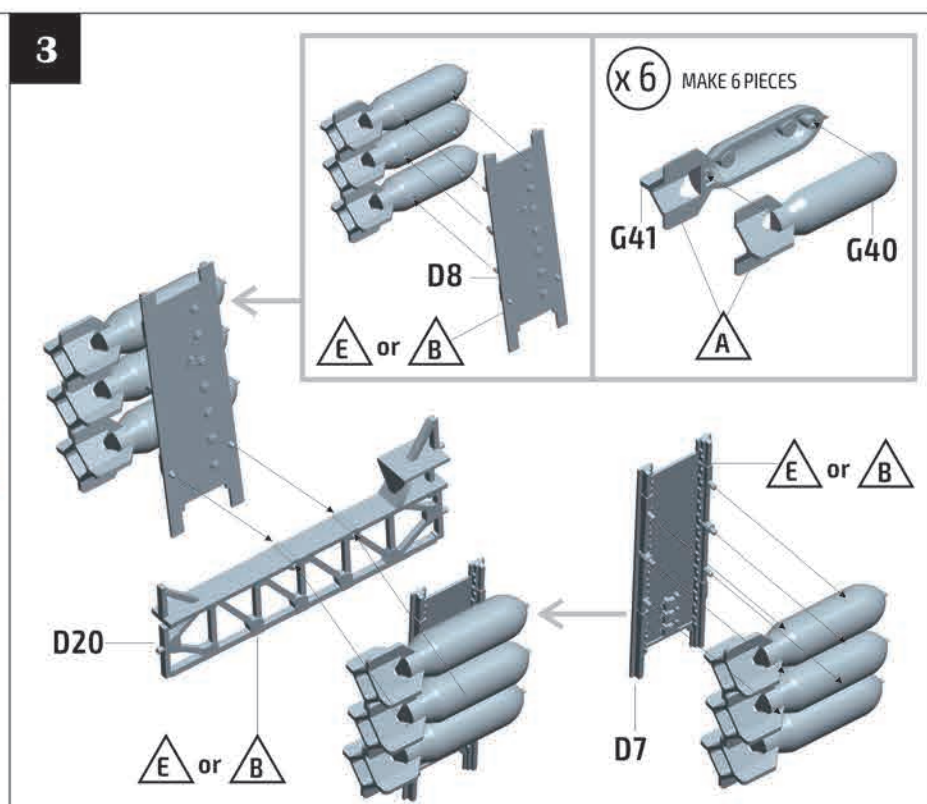
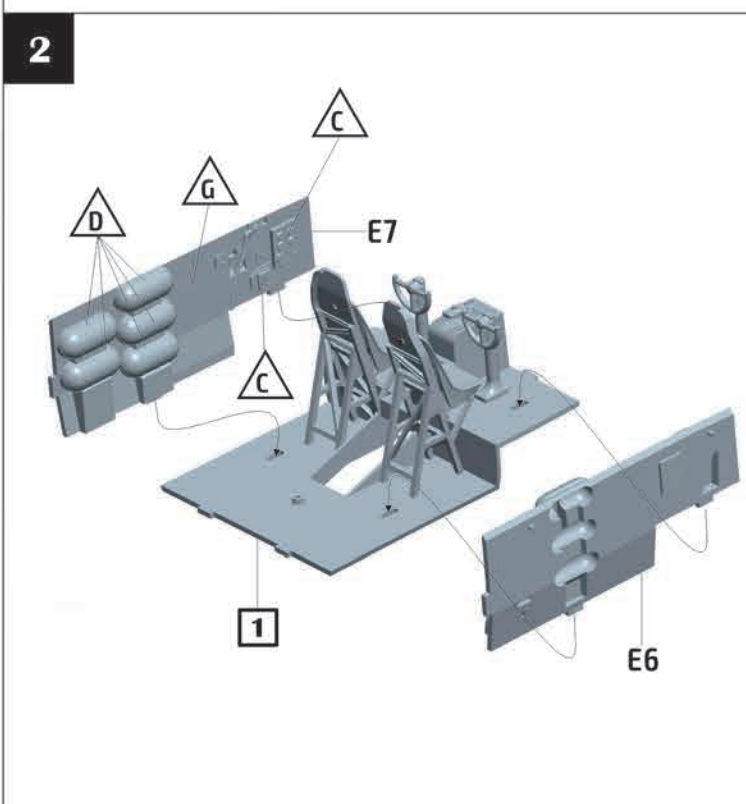
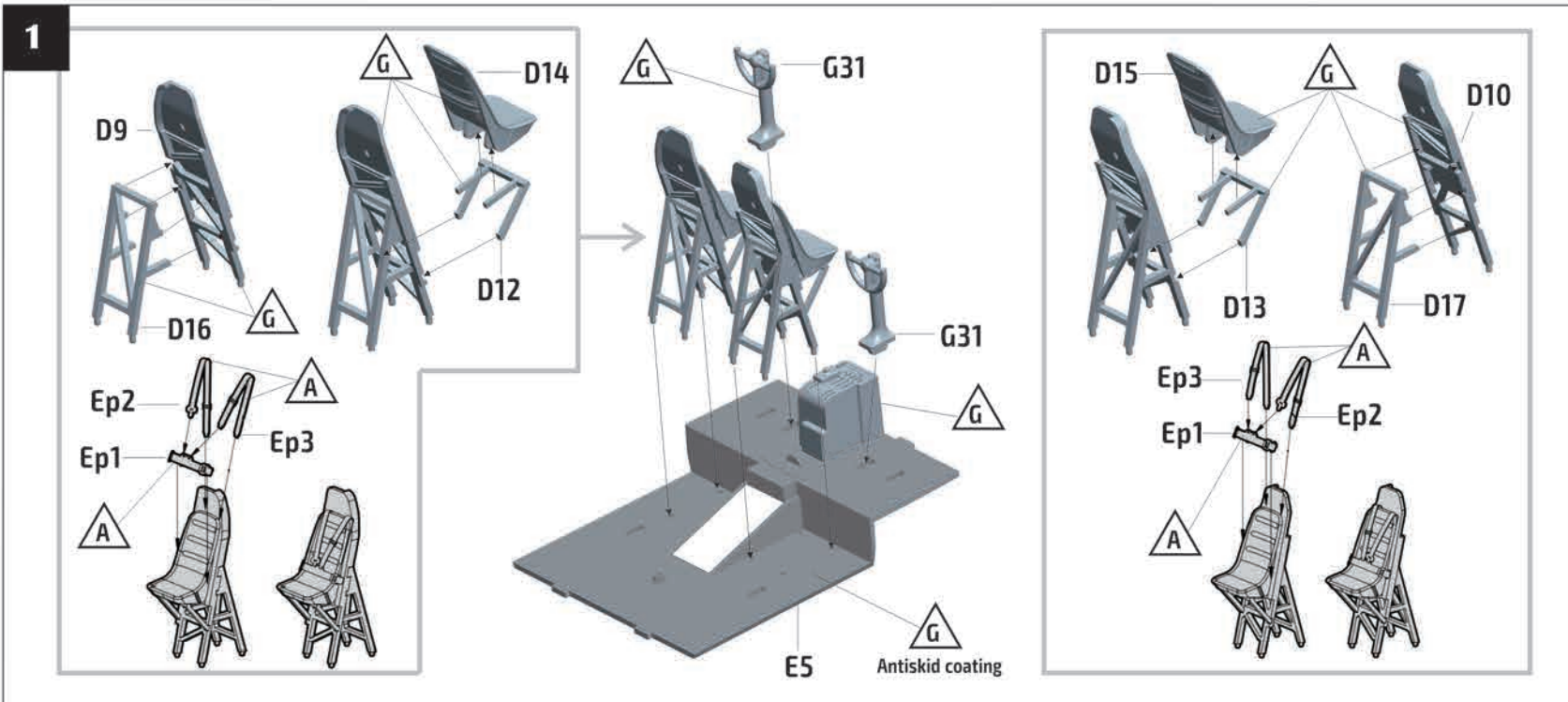


Large Scale Modeller

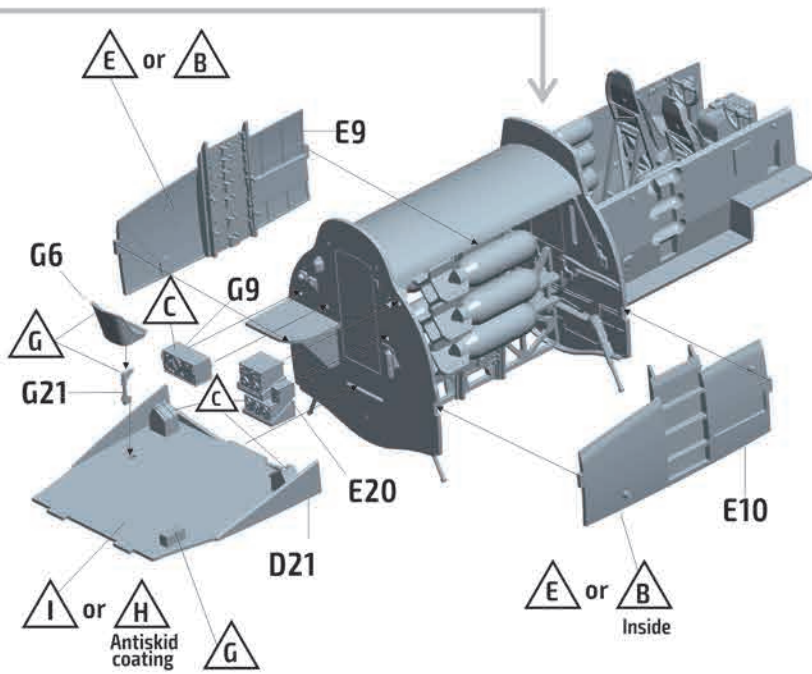
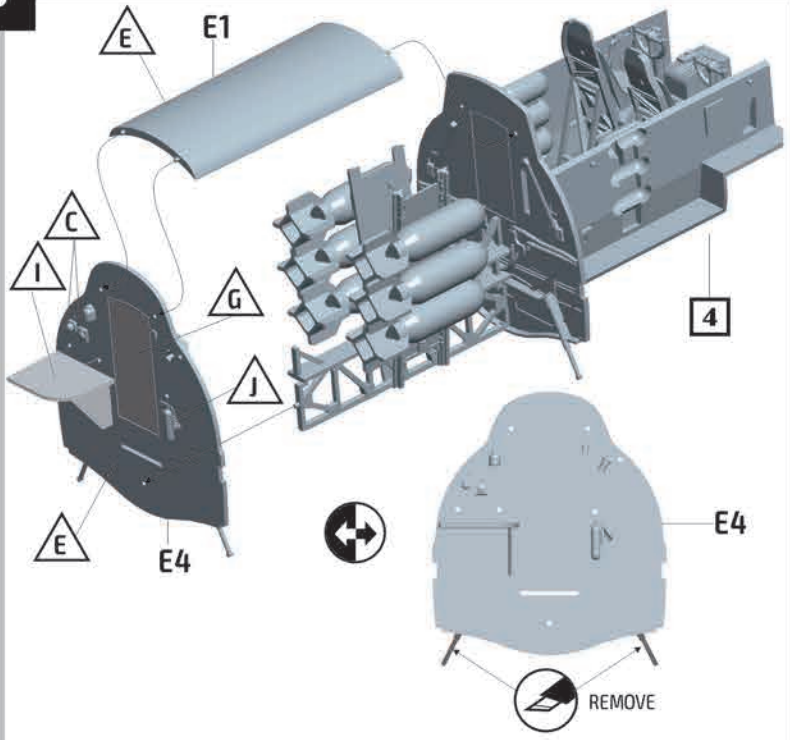
www.largescalemodell.com



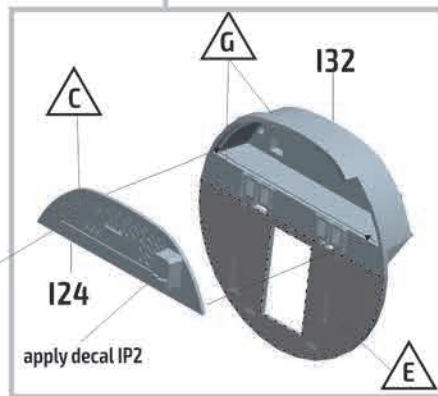
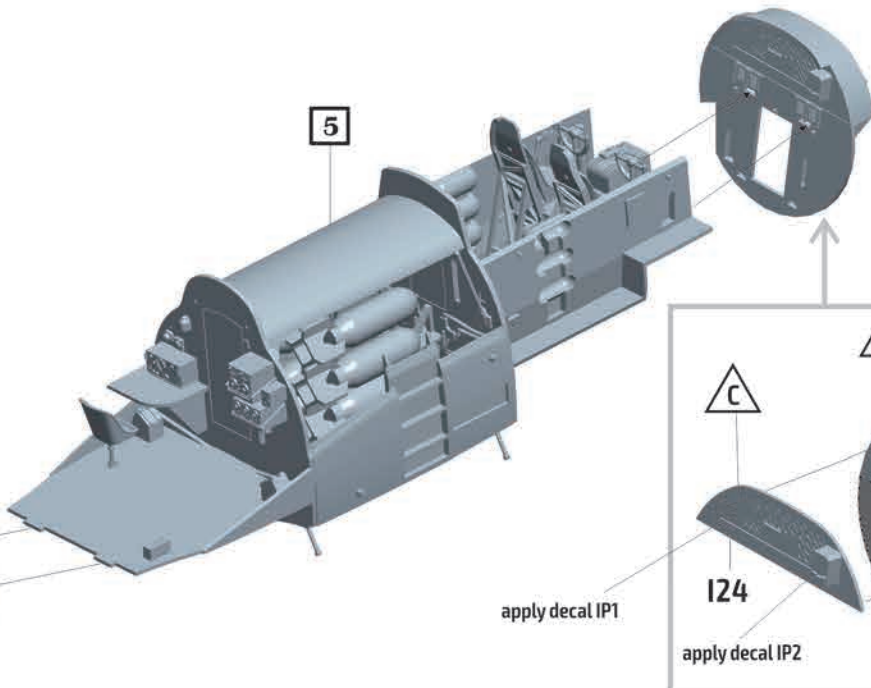
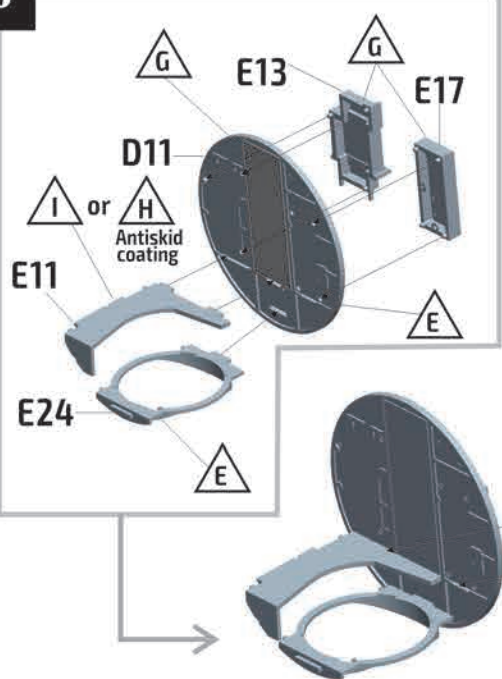
HK MODELS 01F002



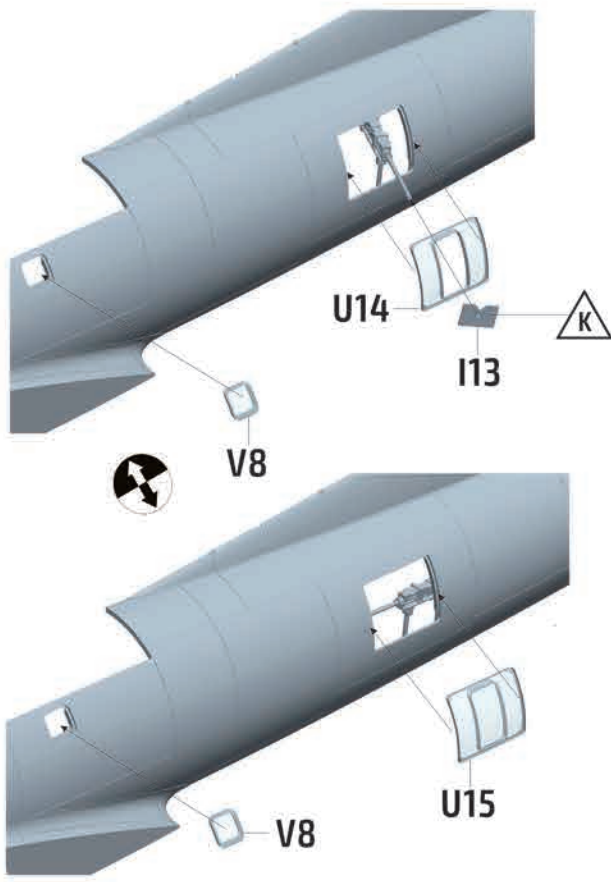
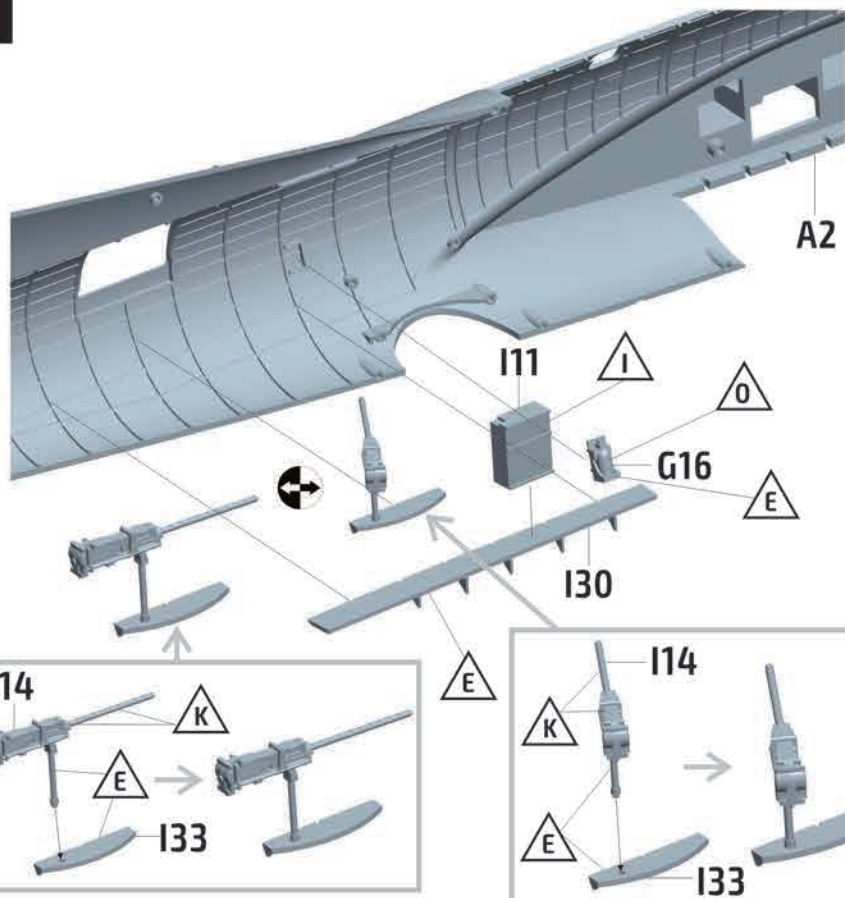
5

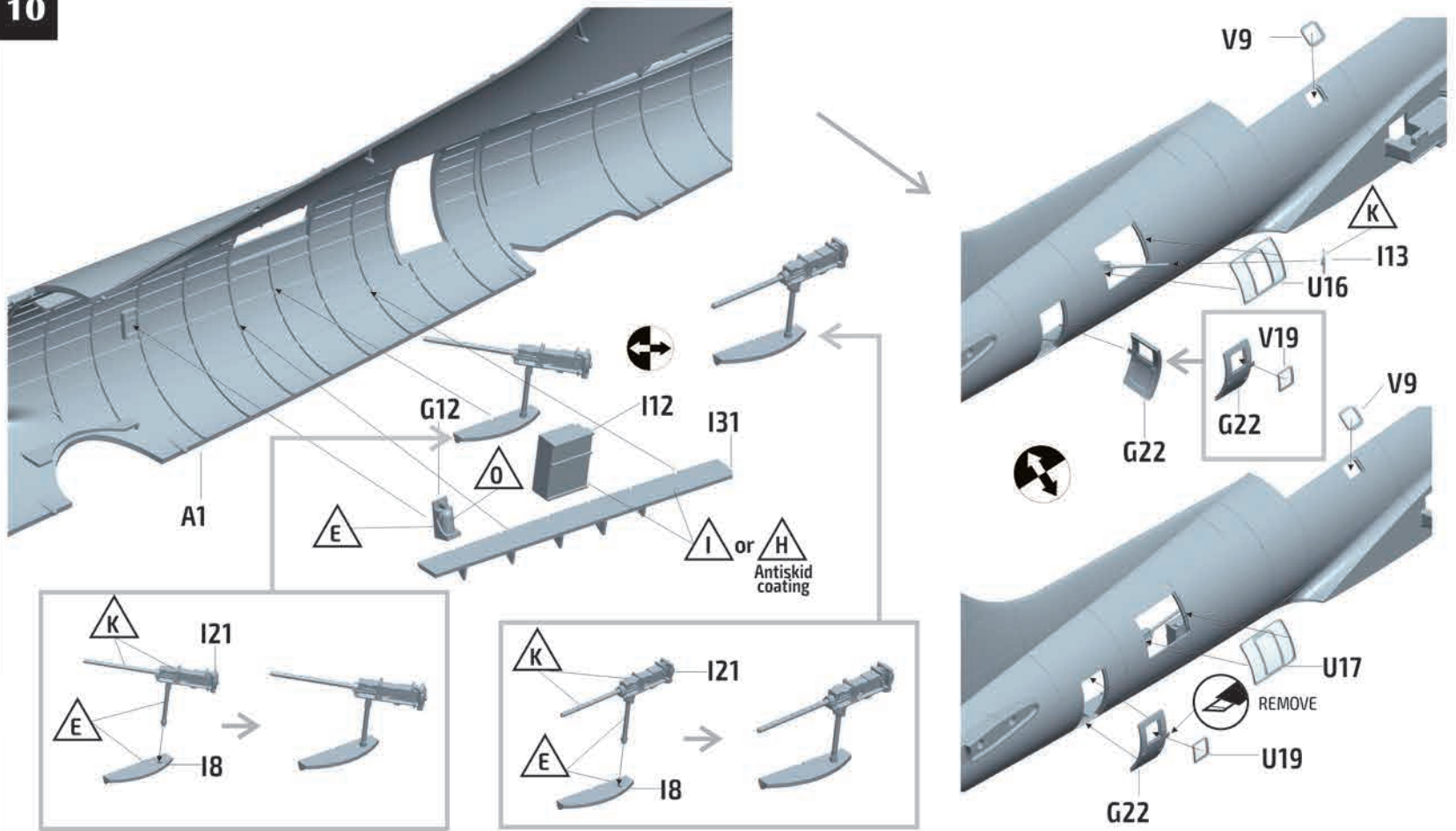
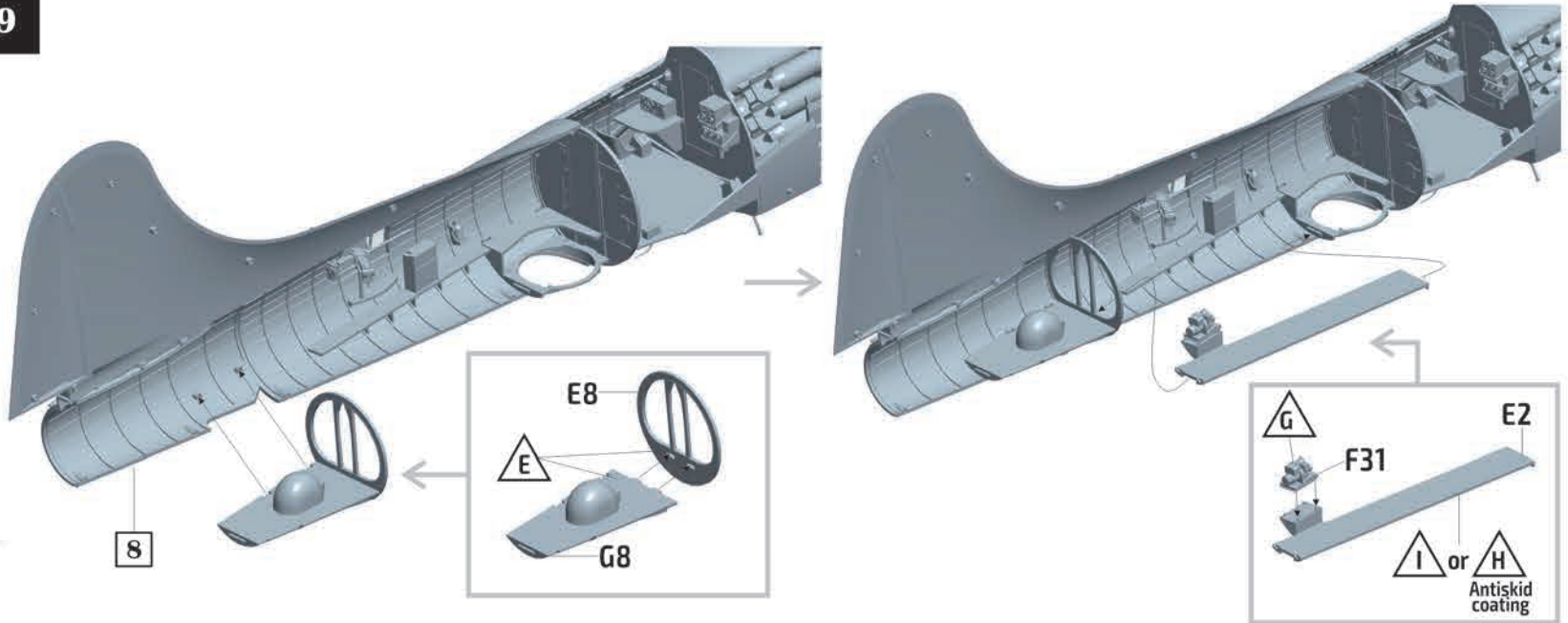
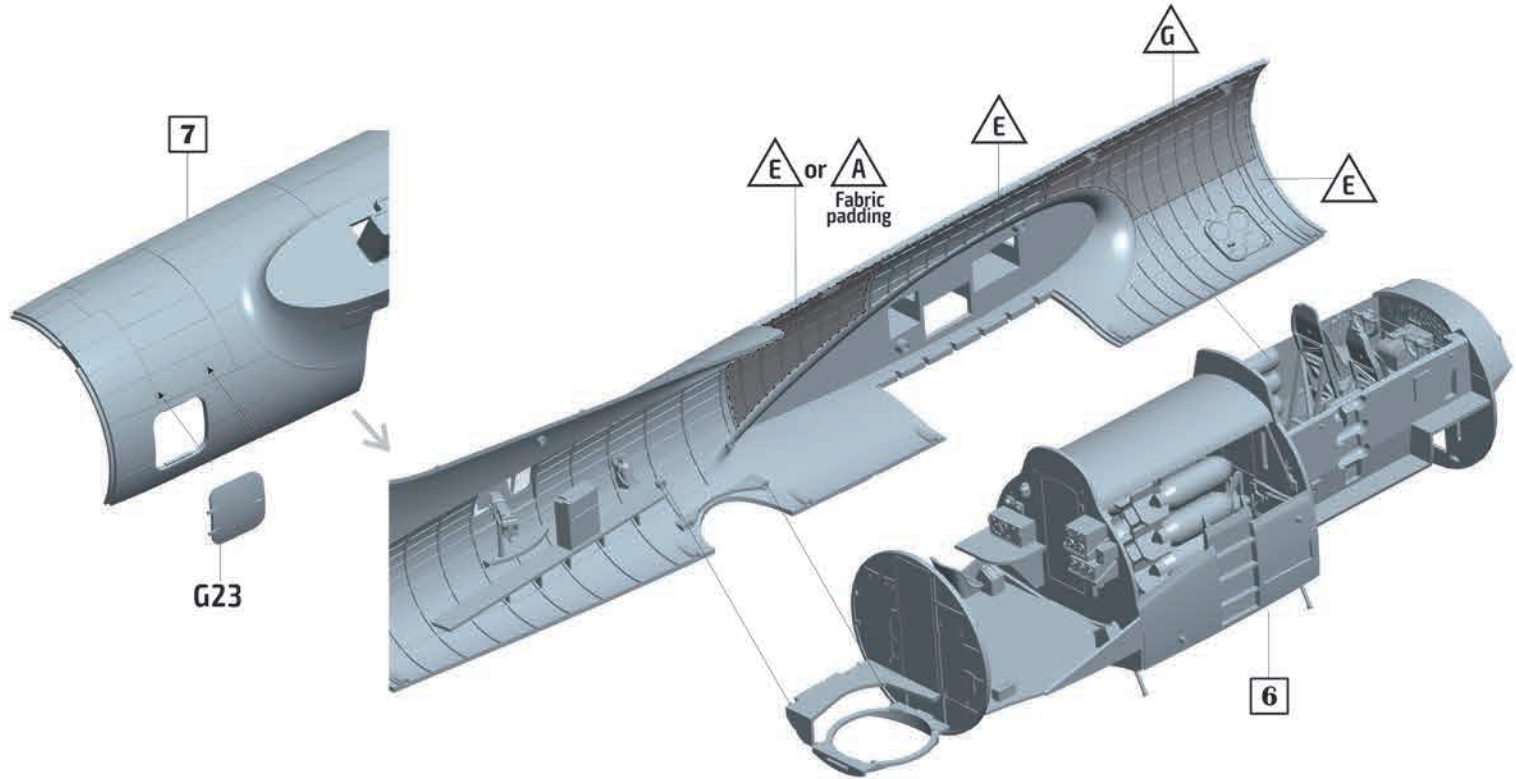


6

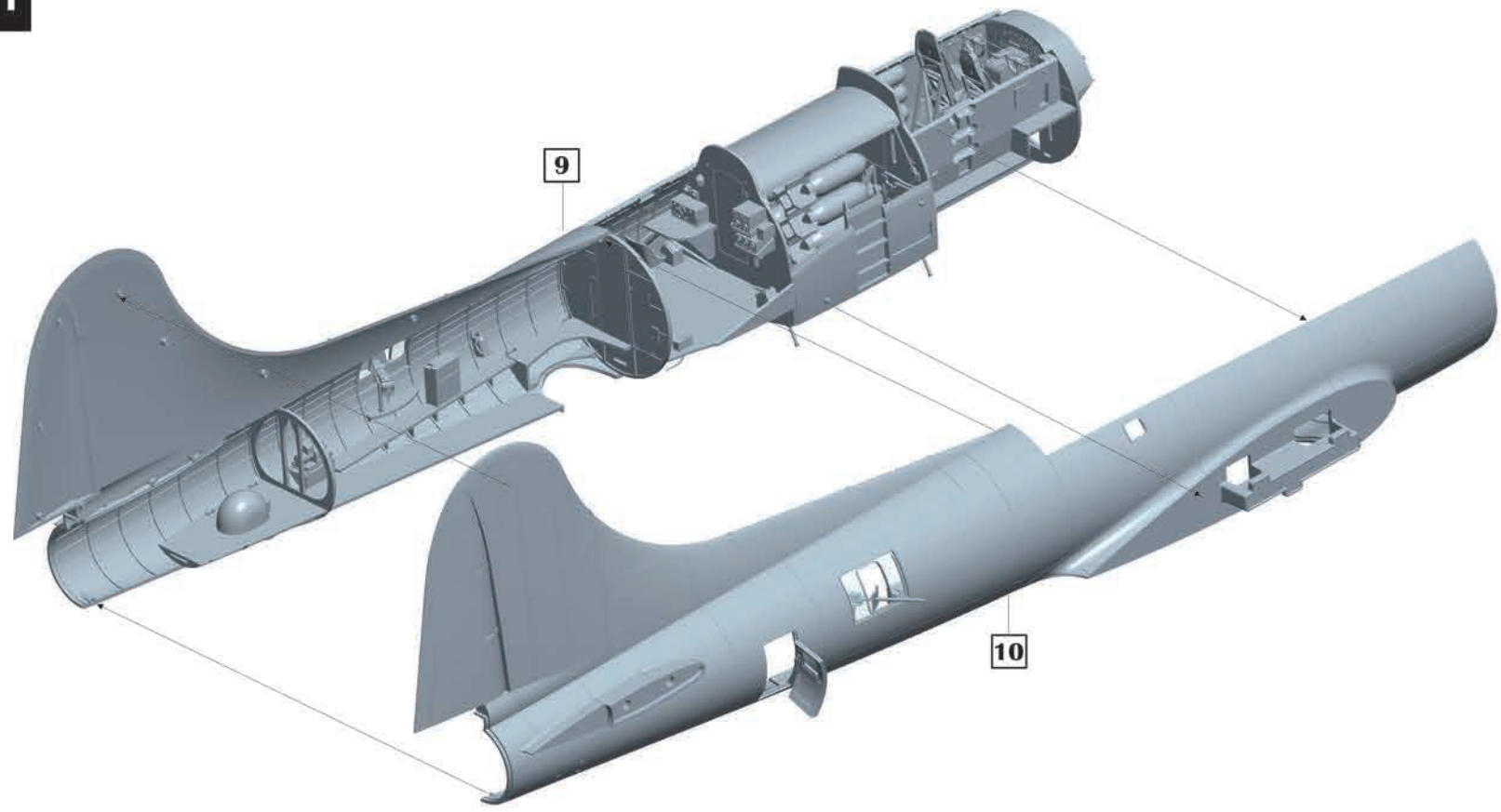


7

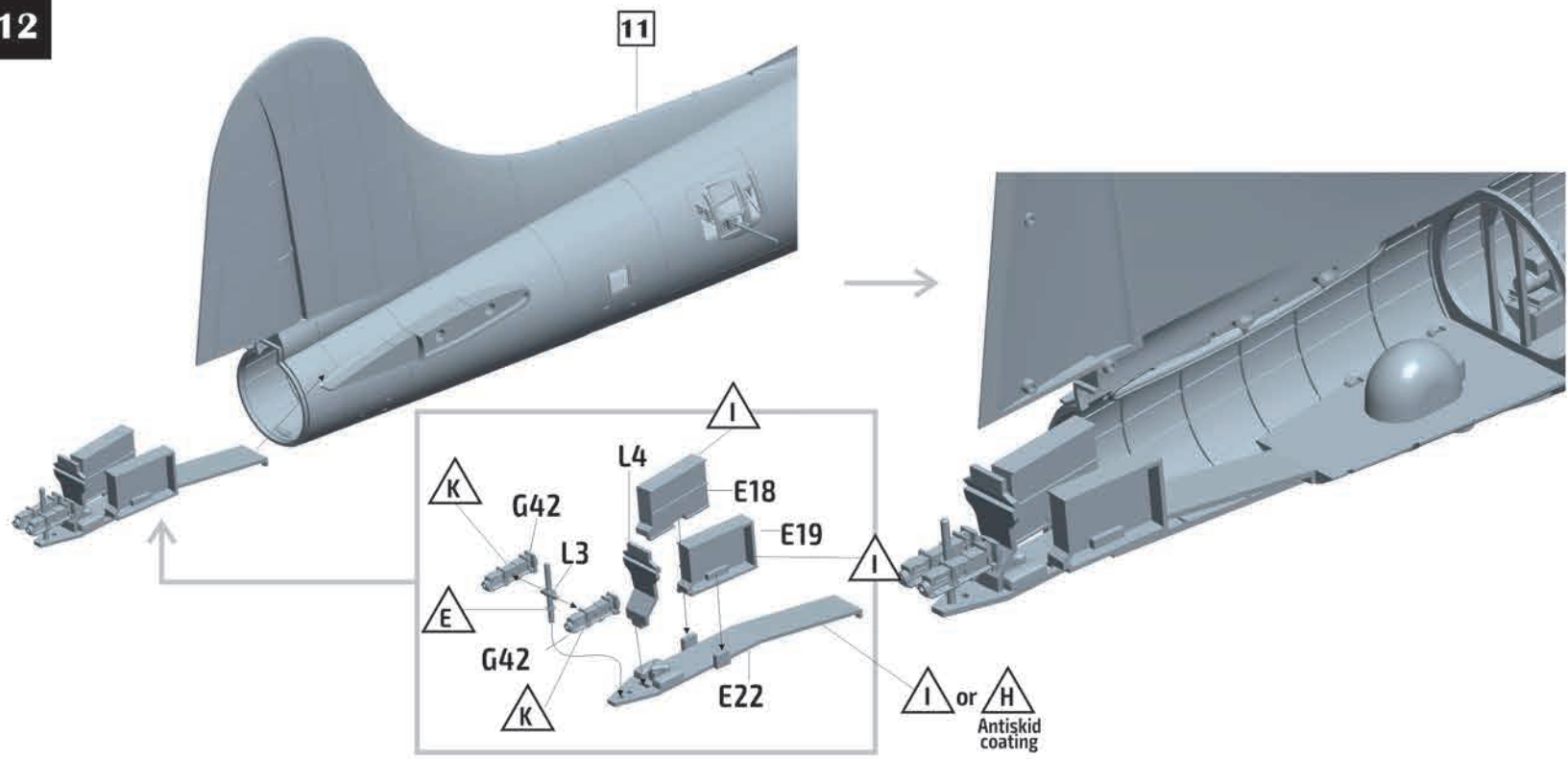




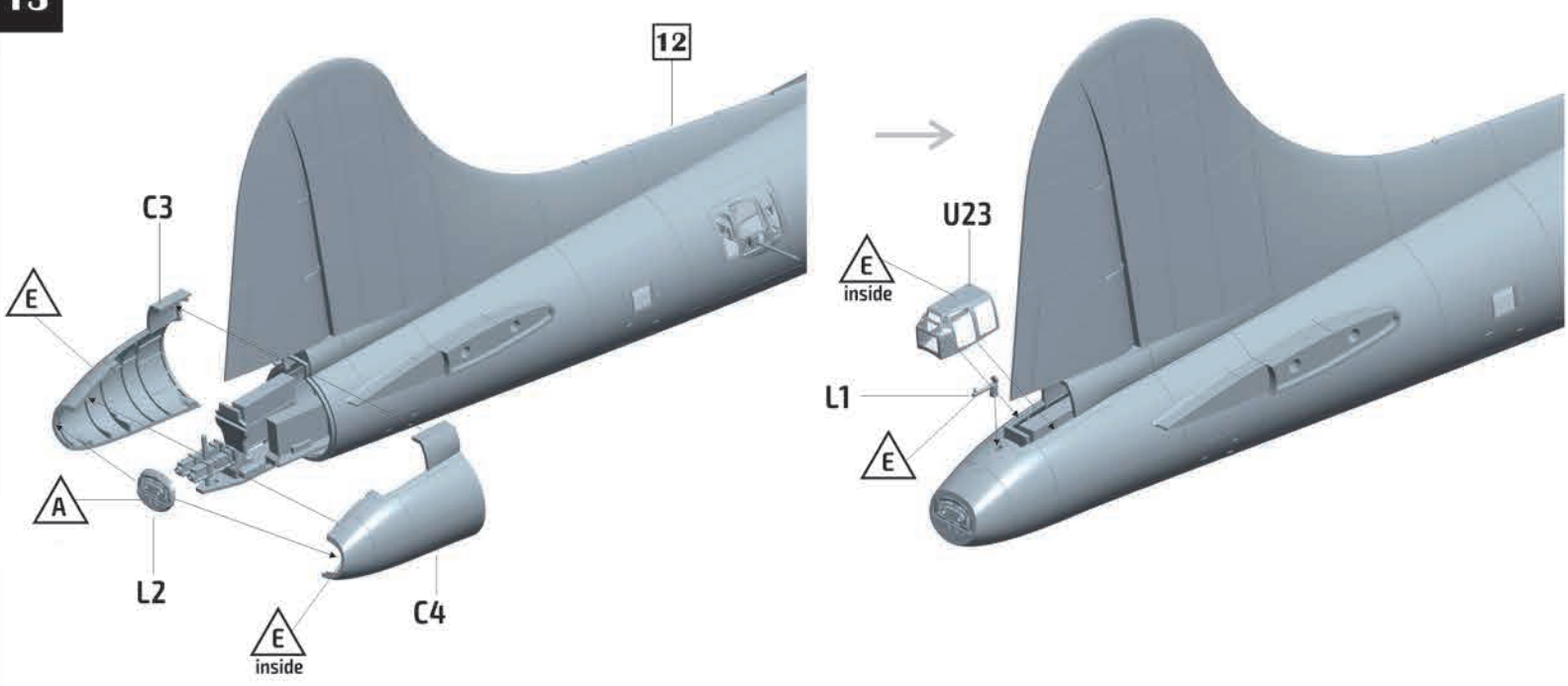
11

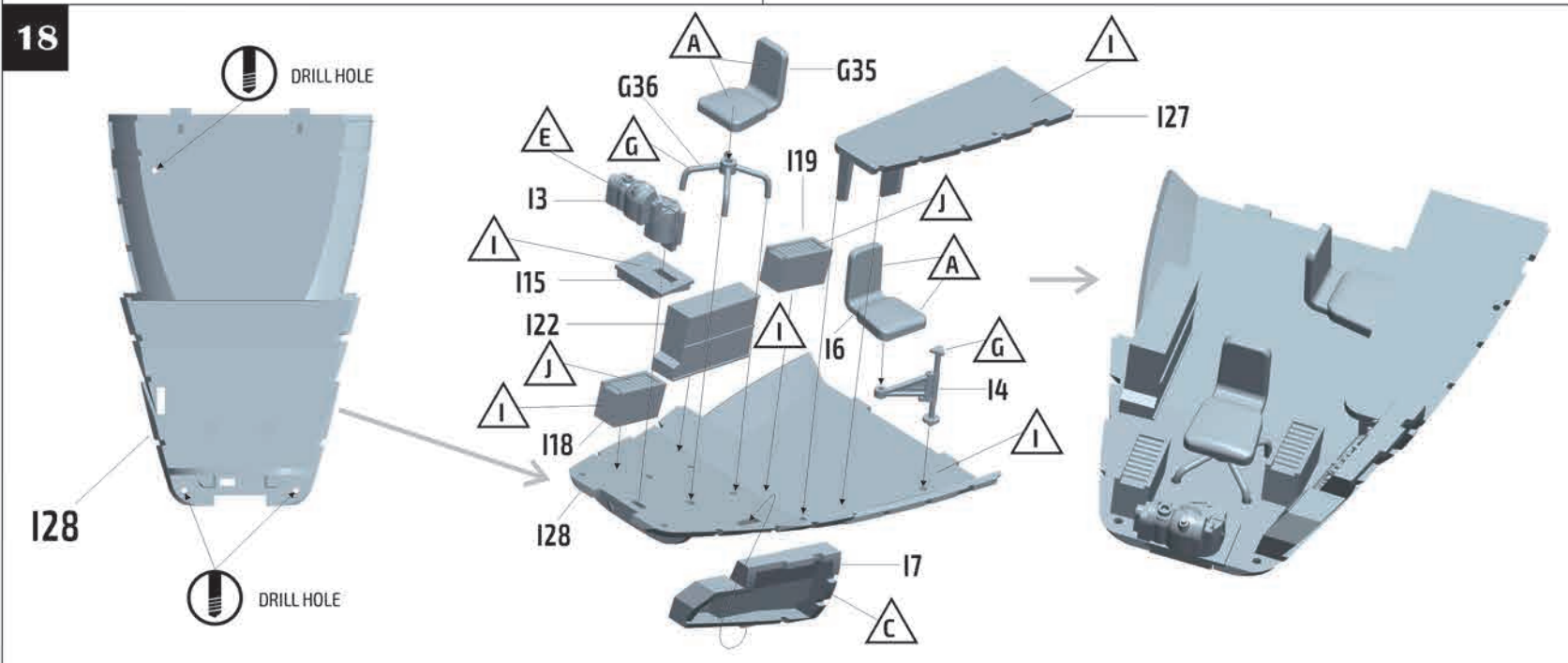
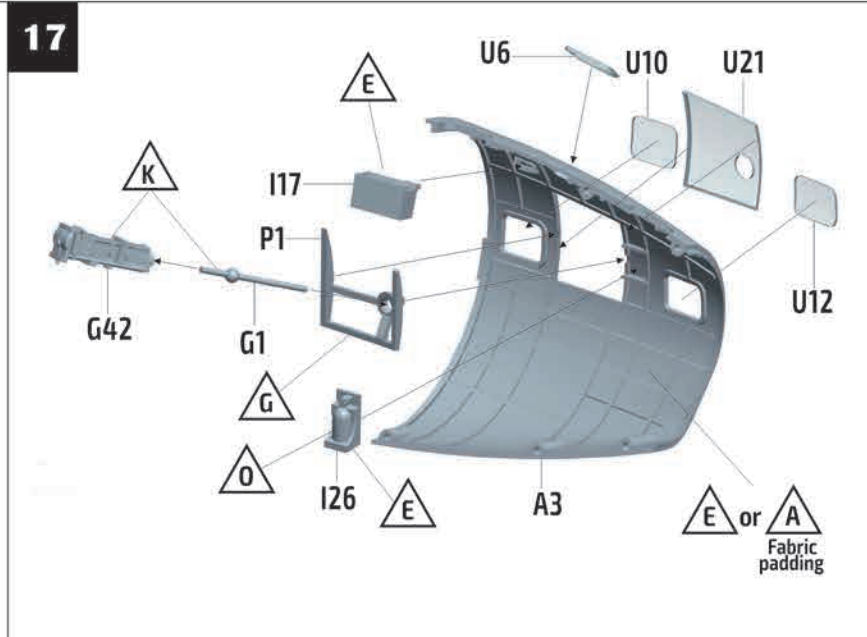
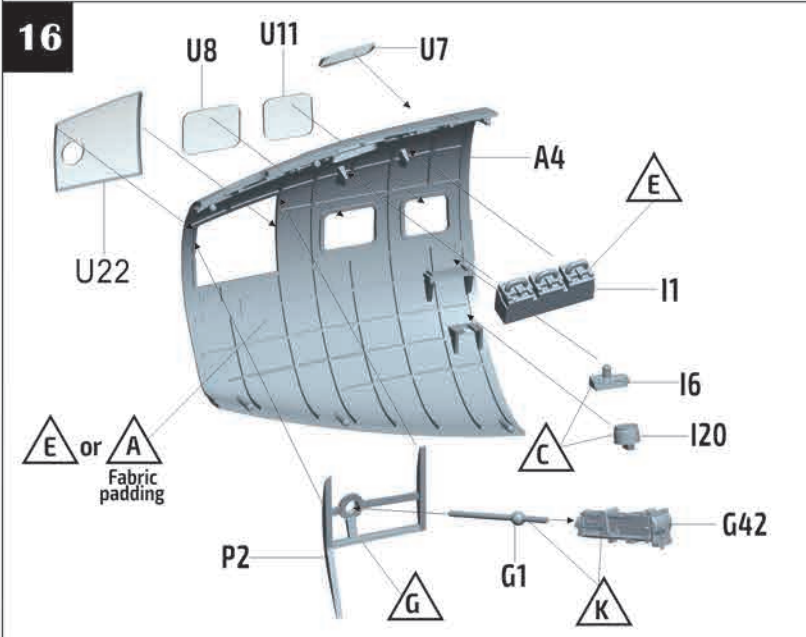
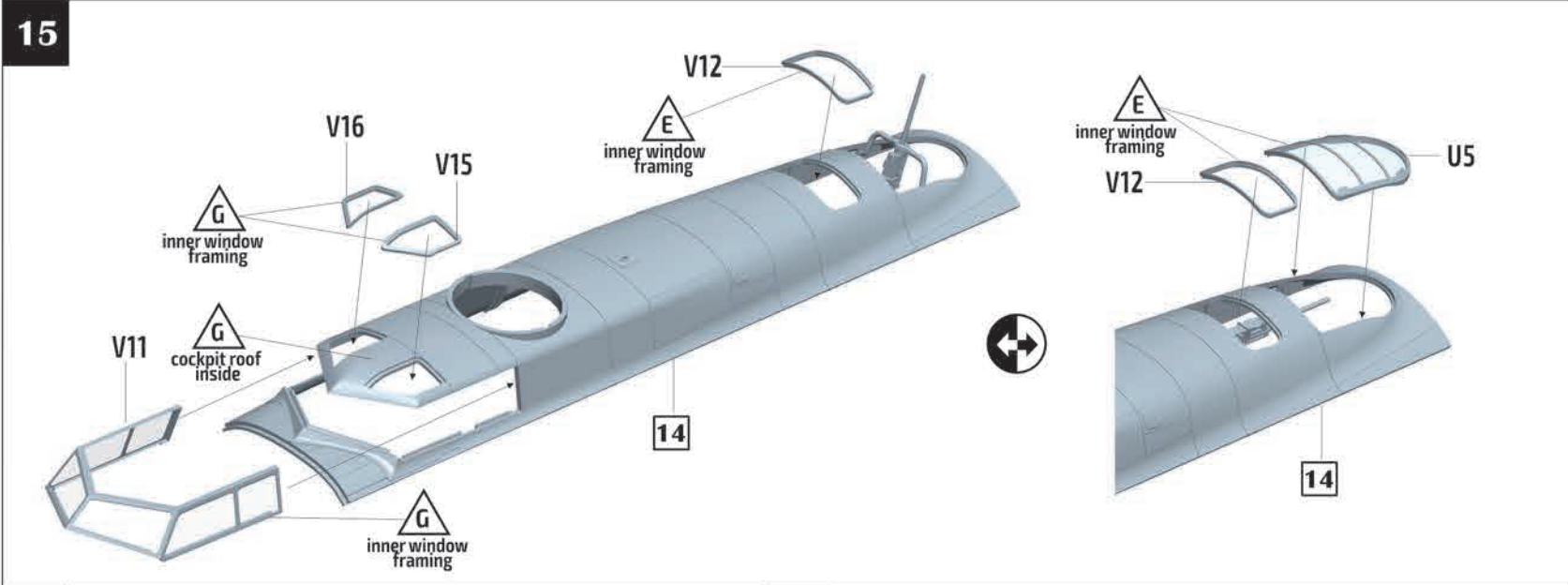
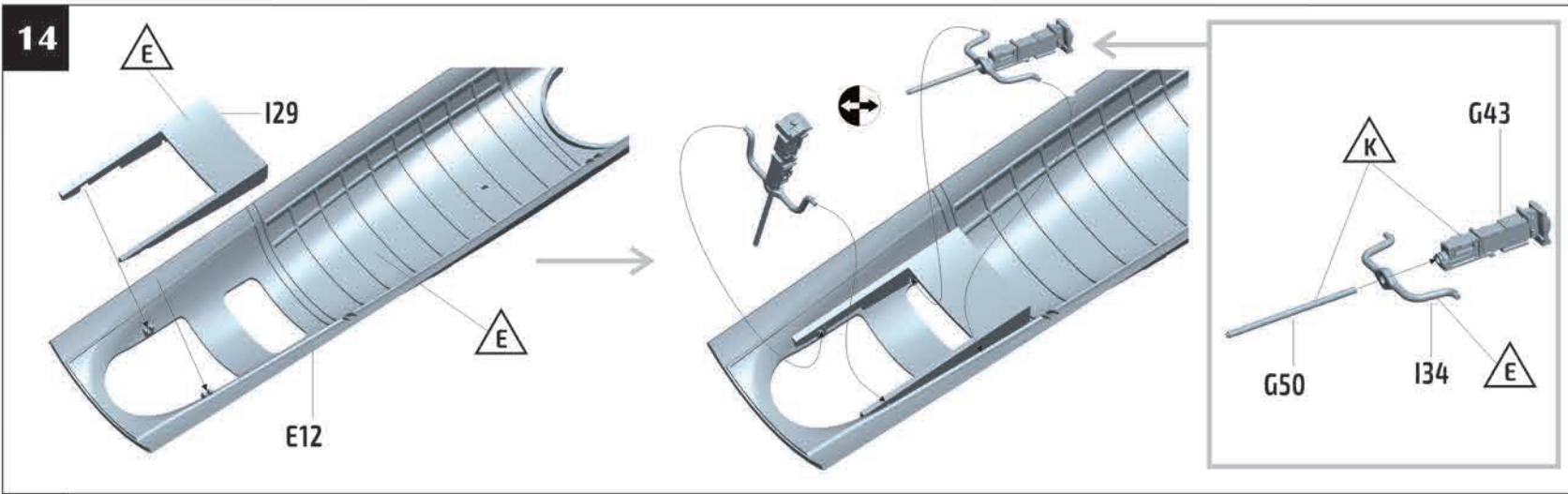


12

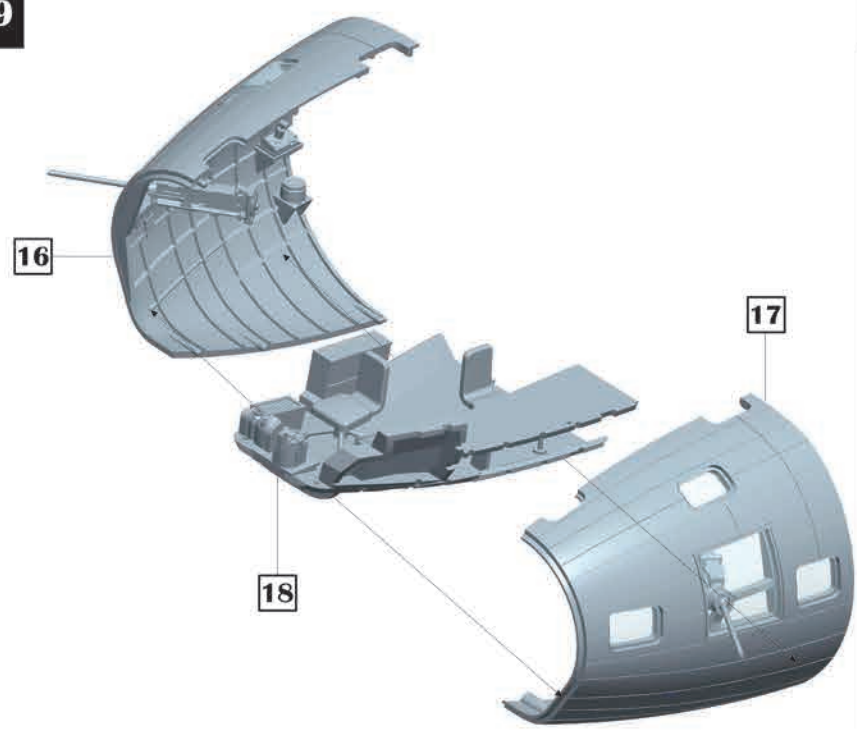


13

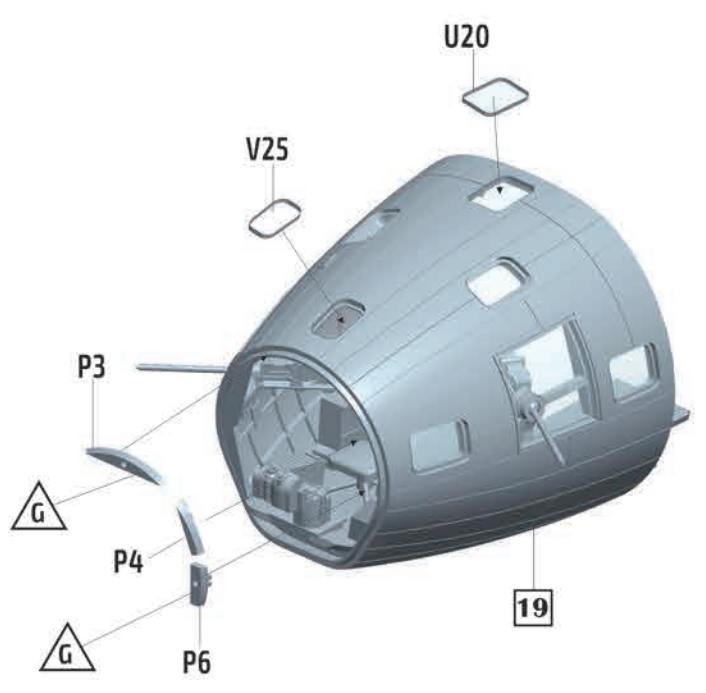




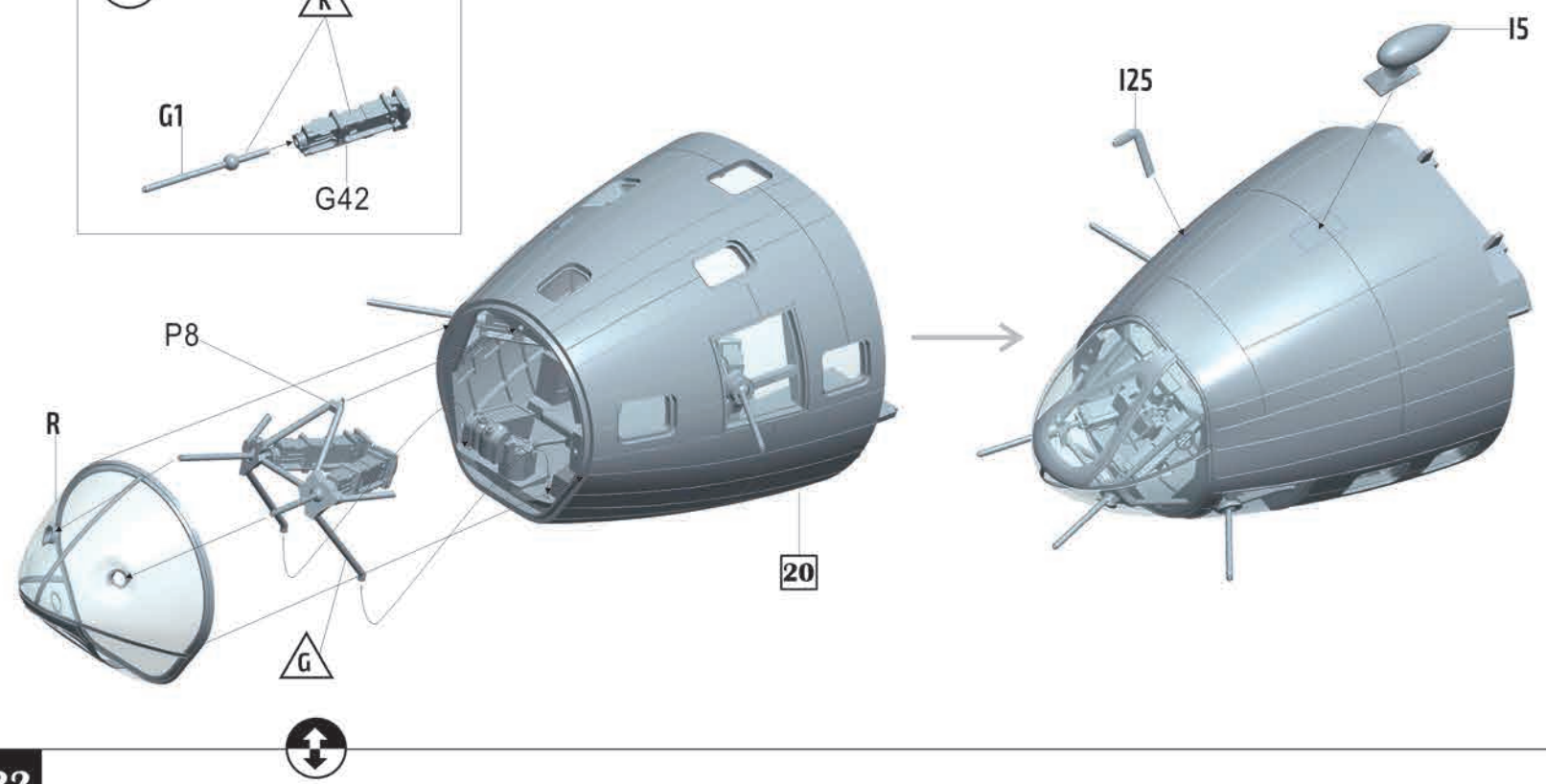
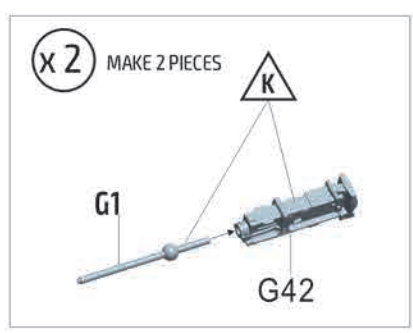
19



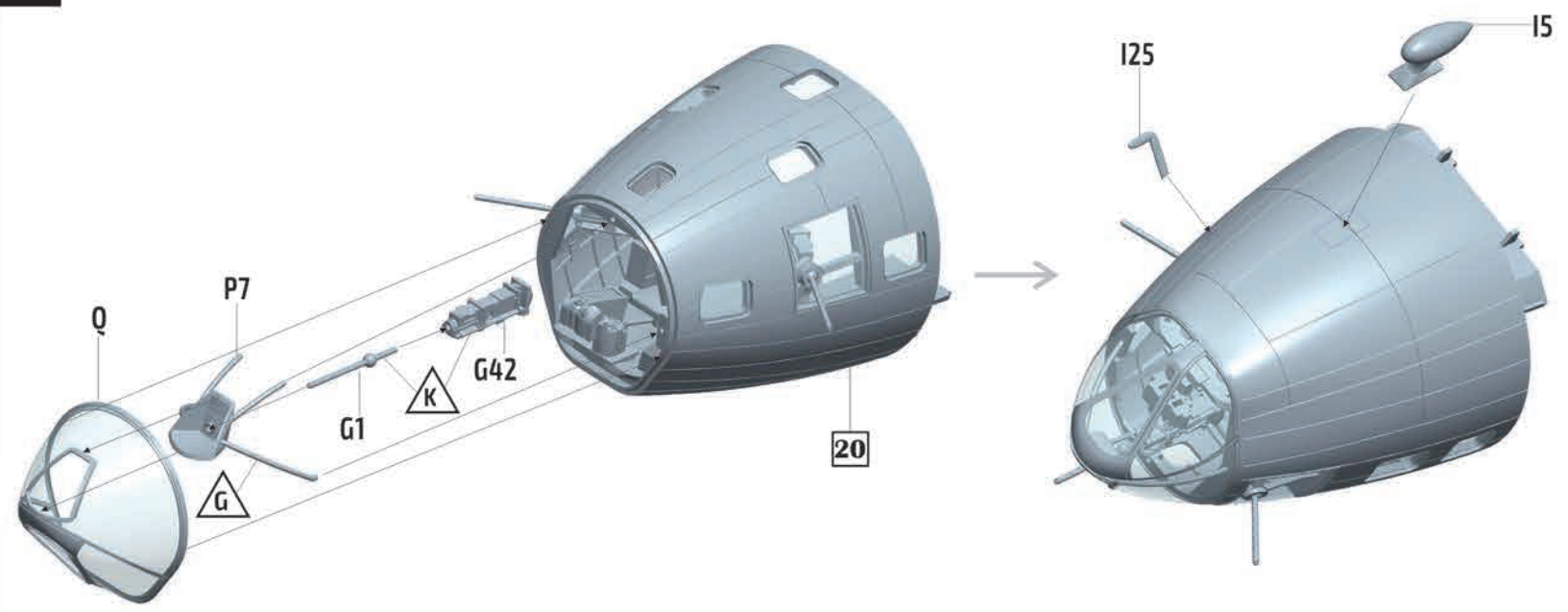
20



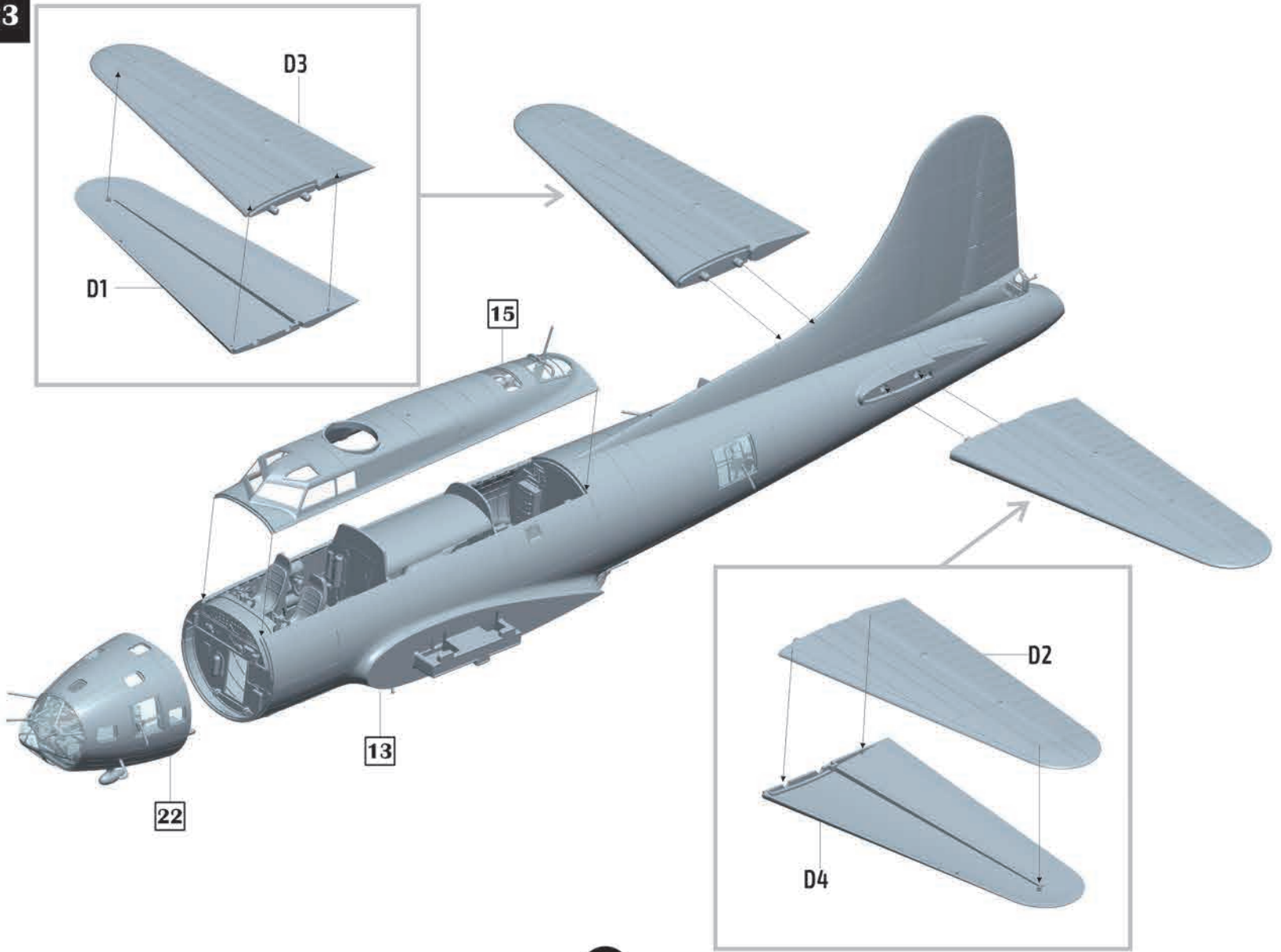
21



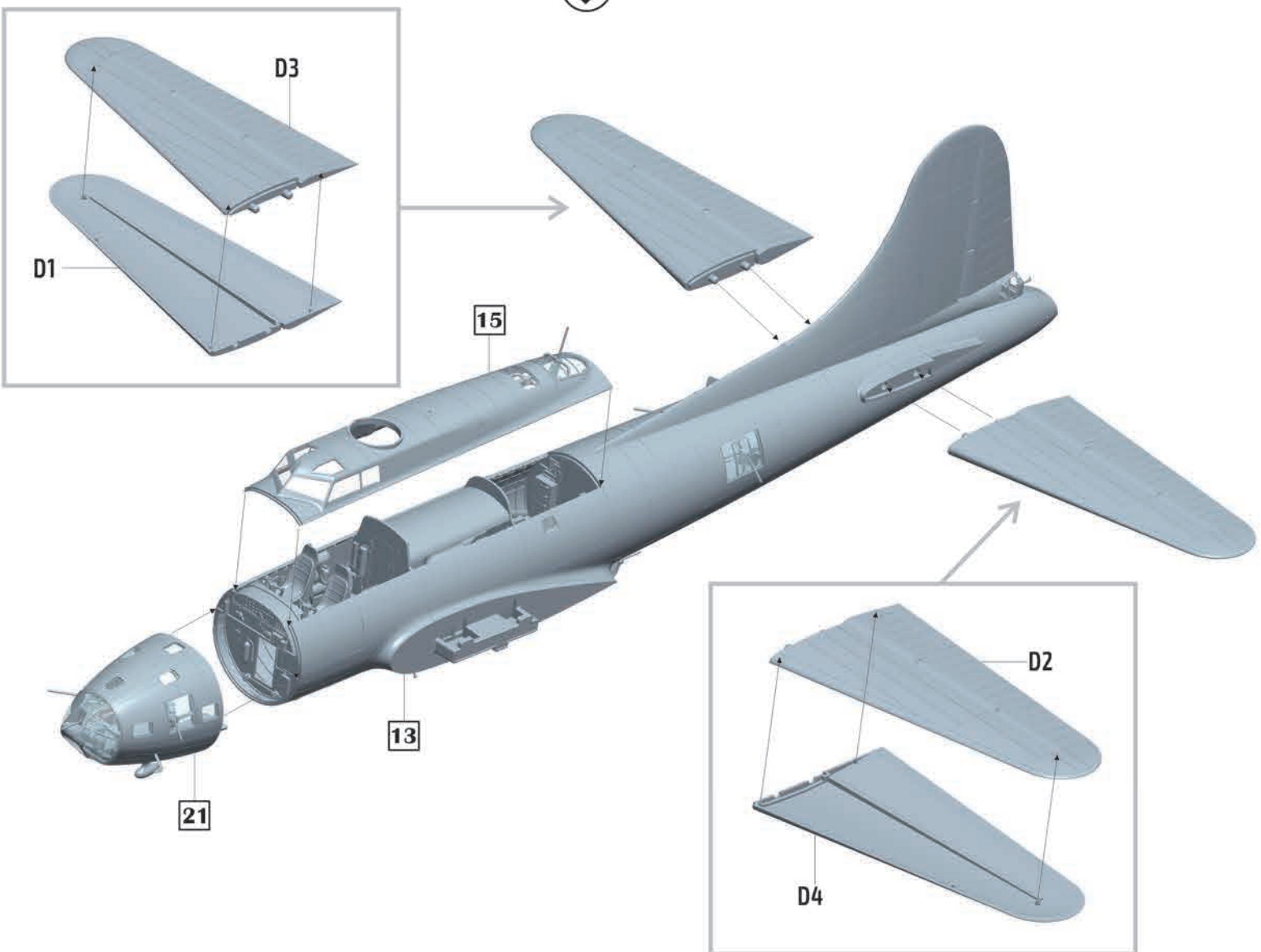
22

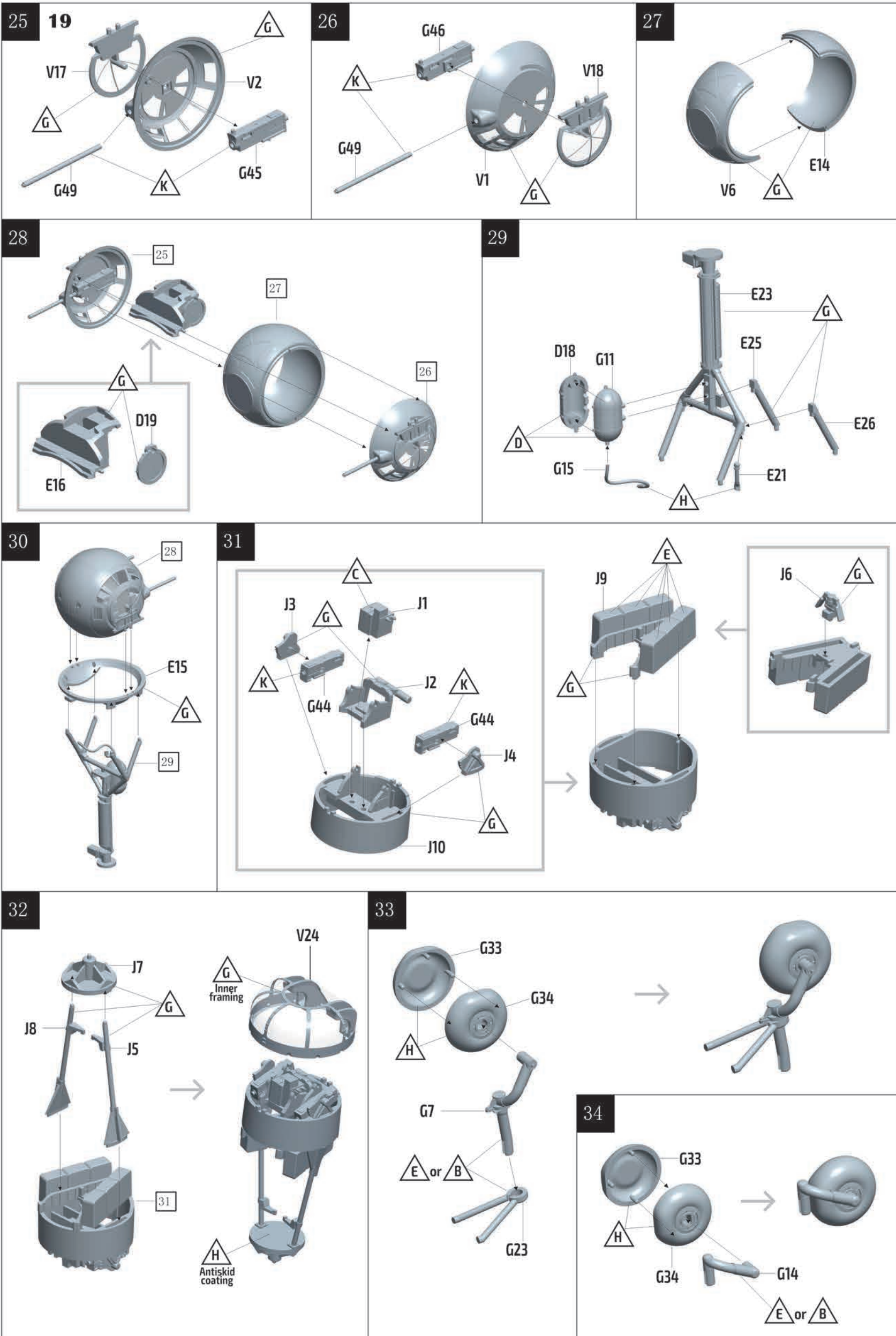


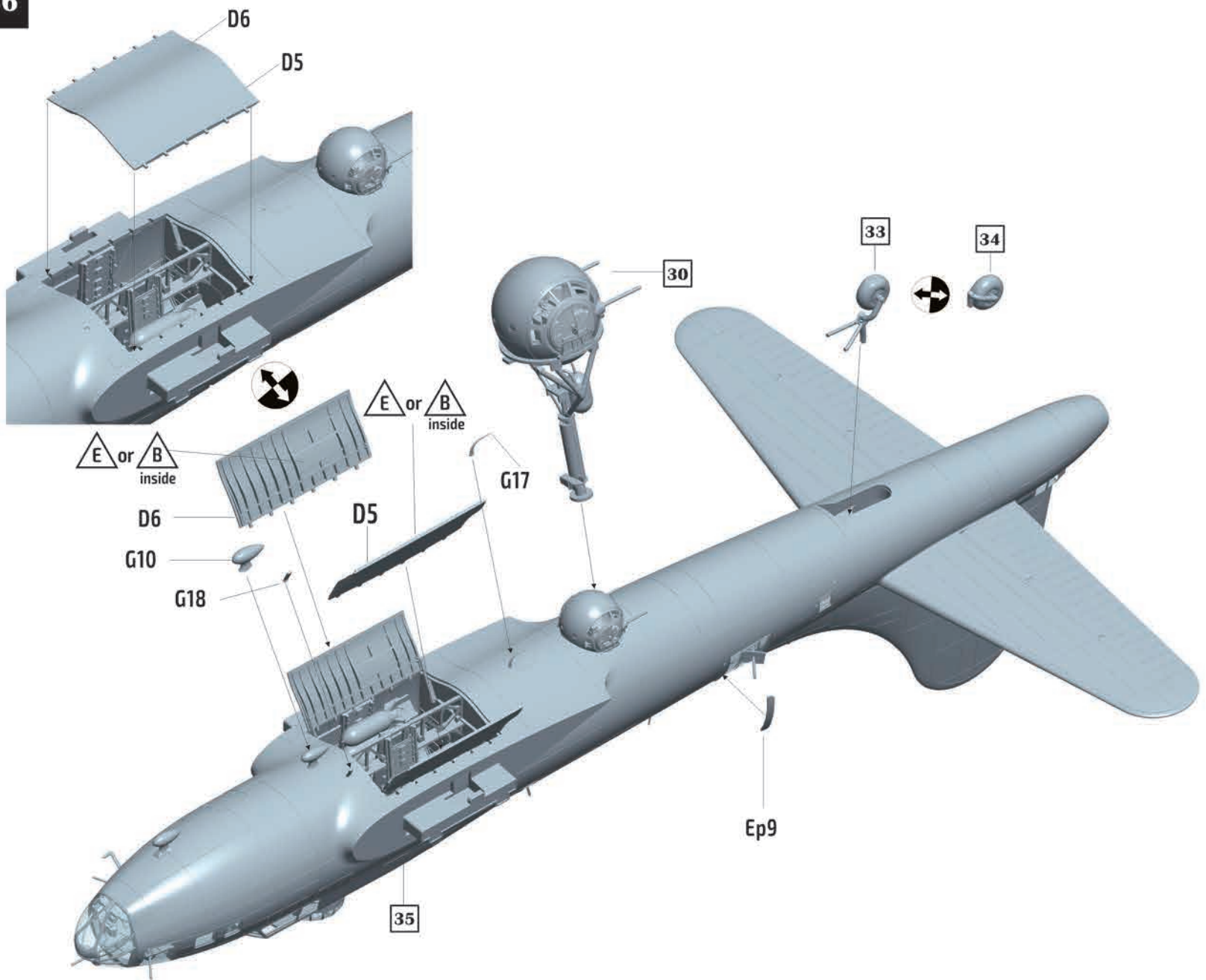
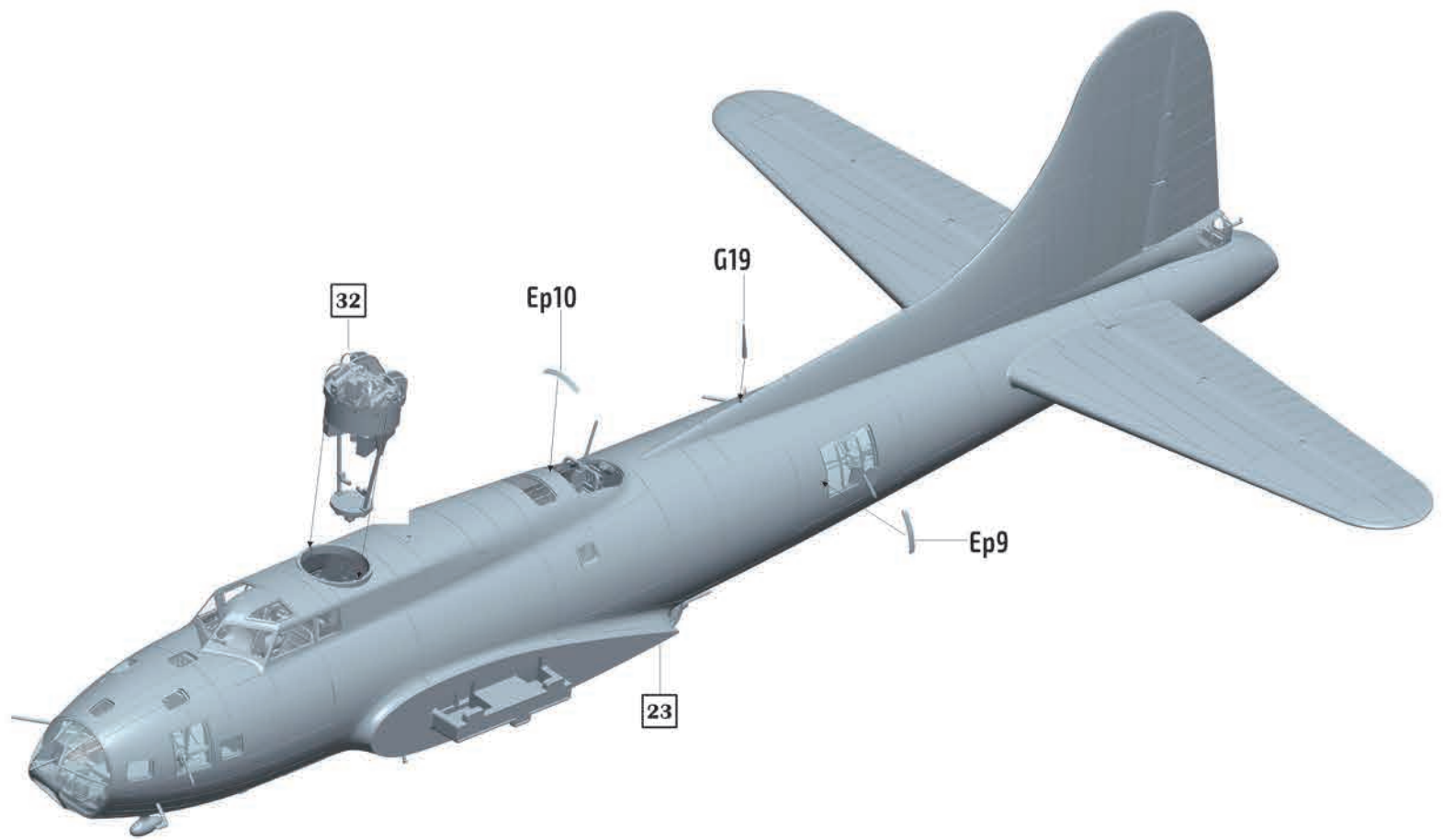
23

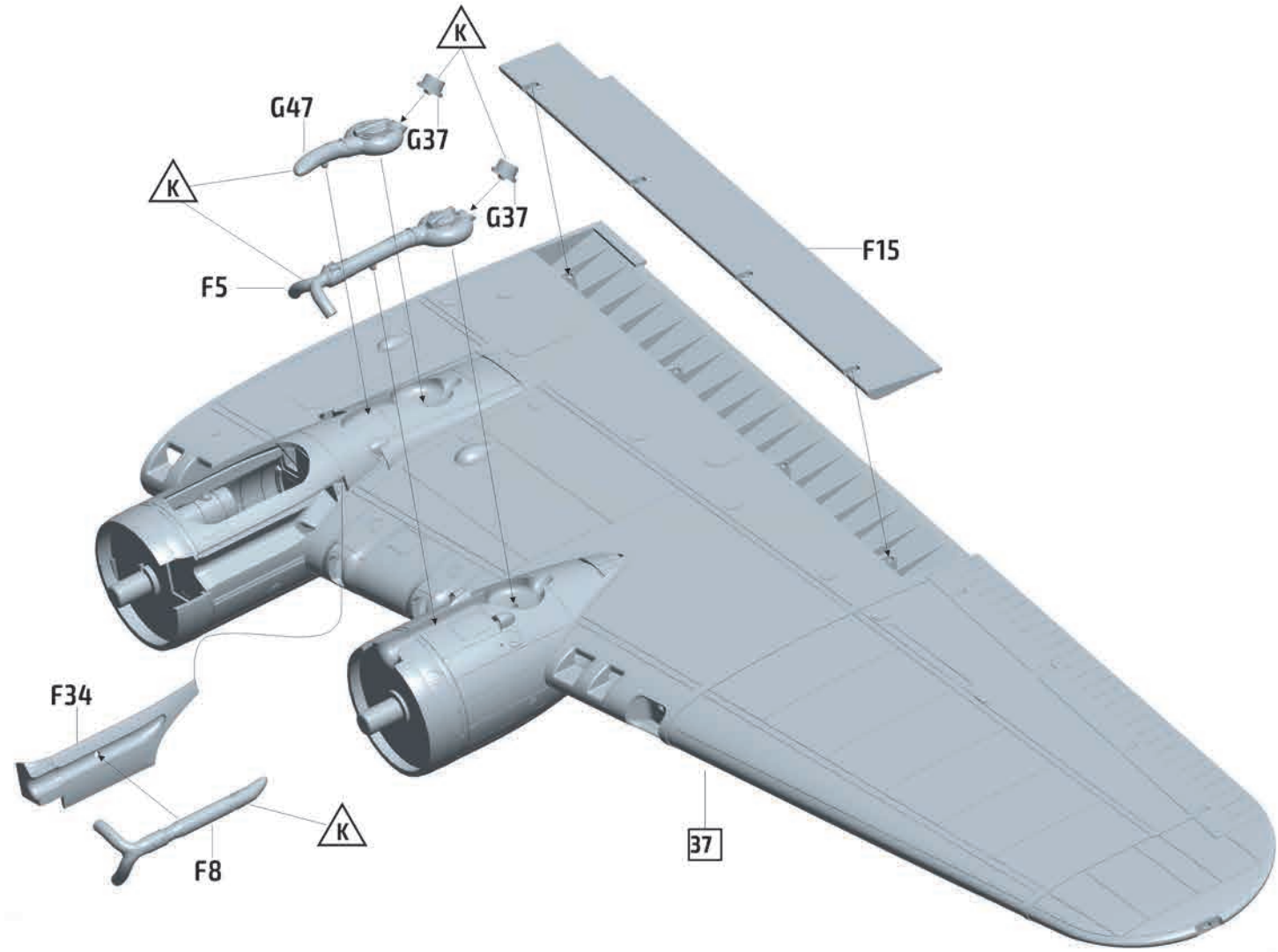
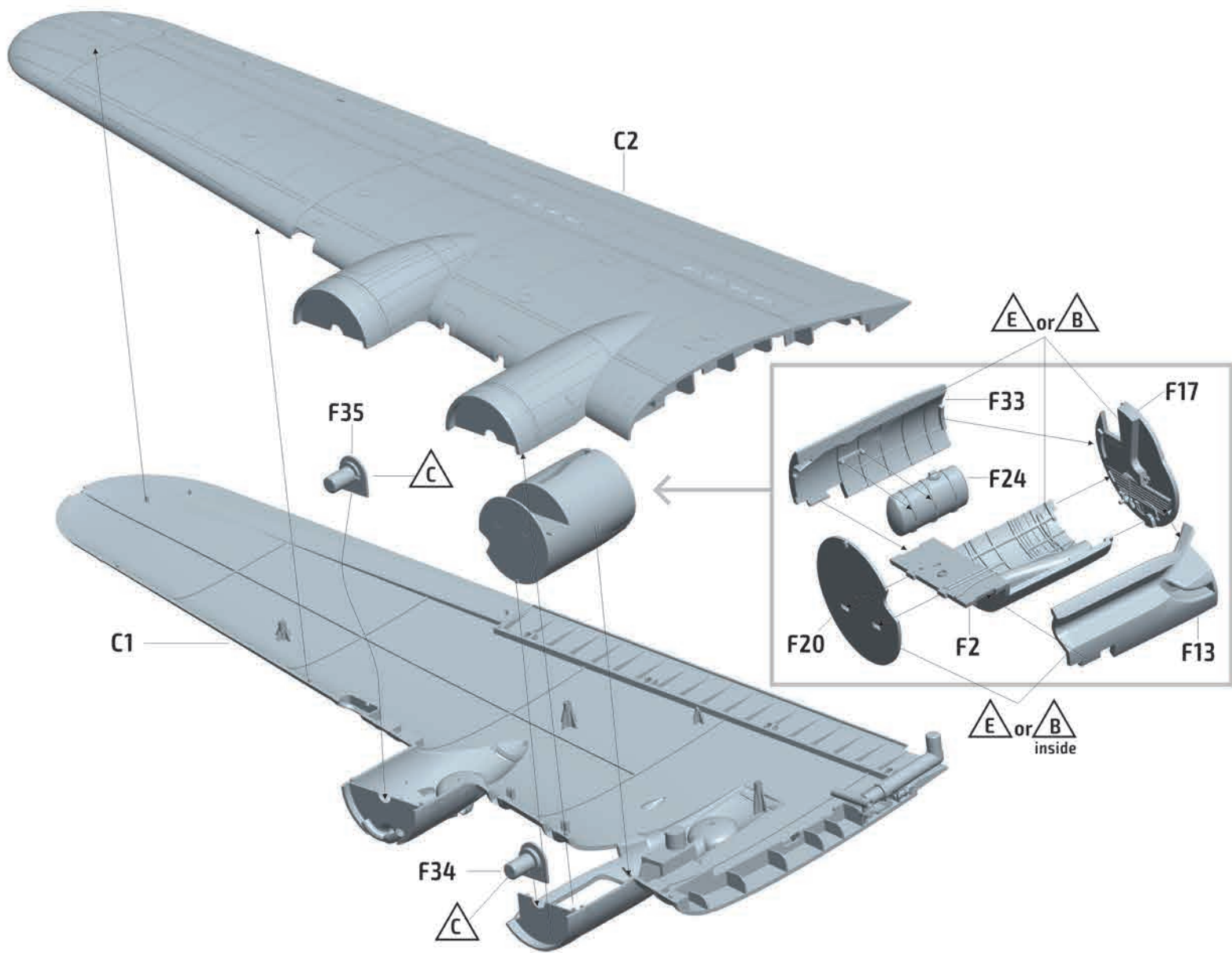


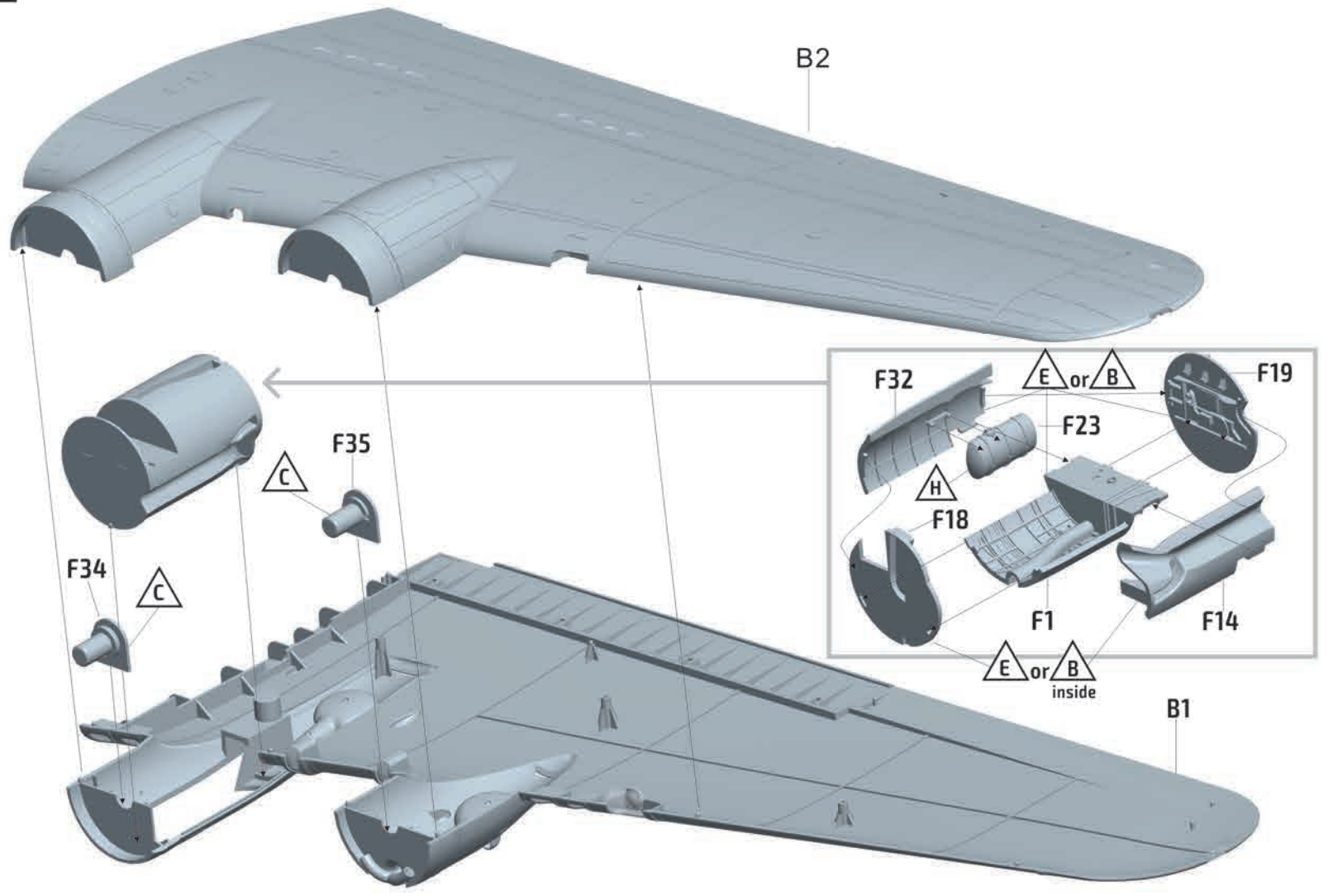
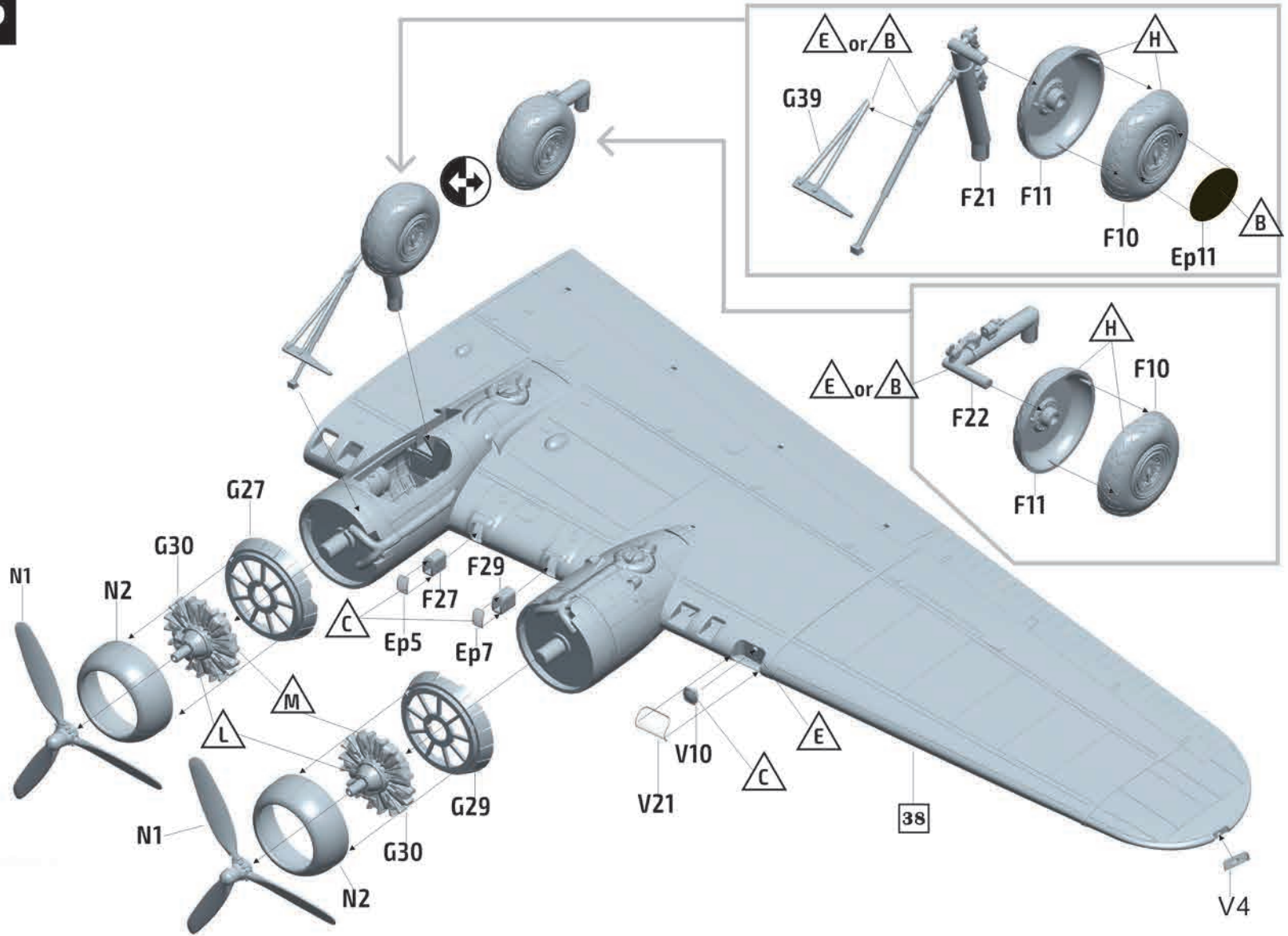
24

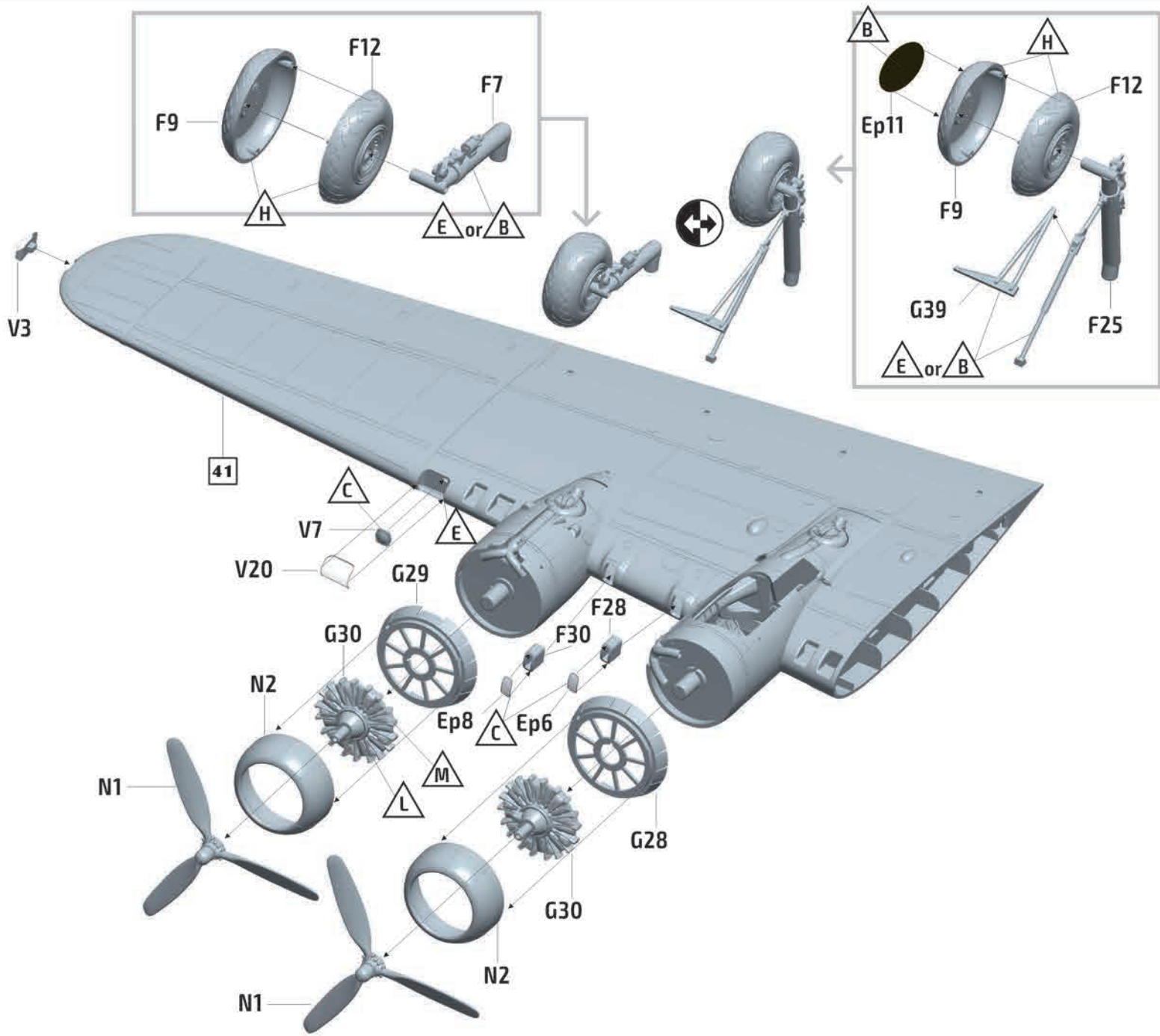
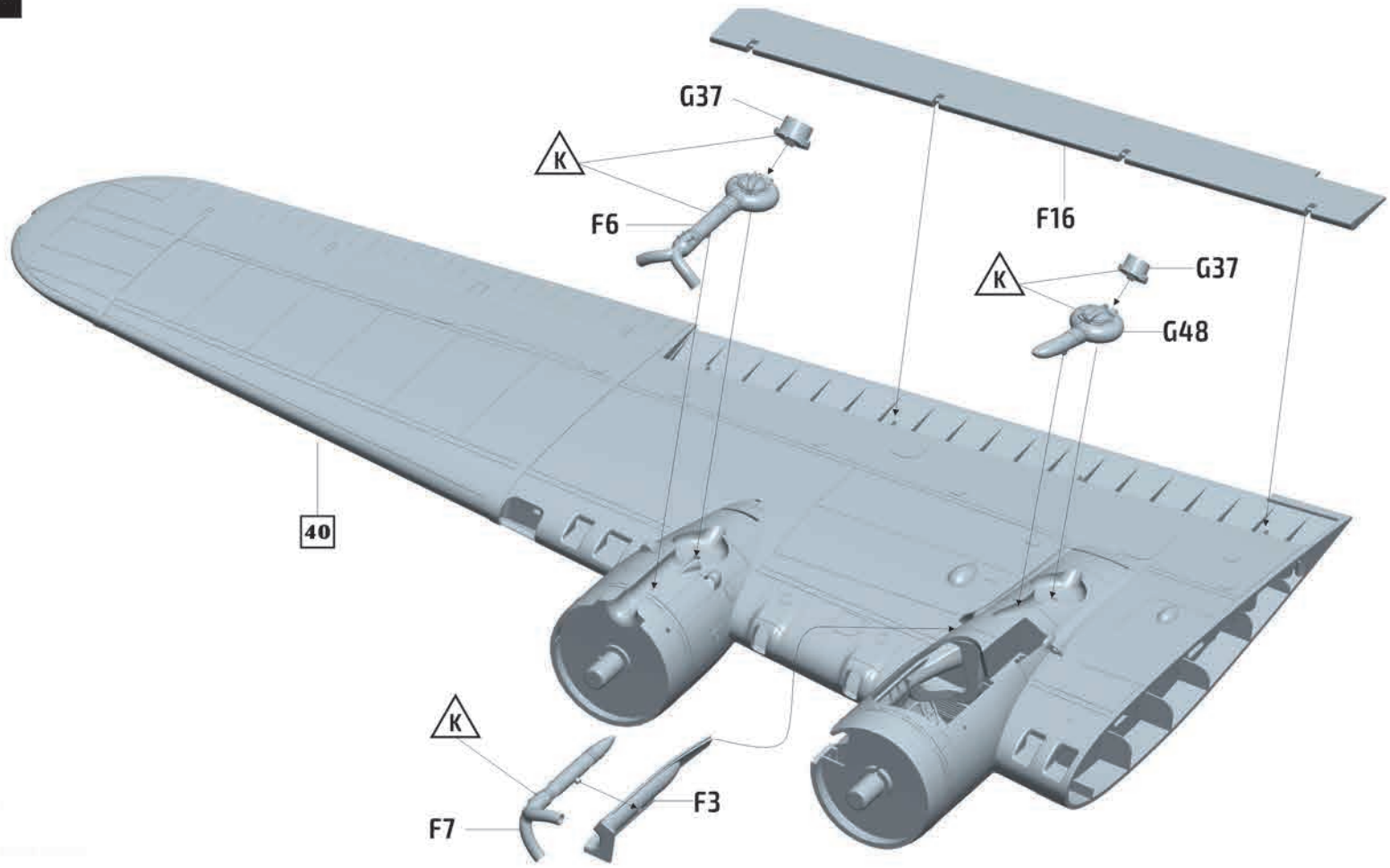


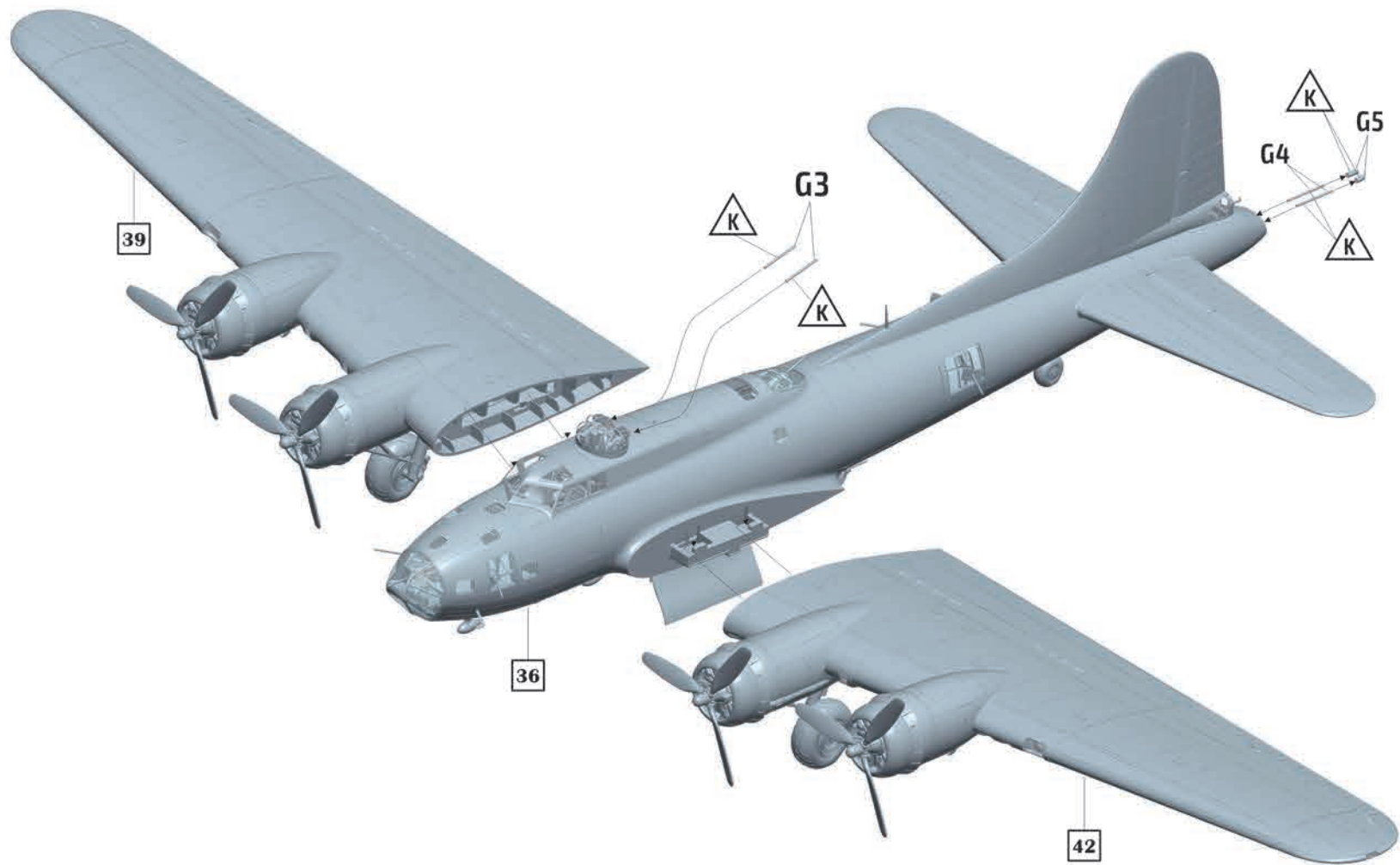




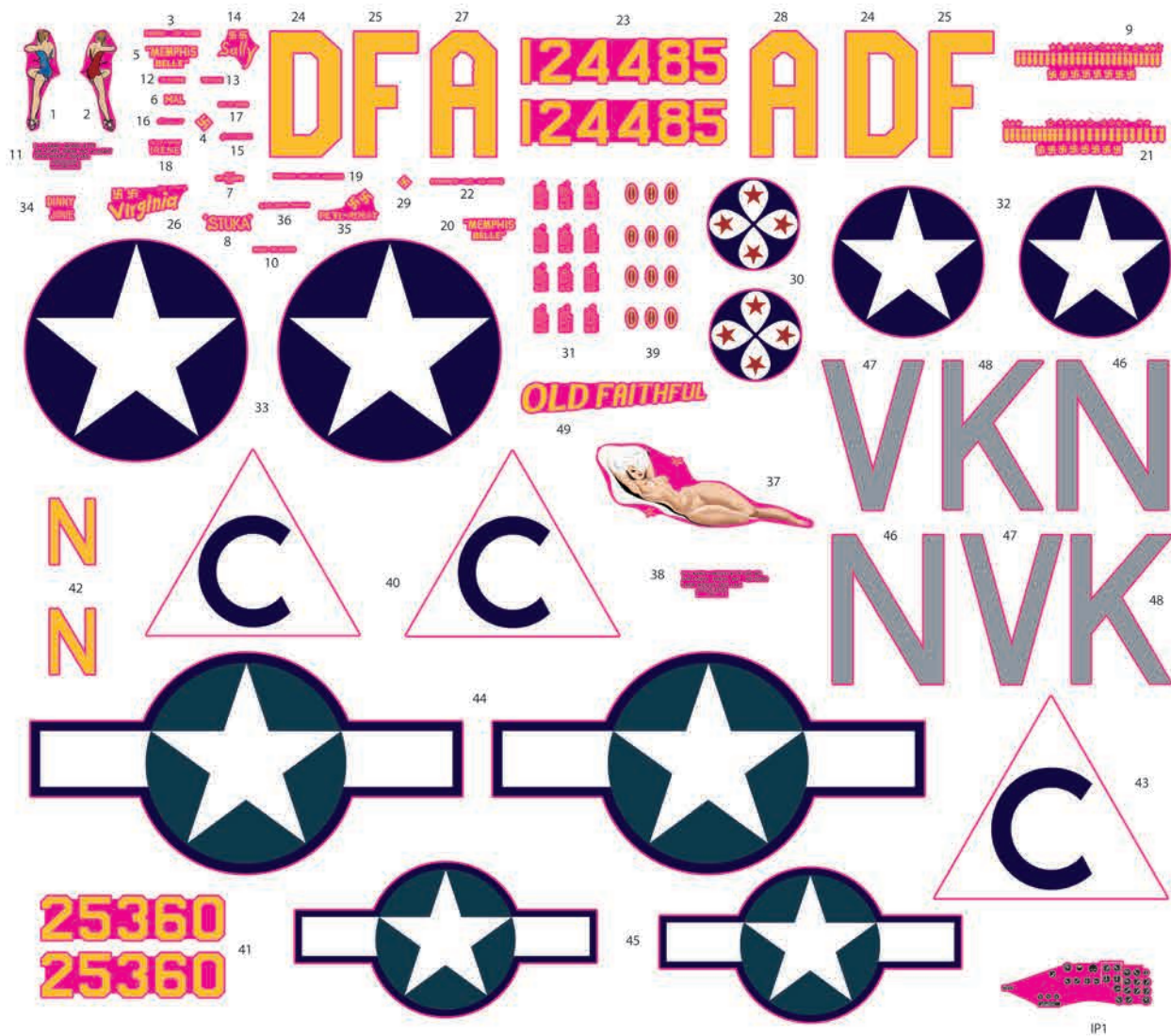




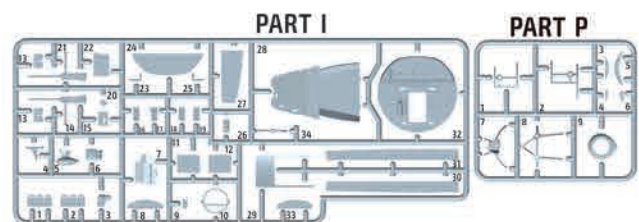
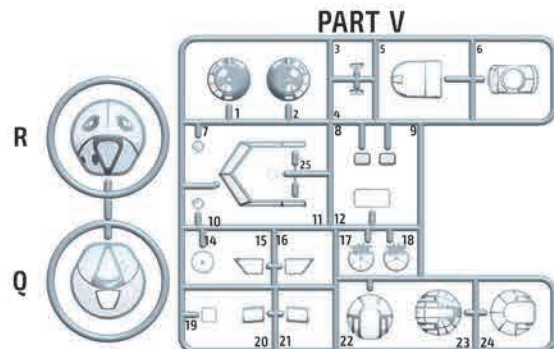
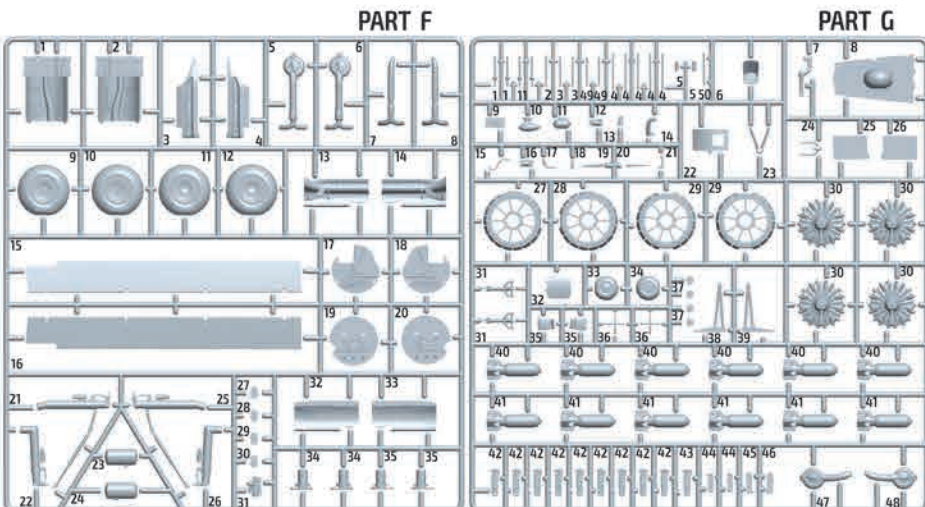
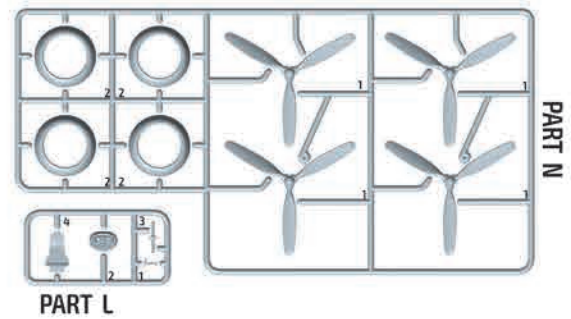
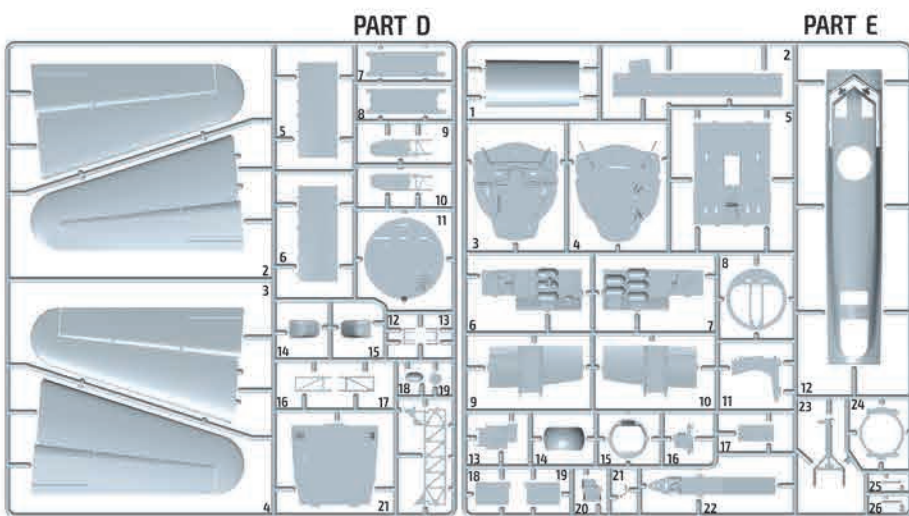
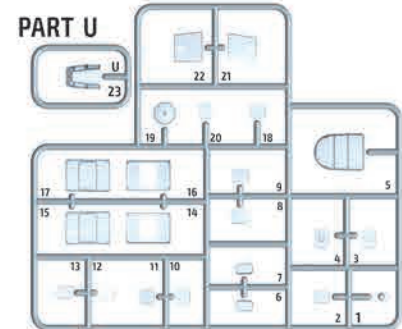
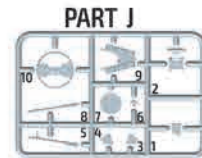
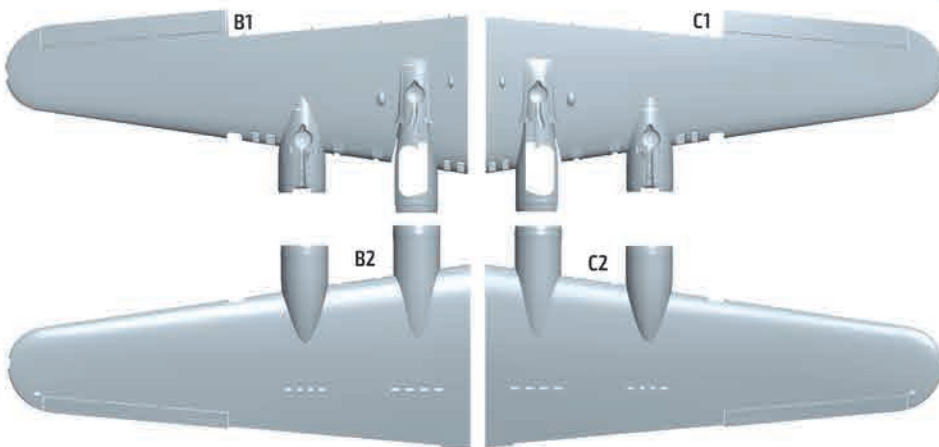
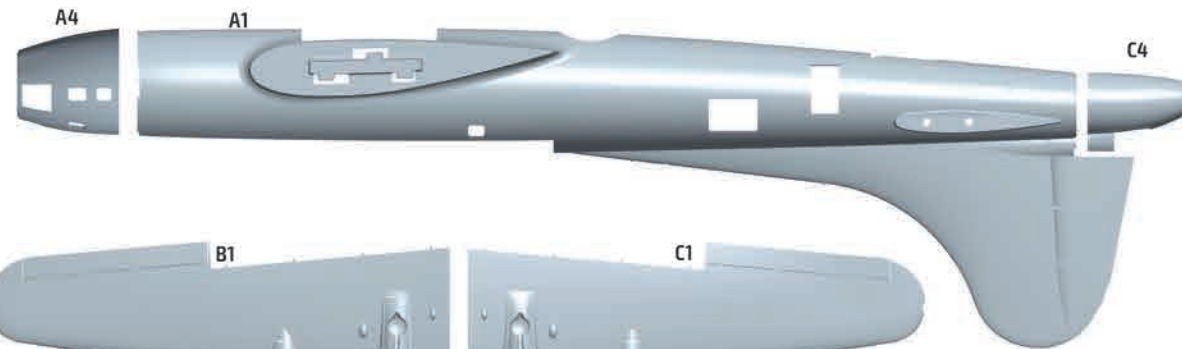
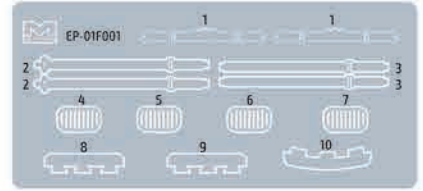
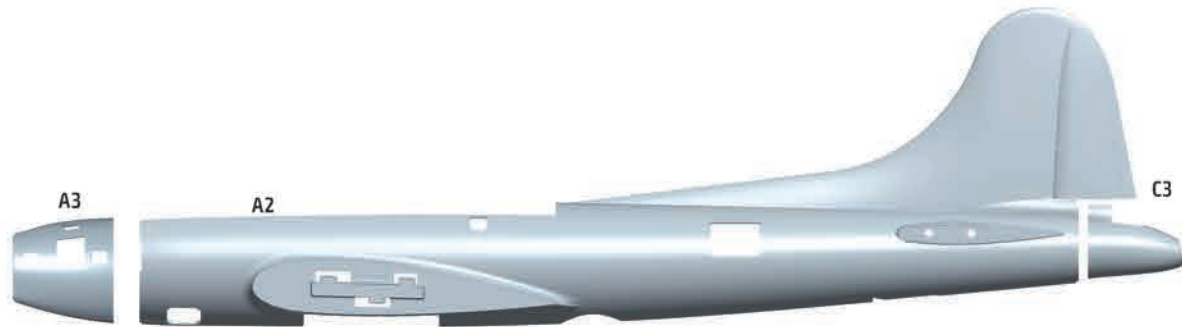




Decals



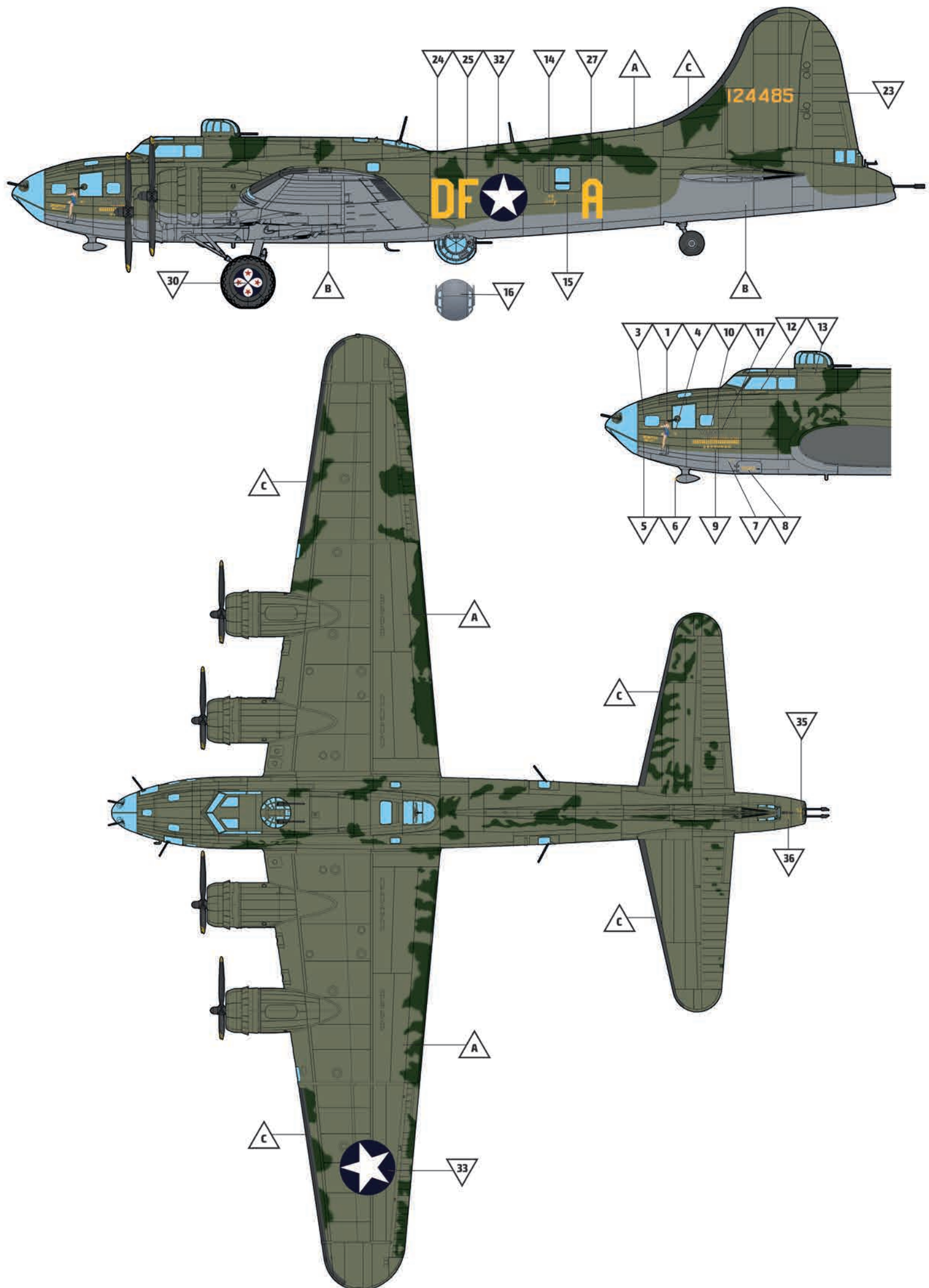
Parts



MARKING

A

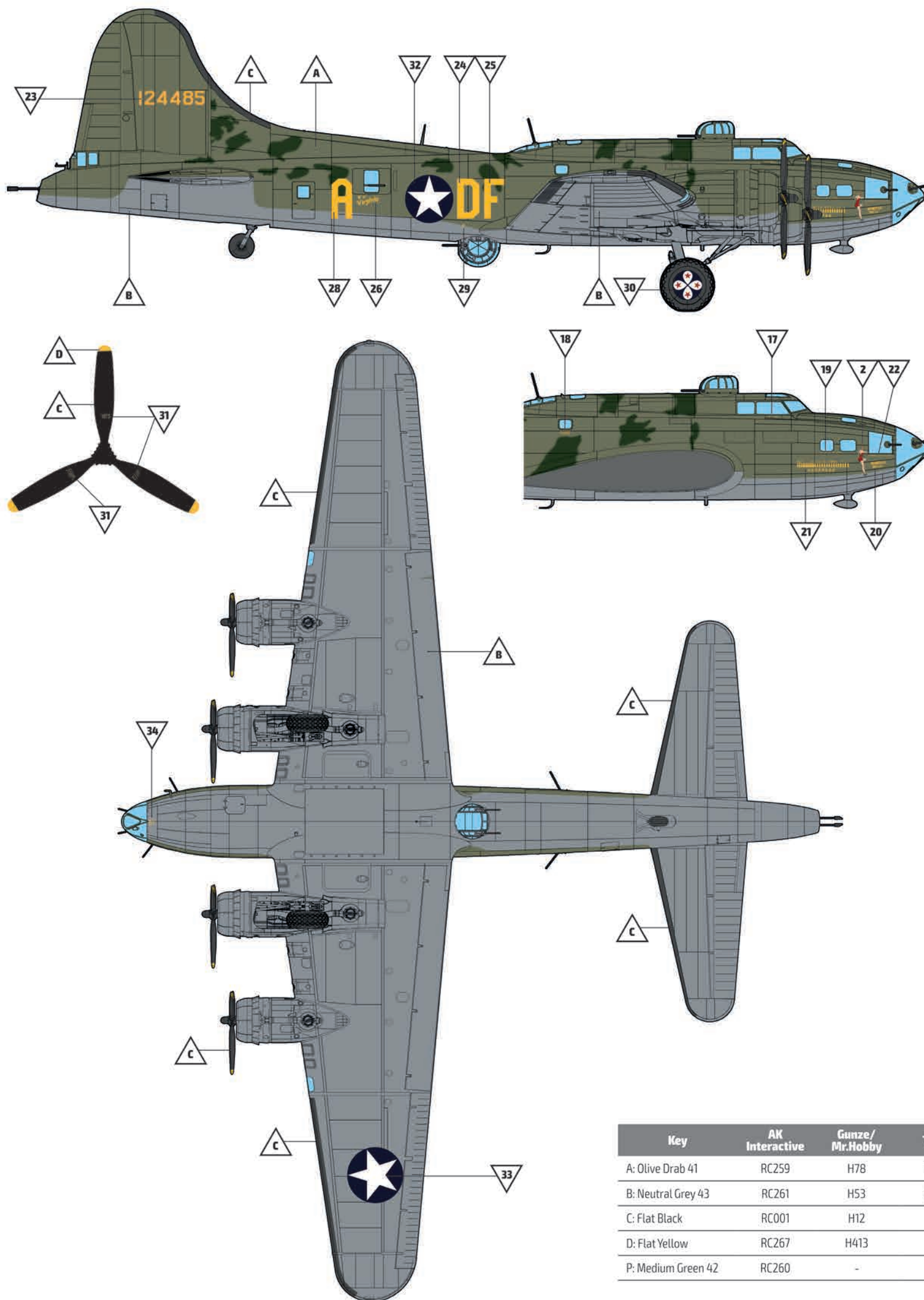
B-17F-10-B0, s/n 41-24485, DF-A, 324th BS / 91st BG, Bassingbourn, UK, May 1943



MARKING

A

B-17F-10-B0, s/n 41-24485, DF-A, 324th BS / 91st BG, Bassingbourn, UK, May 1943

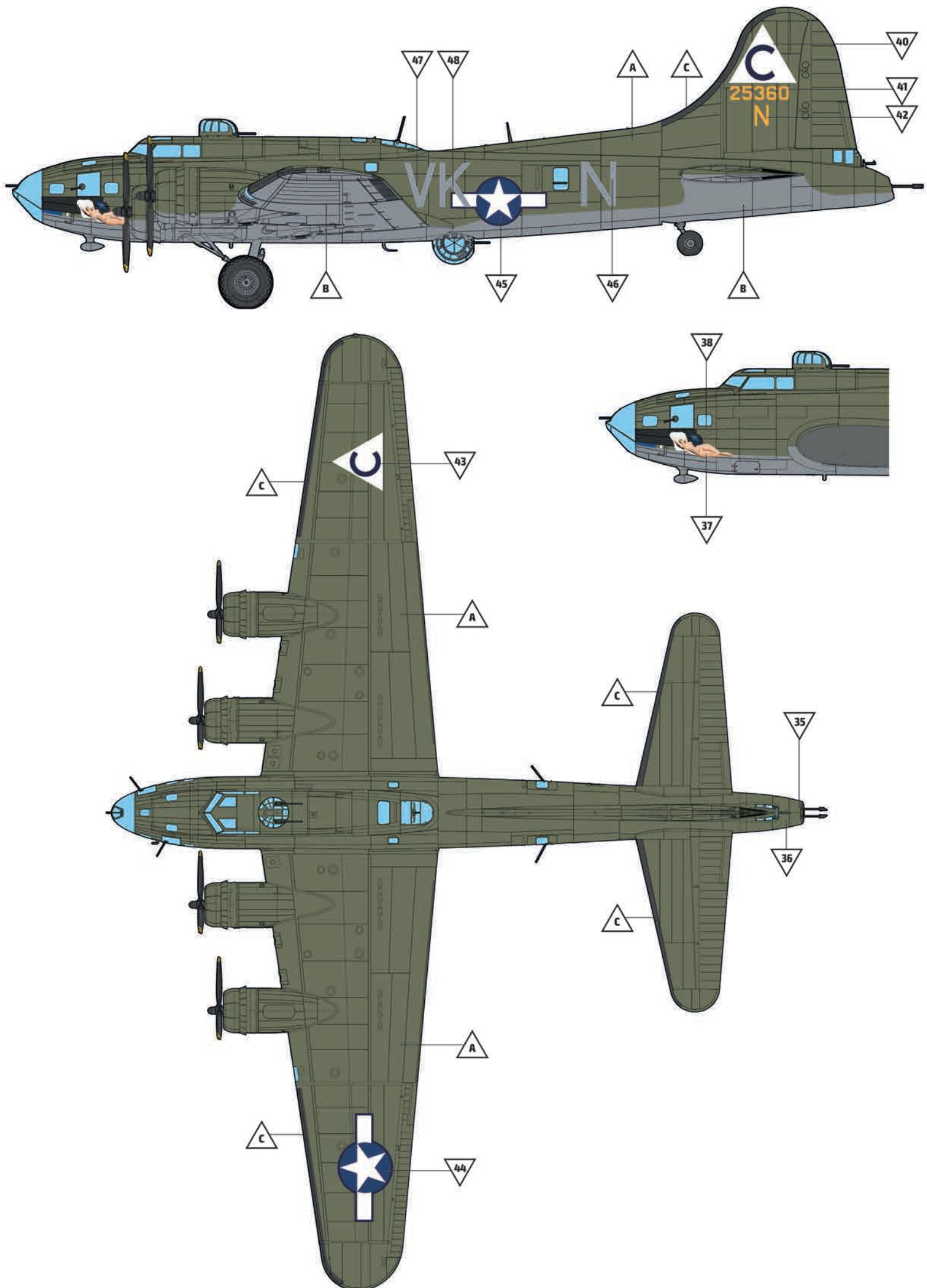


Key	AK Interactive	Gunze/Mr.Hobby	Tamiya
A: Olive Drab 41	RC259	H78	XF-62
B: Neutral Grey 43	RC261	H53	XF-53
C: Flat Black	RC001	H12	XF-1
D: Flat Yellow	RC267	H413	XF-3
P: Medium Green 42	RC260	-	-

MARKING

B

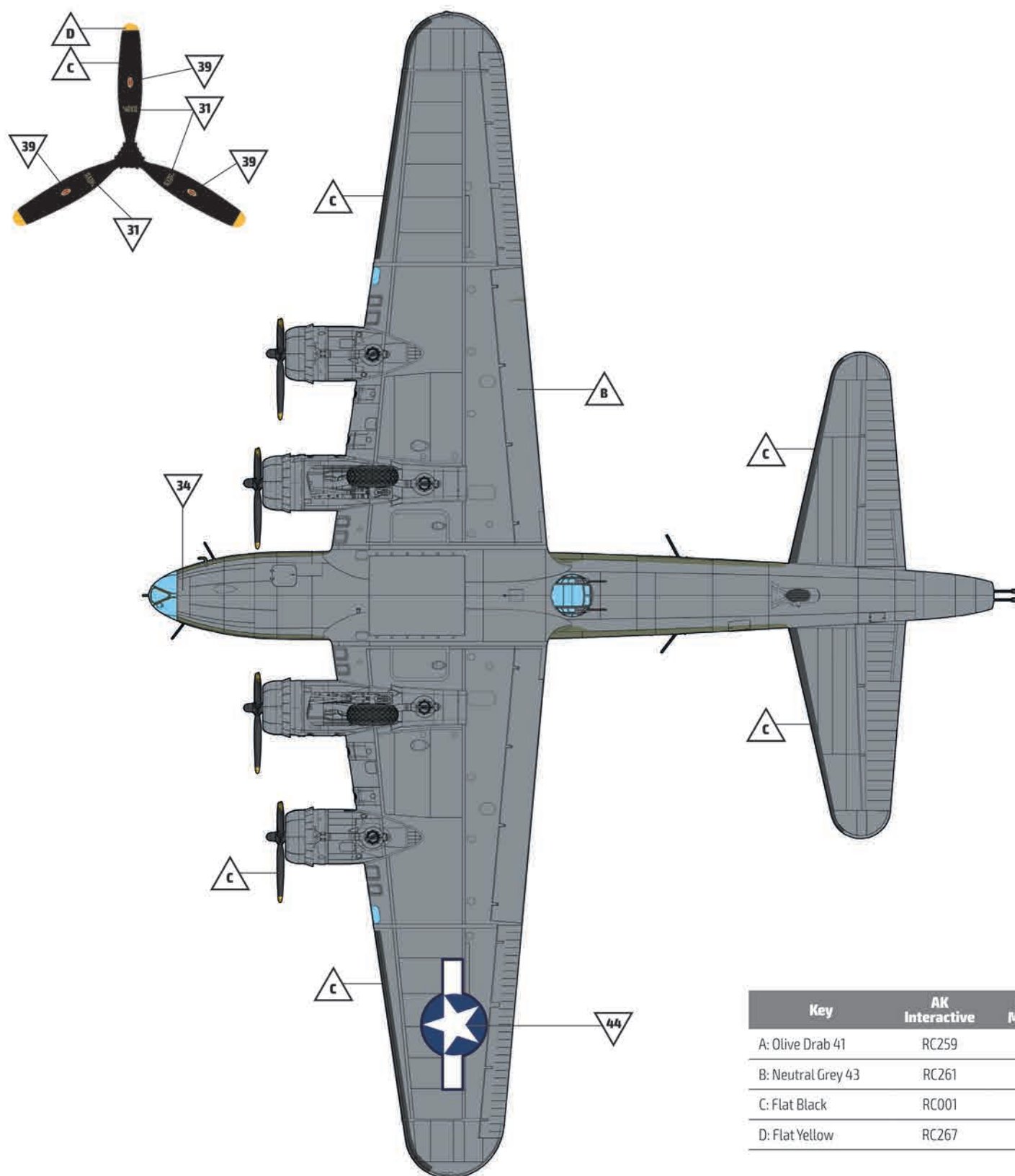
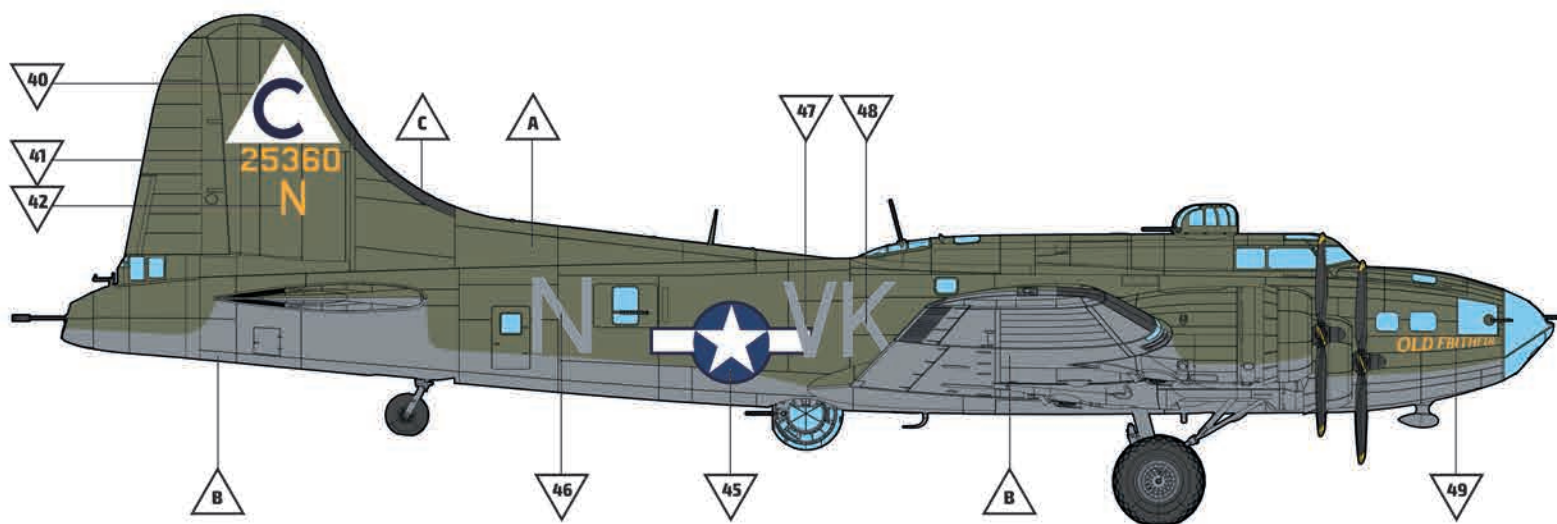
B-17F-50-B0, s/n 42-5360, VK-N, 358th BS / 303rd BG, Molesworth, UK, late 1943



MARKING

B

B-17F-50-B0, s/n 42-5360, VK-N, 358th BS / 303rd BG, Molesworth, UK, late 1943



Key	AK Interactive	Gunze/Mr.Hobby	Tamiya
A: Olive Drab 41	RC259	H78	XF-62
B: Neutral Grey 43	RC261	H53	XF-53
C: Flat Black	RC001	H12	XF-1
D: Flat Yellow	RC267	H413	XF-3

Colour Guide		Decals	
Key	AK Interactive	Tamiya	Gunze/Mr.Hobby
A: Olive Drab 41	RC259	XF-62	H78
B: Neutral Grey 43	RC261	XF-53	H53
C: Flat Black	RC001	XF-1	H12
D: Flat Yellow	RC267	XF-3H413	C364
E: Aluminium	AK479	XF-16	MC218
F: Silver	RC230	XF-26	H8
G: Dull Dark Green	RC230	XF-26	H302
H: Rubber Black	RC022	XF-85	H77
I: Light Wood	AK779	XF-78	79
J: Brass	AK475 / AK4002	X-12	MC219
K: Gunmetal	AK483 / AK798	XF-10	MC214
L: Grey	RC296	XF-77	H331
M: Steel	AK476	XF-56	H18
N: Clear Green	RC505	X-25	H94
O: Clear Red	RC503	X-27	H90

In cooperation with:



www.ak-interactive.com



Large Scale Modeller

www.largescalemodeller.com

General kit help/reference: **Large Scale Modeller**
 Illustration, manual layout and format: **HK Models & AK-Interactive**
 Manual and assistance: **AK-Interactive**
 Introductory text: **Cees Broere**